

*15 September – 29 October*

1989  
Whitechapel  
Open

East End  
Open  
Studios



# 1989 Whitechapel Open

Sponsored by Unilever 

# East End Open Studios

 London Docklands  
Supported by **GRANADA GROUP PLC**

WHITECHAPEL

## Foreword

The 1989 catalogue is the most ambitious in the history of the Whitechapel's one hundred year tradition of exhibitions of work by artists situated in East London. Its expansion derives from the fact that it now has to perform two functions: to record the selection for the Open exhibition, 151 works in total, and to give basic information on some 600 artists working in studios in neighbouring boroughs who have chosen to open to the public on successive weekends between 15 September and 29 October. In a way, both events highlight the everyday exchanges between artists and the local communities to whom they belong. Many of these are informal. Others, however, come about through the Whitechapel itself since the Gallery enthusiastically assumes a role within the professional side of this interaction. For example, not only are local artists already part of our audience, but every year several spend an extended period as artists-in-residence in nearby schools or hospitals. Within the Gallery they act as intermediaries, sharing their knowledge and experience of making art with the public in talks, workshops and school classes. This publication signals their existence and will perhaps serve as the first volume of an even more lively and comprehensive register of artists working in East London which is being considered for the future.

The Open, which once again has been generously sponsored by Unilever, is intended to represent the spectrum of paintings, sculpture, photography, ceramics and drawings made by both professional and amateur artists. Its variety is a bonus and when Jenni Lomax and I judged it this year from actual works (or slides for three-dimensional entries) we discovered the final list comprised a show especially accessible to young, unknown or neglected artists, as well as to those who strongly identify with the area, and their peers. The desire to include as much work as possible, juxtaposed in a relatively open space, means it is impossible to take in large installations or performance or anything with sound or needing seating.

Nevertheless the formula isn't a fixed one and the Gallery would rather be committed to developing a wide and critical picture of what is emerging in British art than in creating a predictable annual event or academy.

For the second time in the history of the Open, a number of awards have been made to those artists who, in the opinion of an independent jury, have submitted works deserving acclaim. This year awards have been generously donated by Conder Group plc for the best sculpture; Coopers & Lybrand for the best work submitted by a painter under the age of 35; Save & Prosper Group for the best painting; and Unilever for the most outstanding work in any medium. This year's jury comprised Bryan Biggs, Director of the Bluecoat Gallery in Liverpool, Julia Ernst, Curator of the Saatchi Collection in London, and Janet Ludlow, Councillor in the London Borough of Tower Hamlets and an artist in her own right.

One of the best places to judge artists as a metropolitan asset is by visiting studios. Surrounded by work, tools and inspirational postcards and books, visitors are engaged by the imaginative spirit of artists as individuals and communicators. Many thousands of artists have moved into the East End over the past 20 years in an attempt to find affordable spaces in which to work. Unfortunately, the type of warehouse spaces required are becoming less and less available as property prices rise and artists, and the organisations which exist to help them like SPACE and ACME, find rents too high to be manageable on low incomes. On the other hand, opportunities for new audiences and commissions arise with redevelopment, and works are frequently sold during periods when studios are open to the public.

Because of the financial support of Granada Group plc, the Whitechapel and Open Studios co-ordinator (a new freelance post) could liaise with representatives of the studios, taking account of what artists wanted, and plan a much more ambitious and well-publicised event.

Debbie Duffin, this year's co-ordinator, compiled a compendium of illustrations, curricula vitae and statements for each person which is available at the Gallery for those wishing to plan visits. With the assistance of London Docklands Development Corporation we have been able to summarise this information in the catalogue, thereby making it accessible to a far greater audience. It is fitting that the 1989 Whitechapel Open/East End Open Studios directory will have a longer life and be a resource for architects, community groups and companies in Docklands since supporting and enhancing the cultural life of the area is very much part of the LDDC's policy and present work.

The Whitechapel has collaborated with East London Arts which has produced a special edition containing addresses, opening times and a map (available from the Gallery's information desk). The free buses setting forth on most Sundays from the Whitechapel during the course of the Open will make it easier to reach the studios. They have been generously provided by MoMart Ltd, the company in the East End which offers transport, warehousing and services for galleries and collectors worldwide. The Whitechapel has also arranged family day workshops, visits by fifth and sixth form students to studios, and events in the Gallery.

One section of the Whitechapel Open, *Artists in East London Schools*, located in the New Gallery, is a changing selection of work from schools projects organised by the Gallery over the past twelve months. This show complements the publication of the book *Artists & Schools* which documents the Whitechapel's schools programme during its pioneering first decade.

Catherine Lampert  
*Director, Whitechapel Art Gallery*



# 1989 Whitechapel Open

The exhibition of new art in East London

The Whitechapel is pleased to assist visitors interested in buying work from the exhibition or in finding out any further information about the artists. Please ask at the Information Desk

# Catalogue of Exhibition

Upper and Lower  
Galleries

## **Cheryl Aaron**

*The Coal Stokers, Scene from the Hairy Ape III* 1989  
Etching and aquatint on paper (edition of 50), 59.7 × 74.9  
Price: £98 (unframed £78)

## **Jananne Al-ani** (b. 1966)

*Untitled* 1989  
Colour photograph (edition of 4), 62 × 64  
Price: £350 (unframed £300)

## **Tim Allen** (b. 1950)

*Burning Blue (for G.P. and D.S.)* 1988  
Oil on canvas, 213.4 × 152.4  
Price: £3,200

## **Saleem Arif** (b. 1949)

*World of Secrets* 1988  
Acrylic and sand on muslin and paper, 211 × 219.5  
Price: £2,300

## **Geoffrey Bennett** (b. 1945)

*Turkish Children's Train and Tourist* 1989  
Oil on canvas, 105 × 140  
Price: £800

## **Laetitia Bermejo** (b. 1959)

*Self Painting Portrait* 1988  
Oil on canvas, 99 × 51  
Price: £440

## **Zarina Bhimji** (b. 1963)

*Untitled* 1989  
Polaroid photograph (edition of 3), 80 × 60  
Price: £600

## **Vivien Blackett** (b. 1955)

*Swarm* 1989  
Oil on canvas, 183 × 152.5  
Price: £1,100

## **George Blacklock** (b. 1952)

*A Merry Dance* 1989  
Oil and wax on canvas, 203 × 254  
Price: £1,200

## **Frank Bowling** (b. 1936)

*Sacha Jason Guyana Dreams* 1989  
Acrylic on canvas, 177.8 × 141.6  
Price: £5,500

## **Louisa Buck** (b. 1966)

*Untitled* 1989  
Cement fondue with bronze patina, 99 × 31 × 28  
Price: £750

## **Simon Callery** (b. 1960)

*Limehouse Basin at Night* 1989  
Oil on canvas, 114 × 153  
Not for sale

## **Paul Caro** (b. 1958)

*Meteor* 1989  
Acrylic on canvas with deck-chair canvas, 196 × 168  
Price: £1,000

## **Louise Cattrell** (b. 1957)

*Tableau* 1989  
Oil on canvas, 136 × 168  
Price: £1,000

## **Brian Chalkley**

*Flower for a Day* 1989  
Wood, steel plate, etched copper, acid and oil, 200 × 260  
Price: £4,000

## **Edward Chell** (b. 1958)

*Jarrow Steel* 1989  
Charcoal on paper, 157 × 187  
Price on application

## **Maria Chevska** (b. 1948)

*Rival* 1989  
Oil and encaustic on linen and canvas, 63.5 × 119  
Price: £2,500

## **Isabel Chidell** (b. 1917)

*Rice Fields Vietnam* 1989  
Oil on canvas, 13.7 × 16.3  
Price: £75

## **Christopher Christophorou**

(b. 1957)  
*Immigrant* 1989  
Oil on canvas, 164 × 253  
Price: £1,200

## **Jocelyn Clarke** (b. 1958)

*Portrait* 1989  
Oil on canvas, 85 × 36 × 59  
Price: £650

## **Phillippa Clayden** (b. 1955)

*Sleeper* 1988  
Oil and collage on army quilt, 150 × 225  
Price: £4,000

## **Nicholas Cobb** (b. 1957)

*Untitled* 1989  
Acrylic on canvas, 160 × 237  
Price: £1,600

## **Mary Cossey** (b. 1932)

*Dog Walkers* 1989  
Oil on canvas, 50 × 61  
Price: £250

## **Lilian Creamer**

*Donegal Farmhouse*  
Batik, 21 × 30  
Price: £75

## **Mikey Cuddihy** (b. 1952)

*Animal, Vegetable, Me # 1* 1989  
Acrylic and pigment on canvas, 244 × 191  
Price: £1,400

## **Anthony Daley**

*Diana* 1989  
Oil on canvas, 121.9 × 91.4  
Price: £2,000

## **Van Phong Dam** (b. 1953)

*Three Studies after van Gogh* 1989  
Chinese ink on Japanese Paper, 46 × 80  
Price: £230

## **Nina Danino** (b. 1955)

*Interior - Self Portrait* 1989  
Charcoal on paper, 117 × 87  
Price: £800

## **Barbara Davis**

*Untitled* 1988  
Clay, 28 × 39 × 39  
Price: £200

## **Kate Davis** (b. 1960)

*Untitled* 1988  
Sheet steel and piano hinge, 50 × 20 × 35  
Price: £1,700

## **Robin Dawson** (b. 1959)

*Candidasa, Bali* 1989  
Photograph (edition of 10), 53.3 × 43.2  
Price: £85 (unframed £50)



**Durrit Dekk**

*Greek Ladies* 1986  
Oil on canvas, 29 × 37  
Price: £95

**Jeffrey Dellow** (b. 1949)

*Memory and Fire* 1989  
Acrylic on canvas, 169 × 226  
Price: £2,500

**Paul de Monchaux**

*Equilateral* 1989  
Bath Stone, 60 × 35 × 12.5  
Price: £2,800

**Vince Donlin** (b. 1956)

*Two Mystics, One Playing Air  
Guitar*, 1989  
Oil on canvas, 44.7 × 56.7  
Price: £200

**Emma Douglas** (b. 1956)

*Girl with Tea* 1988  
Oil on canvas, 101 × 91  
Price: £425

**Alasdair Duncan** (b. 1971)

*Underground* 1989  
Oil on hardboard, 63 × 99  
Price: £750

**Iain Edwards** (b. 1962)

*Deep* 1989  
Timber, Adobe steel and wood  
stain, 40.6 × 121.9 × 40.6  
Price: £950

**Susan Elliott** (b. 1959)

*Life Raft (But Nights Fight  
Threatens)* 1989  
Oil on canvas, 96 × 121  
Price: £970

**Simon English** (b. 1959)

*During Hours* 1989  
Oil on canvasboard, 28 × 31  
Price: £300

**William English** (b. 1951)

*Actinism* 1988  
Photographs, 107 × 86  
Price: £500

**Tom Evans** (b. 1948)

*Spitalfields, Blossom Street* 1989  
Photograph (edition of 15),  
40 × 50  
Price: £200 (unframed £150)

**Mark Fairnington**

*An Illusion of Wanting* 1989  
Cibachrome transparency  
mounted in lightbox,  
36 × 28 × 17  
Price: £450

**Edwina Fitzpatrick**

(b. 1961)  
*Travelogue* 1988  
Photo dyeline on foamboard  
(printed to order on linen),  
34.3 × 200.7  
Price: £500

**Margaret Forster** (b. 1934)

*A Flower Display on a Chest of  
Drawers* 1987  
Watercolour on paper,  
26 × 21  
Price: £10

**Ann Gardner** (b. 1964)

*Portrait of Robert against a  
Persian Rug* 1989  
Oil on linen, 50 × 50  
Not for sale

**Paul Gopal-Chowdhury**

*Joey and Louise II* 1987  
Oil on canvas, 151.8 × 104.8  
Price: £6,500

**Michael Griffiths** (b. 1959)

*Still Life with Skull* 1988  
Oil on board, 42 × 36  
Price: £230

**Louella Gwillim** (b. 1950)

*Rye Lane, Peckham* 1988-89  
Oil on board, 43 × 33  
Price: £120

**Leslie Hakim-Dowek**

(b. 1960)  
*Reliquaire: Les Champs (Shrine:  
The Fields)* 1987-88  
Oil and wax on wood,  
56 × 31 × 30  
Price: £700

**Ron Haselden** (b. 1944)

*Tread Carefully* 1989  
LEDs, relays, microchips, wires  
and transformers,  
121.9 × 30.5 × 30.5  
Price: £1,500

**Geoff Henman** (b. 1967)

*Hybrid* 1989  
Wood, wire, string, wet foam,  
plastic irrigation tubing  
and polythene floor,  
167 × 263 × 280  
Price: £1,500

**Susanna Heron** (b. 1949)

*Untitled no. 15* 1988-89  
Bronze and marble,  
65.5 × 95 × 17.5  
Price: £1,000

**Gary Hilson** (b. 1966)

*Raft of the Medusa* 1988  
Colour photograph, 107 × 154  
Price: £600

**Wendy Hodge**

*Stepney Farm* 1989  
Oil on canvas, 45.7 × 86.4  
Price: £900

**Marigold Hodgkinson**

*'Water Bowl', Tidal Vessel* 1988  
Cement, steel, resin, water and  
pump, 70 × 140 × 140  
Price: £800

**Clive Hodgson**

*Choosing Fruit* 1989  
Oil on canvas, 49 × 50  
Price: £2,500

**Clyde Hopkins** (b. 1946)

*Nightwater* 1989  
Oil on canvas, 169 × 135  
Price: £2,200

**Lucy Howard** (b. 1961)

*Pot* 1989  
Ceramic, 28 × 18 × 18  
Price: £50

**Nicholas Hughes** (b. 1961)

*Morning at Smithfields* 1989  
Pastel on paper, 85 × 98  
Price: £250

**Tristan Humphries**

(b. 1962)  
*Narcissus* 1989  
Computer print-out (edition  
of 50), 106 × 81  
Price: £180 (unframed £150)

**Magnus Irvin**

*Cloud Suit Boys* 1989  
Woodcut on paper (edition of  
30), 126 × 74  
Price: £560 (unframed £500)

**Lallitha Jawahirilal**

(b. 1954)  
*Manna, I Can Console You* 1988  
Oil on board, 137 × 152  
Price: £1,200

**Maggie Jennings**

*Akhbepnytoe (Drifting)* 1988  
Lithograph on paper (edition  
of 9), 88.9 × 63.5  
Price: £95 (unframed £70)

**Steve Johnson** (b. 1953)

*Extension II (Catwalker)* 1989  
Catwalker, catcollar, bell,  
plaster, cotton, webbing and  
gold leaf (edition of 3),  
60 × 40  
Price on application

**Tam Joseph** (b. 1947)

*Alice Lakwena, The Right Stuff*  
1989  
Acrylic, sand and pigment on  
canvas, 94 × 80  
Price: £2,500

**Rob Kessler** (b. 1951)

*Building on Civilisation* 1988  
Wood, plaster, paint, paper,  
steel and gold leaf,  
43 × 59 × 61  
Price: £750

**David Leapman** (b. 1959)

*Borderland* 1988  
Acrylic on canvas, 74 × 103  
Price: £650

**Rosa Lee**

*Ellipsis* 1989  
Oil on canvas, 242 × 150  
Price: £1,100

**Eitan Lee Al** (b. 1959)

*Independence Day* 1989  
Photograph and wood,  
116.9 × 91.4  
Price: £400

- Danny Levy** (b. 1952)  
*Marina and Jennie* 1988  
Paint, wood and resin on wood, 30 × 30  
Price: £250
- Simon Levy** (b. 1963)  
*Cyclist's Lietuva* 1989  
Oil on canvas, 150 × 130  
Price: £1,500
- Marysia Lewandowska** (b. 1955)  
*Unknown Sitter* 1989  
Photographic transparencies mounted in light boxes, 33 × 71  
Price: £450
- Garth Lewis** (b. 1945)  
*April Second* 1989  
Oil on canvas, 45.5 × 46  
Price: £460
- Katharine MacCarthy** (b. 1957)  
*Hollow Debate* 1989  
Wood and resin, 150 × 150 × 110  
Price: £1,300
- Penny Machin**  
*River Settlement* 1989  
Oil on canvas, 155 × 195  
Price: £1,400
- Mary MacLean**  
*Hours of Gladness* 1989  
Oil on canvas, 200 × 150  
Price: £900
- Mark Mainwood** (b. 1964)  
*Terminal* 1989  
Acrylic and oil on board, 35.5 × 46  
Price: £350
- Antoni Malinowski** (b. 1955)  
*Untitled* 1989  
Acrylic on canvas, 183 × 244  
Price: £2,500
- Alison Marchant** (b. 1959)  
*Close to Home* 1989  
Photographs (limited edition), 114.3 × 182.9  
Price: £600
- Saša Marinkov** (b. 1949)  
*Roadworks, Northchurch Road, N1* 1988  
Woodcut on paper (edition of 10), 51 × 71  
Price: £115 (unframed £75)
- Derek Marks** (b. 1960)  
*Sea City: Night and Day* 1988  
Oil on masonite, 151.5 × 227.5  
Price: £2,000
- Patrick Martin** (b. 1958)  
*Six; Heroic Woman* 1989  
Distemper and chalk on paper, 90 × 65  
Price: £200
- Brian McCann** (b. 1952)  
*Recognition* 1989  
Graphic, ceramic and fibreglass, 180 × 97 × 120  
Price: £5,500
- Mandy McCartin**  
*Force Field* 1988  
Oil on canvas, 135 × 105  
Price: £2,200
- Mary McGowan** (b. 1953)  
*Sword Dance* 1988  
Oil on glass, 100 × 80  
Price: £500
- Robert McPartland** (b. 1953)  
*Bowl of Fruit* 1989  
Pastel on paper, 115 × 97  
Price: £950
- Yair Meshoulam** (b. 1963)  
*Planet* 1989  
Mixed media on board, 40 × 36  
Price: £440
- Jack Miller**  
*Hassidics, Stamford Hill* 1989  
Acrylic on canvas, 75 × 80  
Price: £60
- David Mollin** (b. 1959)  
*Second Relationship* 1989  
Acrylic on canvas, 150 × 213  
Price: £800
- Lucile Montague** (b. 1950)  
*City Men* 1989  
Pastel on paper, 20 × 15  
Price: £700
- Jacqueline Morreau**  
*Swimmers I* 1989  
Acrylic on canvas, 106.7 × 121.9  
Price: £4,500
- Jane Mulfinger** (b. 1961)  
*Attic* 1989  
Photographic transparencies mounted in light boxes and zips, 23 × 53 × 25  
Price: £500
- Keiko Nakamura**  
*Golden Egg Shell with Blue Bowl* 1989  
Ceramic (edition of 2), 25 × 54 × 27  
Price: £280
- Golden Gothic with Red Bowl* 1989  
Ceramic, 17 × 34 × 16  
Price: £250
- Stephen Nelson** (b. 1961)  
*Untitled* 1989  
Oil on rubber, 36 × 36 × 13  
Price: £475
- Susan Nemeth** (b. 1957)  
*Bowl* 1989  
Porcelain and body stains, 15 cm diameter  
Price: £50
- Joanna Newton**  
*Sally with Red Beads* 1987-88  
Oil on canvas, 50 × 55  
Price: £1,600
- Tom Norris** (b. 1960)  
*View from Kitchen Window* 1989  
Ink and pencil on paper, 58 × 74  
Price: £350
- David Oates** (b. 1954)  
*Black and White* 1988  
Charcoal and chalk on paper, 128 × 90  
Price: £450
- Michael O'Brien** (b. 1957)  
*Self Portrait* 1989  
Oil on canvas, 110.6 × 81  
Price: £600
- Humphrey Ocean** (b. 1951)  
*Miss Beverley Forte* 1987-89  
Oil on canvas, 53 × 46.5  
Price: £2,750
- Eilís O'Connell** (b. 1953)  
*Orixá* 1989  
Steel and canvas, 206 × 138 × 68  
Price: £3,300
- Meena Kumari Pai** (b. 1965)  
*Nightscape* 1989  
Acrylic on paper, 30.5 × 40.6  
Price: £400
- Fabrizio Panattoni** (b. 1954)  
*A Moment of Silence (for the Lockerbie Air Crash Victims)* 1988  
Photographs (edition of 5), 40.6 × 175.2  
Price: £1,000 (all proceeds to the Lockerbie Disaster Fund)
- Shanti Panchal** (b. 1951)  
*Rising* 1989  
Watercolour on paper, 94 × 72  
Price: £1,250
- Gavin Parry** (b. 1961)  
*Trade Unionist, Docklands, 11/88* 1988  
Photograph (edition of 25), 56 × 71  
Price: £50 unframed
- Roy Pegram** (b. 1923)  
*Very English Abstract Painting and Drawing after Schiele* 1989  
Acrylic on canvas, 91 × 91  
Price: £1,000
- Jenny Polak** (b. 1957)  
*Home (Back)* 1988-89  
Tin cans, 58 × 66 × 28  
Not for sale
- Michael Porter** (b. 1948)  
*Large Rock under the Branch* 1988  
Oil and PVA on canvas, 244 × 152.5  
Price: £2,800

- Kitta Potgieter** (b. 1950)  
*Standing Figure* 1988-89  
Wood, 198.1 × 55.9 × 48.3  
Price: £2,000
- Joanna Price**  
*Millwall* 1989  
Oil and gold paint on canvas,  
152.4 × 170.2  
Price: £1,100
- Maire Quinn** (b. 1961)  
*Big Boots McShannon* 1989  
Oil on canvas, 155 × 109  
Price: £870
- Joao Quintino** (b. 1960)  
*Fallen Angel – Home Series*, 89  
1989  
Photograph, 123 × 123  
Price: £400
- Michael Quirke** (b. 1959)  
*Washing Couple* 1988  
Gouache on paper, 65 × 54  
Price: £185
- Adam Reynolds** (b. 1959)  
*Lead Balloon* 1988  
Lead and cement,  
33 × 20 × 35  
Price: £700
- Geoffrey Rigden** (b. 1943)  
*Vipers Drag* 1989  
Oil on canvas, 125 × 155  
Price: £1,950
- Elsbeth Ross** (b. 1959)  
*Still Life after Juan Sanchez  
Cotan* 1988  
Colour photograph (edition  
of 5), 54 × 43.6  
Price: £80 unframed
- Andreas Ruethi**  
*Feet* 1989  
Wood and metal, 40 × 70 × 35  
Price: £400
- Giorgio Sadotti** (b. 1955)  
*Untitled Landscape* 1989  
Colour photograph (edition  
of 10), 92 × 122.5  
Price: £550 (unframed £500)
- Fitzroy Sang** (b. 1955)  
*Crossing Over* 1989  
Oil on card, 101.6 × 76.2  
Price: £750
- Stephen Scullion**  
*Osteopathy* 1989  
Bone china and bronze,  
30 × 20 × 7  
Price: £500
- Lynn Setterington** (b. 1960)  
*The Bathroom* 1988  
Quilting on cotton, 60 × 60  
Price: £200
- Yuko Shiraishi** (b. 1956)  
*Passage* 1989  
Oil on canvas, 167.6 × 152.4  
Price: £3,000
- Leo Smith**  
*Nice St Ophelia* 1989  
Oil on cloth mounted on  
board, 39 × 47  
Price: £120
- Louise Soloway** (b. 1962)  
*Ambrose's Boudoire* 1989  
Fibreglass and oil, 178 × 153  
Not for sale
- Carrie Spittle** (b. 1963)  
*Pin Up no. 208* 1989  
Oil paint and Indian ink on  
paper, 43 × 61  
Price: £325
- Andrew Stahl**  
*Magician* 1989  
Oil on canvas, 201 × 183  
Price: £2,000
- Jo Stockham** (b. 1961)  
*Cannon* 1989  
Leather, wire and trousers,  
54 × 96 × 32  
Price: £340
- Madeleine Strindberg**  
(b. 1955)  
*Off Centre* 1989  
Oil and metal on canvas,  
241.3 × 210.8  
Price: £2,500
- John Swarbrick**  
*Runner* 1989  
Luminogram, 66.5 × 56.5  
Price: £300
- Min Tabor** (b. 1922)  
*Suzi* 1988  
Oil on canvas, 59 × 43  
Price: £75
- Nicola Tassie** (b. 1960)  
*Prelude* 1989  
Earthenware, 33 × 23.5 × 23.5  
Price: £90
- Ranjana Thapalyal** (b. 1958)  
*Four Triangles* 1989  
Acrylic and pastel on paper,  
99.5 × 78  
Price: £300
- Shanti Thomas** (b. 1949)  
*The Journey* 1989  
Oil on paper, 58 × 79  
Price: £700
- Roger Tolson** (b. 1958)  
*Dust of the Ground* 1989  
Oil, charcoal and slate on  
canvas, 145 × 173  
Price: £800
- Nijogu Touray** (b. 1960)  
*Traditional Artefacts* 1987  
Oil on canvasboard, 50 × 40  
Price: £150
- Suzanne Treister**  
*Model Kit (no. 3)* 1989  
Oil on canvas, 213 × 183  
Price: £4,000
- Alison Turnbull** (b. 1956)  
*15 East 59th Street* 1988  
Oil on canvas, 150 × 200  
Price: £2,000
- Roderick Tye** (b. 1958)  
*In the Service of Fear* 1989  
Pigmented wax, 42 × 26 × 30  
Price: £2,000
- Nicola Tyson** (b. 1960)  
*The Discussion* 1989  
Oil on canvas, 99 × 88  
Price: £400
- Shafique Uddin** (b. 1962)  
*Factory Bosses* 1988  
Acrylic on paper, 67 × 95  
Price: £250
- Jim Unsworth** (b. 1958)  
*The Travelling Trombonist* 1989  
Steel, 243 × 125 × 142  
Price: £3,500
- Marc Vaux** (b. 1932)  
*SQ25* 1988  
Cellulose on aluminium and  
acrylic on wood, 99 × 99 × 15  
Price: £2,750
- Marina Wallace** (b. 1956)  
*Consummation* 1989  
Photo-silkscreen on paper,  
62.5 × 149  
Price: £650
- David Ward** (b. 1951)  
*Left Hand Right Hand* 1989  
Photographs, 146 × 225  
Price: £2,000
- Kathryn Wayman** (b. 1962)  
*Soliloquy* 1989  
Wood and cloth,  
100 × 300 × 100  
Price: £600
- Dean Whatmuff** (b. 1959)  
*Your Health and You* 1989  
Fabric, baskets and wood on  
canvas, 151 × 63 × 22  
Price: £1,000
- Rachel Whiteread** (b. 1963)  
*Ark* 1989  
Concrete, polystyrene and  
wood, 73 × 85 × 41  
Price: £1,300
- Nancy Willis** (b. 1953)  
*Self Portrait* 1988  
Etching and watercolour on  
paper (edition of 25), 50 × 40  
Price: £80 (unframed £65)
- Paul Winstanley**  
*Walkway* 1989  
Oil on canvas, 211 × 211  
Price: £2,400
- Emma Withers** (b. 1959)  
*North, South* 1989  
Mixed media on paper on  
canvas, 163 × 142  
Price: £800

Dimensions are given in centimetres with height before width before depth  
Prices include frame and commission but not VAT

## Artists in East London Schools

### New Gallery

Work by pupils and artists from recent projects organised by the Whitechapel:

15 September-1 October

Sharon Kivland and Bonner Primary School

3-15 October

Artists in Docklands Projects:  
Kevin Harrison and Harbinger Primary School and Paul Raftery and George Green's Secondary School

17-29 October

Jeffrey Dennis and Bow Secondary School for Boys, Kathy MacCarthy and St John the Baptist Primary School and Elizabeth White and Globe Primary School

The Whitechapel's Artists in East London Schools Scheme is funded by ILEA with additional grants from the Aldgate & Allhallows, Barking Exhibition Foundation and the Sir John Cass's Foundation

The Artists in Docklands Projects are funded by a Social Development Award from LDDC

### Sharon Kivland at Bonner Primary School

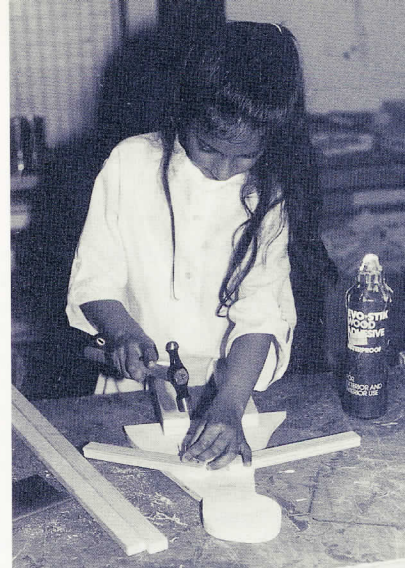
A constant passage of children up and down stairs — two stair cases at either end of the school — east and west. Each of the four hundred children in the school was photographed, rather formally, over several weeks giving, like any school photograph, a single description at a particular time rather than any definition of appearance. Each photograph was then printed in black and white, seven inches by seven inches, framed with glass and passe-partout and hung up on one of the stairs, winding around corners and providing with each step a description of the school removed from any real sense of time — except perhaps an increasing awareness that as one walked (or ran or hung around) the children got older until at the top they disappeared into the corridor that (eventually) leads to the other flight of stairs.

Here the same children appear, but no longer detachable: photographed, reduced by photo-copy into simply pairs of eyes, in blue and red, cut exactly to the size of each half brick and varnished over to make a smooth and permanent surface. The eyes and so the looks of the children have become part of the body, fabric, walls of the school, reflecting its architecture, becoming bricks in the building of school lives. Each child is quite recognisable, but perhaps only if one knows her or him can they be identified as something other than a stare. The eyes will be there forever possibly. I don't know what will happen to the other stair when the photographs go; finally home with the children. By then, some of the children will have gone too.

### Kevin Harrison at Harbinger Primary School

(Artists in Docklands Project)

During the term's residency, I worked with every class in the school. The children ranged in age from 3½ years to 11 years old. I gave the children an opportunity to gain competence with woodworking tools and confidence through building a large sculpture from their own drawings. The children drew what they saw from the school windows and used this personal view as inspiration for their sculpture. I tried to encourage



*Pupil from Harbinger Primary School working with Kevin Harrison*

them not only to describe and illustrate but to comment through the work and elicit meaning from the changing environment of Docklands. I was satisfied by the high quality and complexity of the sculpture the children made that my ambitions for the project were achieved.

### Paul Raftery at George Green's Secondary School

(Artists in Docklands Project)

During my two-term residency at the school, I worked in collaboration with the art department and mostly with third year groups. Collectively, we decided that by making observational drawings and taking photographs of the areas that the pupils knew well, we could work towards creating large photographic and mixed media panoramas which would reflect our perceptions of the changing face of Docklands.

Half the group used photography to make their observations and the other half were encouraged to draw. While the photography group learned how to enlarge prints, the drawing group scaled up their work and then cut out shapes to use for printing and stencilling. Once a scale had been decided, montage was used to bring the different elements together.

I also worked with small groups of pupils to explore different photographic techniques and worked on a project of my own. This resulted in a large photographic installation on the river shoreline.

All of the work made in the school was exhibited at the end of term at the Asda superstore in the centre of the Isle of Dogs.

### **Jeffrey Dennis at Bow Secondary School for Boys**

At the beginning of the residency, I introduced some of my pictures and ways of working to two fourth-year art groups at Bow Secondary School for Boys. I had been asked to bear in mind the specific requirements of the GCSE exam which these students would be entering this coming year.

I worked on a painting of my own in their classroom while conducting drawing projects and accompanying the boys on visits to local workplaces. I wanted them to find ways to manipulate the material that came out of this activity – drawings, notes and photographs around a theme of 'work' – in ways which served the imagination as much as recording observation. Within the paintings that emerged, I encouraged them to use a variety of different media and materials, to experiment with scale and colour, and above all to hunt the 'happy accident'.

### **Kathy MacCarthy at St John the Baptist Primary School.**

#### *a) Class 3/4L*

My work with 3/4L started in July 1988. After discussions with class and teacher we decided to focus on the theme of 'Creation' centred on the Wildlife Area. The children then worked creatively on 'creature' designs using a variety of media, having firstly been introduced to the concept of wooden sculpture.

We decided that the large brick wall which is the western boundary of the area, could be enhanced with sculptured designs. Richard Deacon's exhibition at the Whitechapel gave a well-timed chance to widen our understanding of a sculptor's work and philosophies. The children's dramatic interpretations of form were focused by this experience and they looked again at their animal shapes.

Eight of the sixteen sculptures were selected by the children for transfer on to large marine plywood; Trimite paint was used to introduce patterns.

#### *b) Class 2B*

The major aspect of 2B's involvement with the project was working on the design of the metal gates to the pond and conservation area. In the early days the children and I visited St. Katherine's Dock

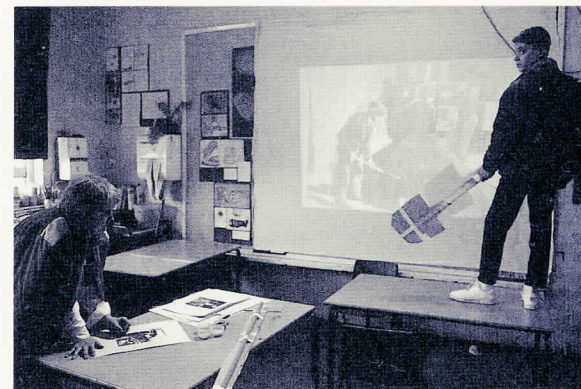
to discuss, draw and observe gate and bridge structures, and to talk over possible techniques and materials for the gate. Three-dimensional wooden structures explored strength and stability in design.

From working drawings through to detailed paintings, the children built up wooden working models of their designs which incorporated aspects of school life and the Wildlife Area. The components were then drawn together into the final design which was brought to life in John Crisfield's Sculpture Factory.

### **Elizabeth White at Globe Primary School**

The Globe School artist's residency was at the invitation of Corinne McGregor and Catherine Hale, who asked for a woman artist to promote confidence and skills in three-dimensional construction, particularly as an encouragement to young Bengali girls. In an early residency at Malmesbury School I painted figuratively; here I ran workshops throughout the school with an underlying theme on solid geometry. With some emphasis on drawing and discussion, small groups of children worked through a variety of projects, constructing with cane and wood, plastering simple armatures, using scrap materials to make imaginative environments within the four planes of an icosahedron base, a musical instrument and a model skeleton. There were hammered and enamel-painted metals, reed house structures, a brushwood shelter in Epping Forest and, of art straws and cane, geodesic domes. We supplemented story-telling techniques by using both silhouette and transparent coloured images on acetate and x-ray plates on a light box. I attempted to improve the use of school materials, preparing inexpensive grounds for colour work and introducing soft graded pencils, but we also used watercolour paper and painted on silk. The private maquettes I made were based on solid geometry with strong references to signal repressants found in nature and in primitive architecture, and to Yeats' symbolism.

*Pupils from Bow Secondary School for Boys working with Jeffrey Dennis*



## Diary of Openings

### **16-17 September**

Martello Street (SPACE)  
Victor House (SPACE)

### **16-18 September**

Richmond House Studios (SPACE)

### **21-24 September**

Cable Street Studios

### **22-24 September**

Angel Studios  
Pixley Street Studios

### **22-26 September**

Metropolitan Wharf

### **29 September-1 October**

Barbican Arts Group  
Beck Road (ACME)  
Deborah House (SPACE)  
Leyton Artists Group  
Vyner Street Arts  
Vyner Street Studios

### **30 September-1 October**

Milborne Street (SPACE)  
Robinson Road (ACME)

### **30 September-2 October**

Belsham Street (SPACE)

### **6-8 October**

Vyner Street Arts  
Vyner Street Studios

### **13-15 October**

New Hoxton Workshops  
Red Cow Studios

### **14-15 October**

Berry Street (SPACE)  
Britannia Works (SPACE)  
Chisenhale Studios  
Norfolk House Studios (SPACE)

### **18-22 October**

Delfina Studios

### **20-22 October**

Carpenters Road (ACME)  
Unit 7

### **21-22 October**

Chilton Street Studios

# East End Open Studios

Artists open their studios to the public

Open studio exhibitions are organised by artists at their places of work. The studios are open to the public for a few days and a number can be visited within the same building. Painting, sculpture, prints, photography, ceramics, textiles, film and video are all on show and there are opportunities to meet artists and to purchase work in an intimate and informal atmosphere

# Angel Studios

5 Torrens Street, London EC1  
 Telephone: 01-837 1015/833 2627/833 2617  
 22-24 September 2-8pm  
 (preview 21 September 6-9pm)

## Mark Gill Attlesey (b. 1960)

- 1987 Goldsmiths' College Gallery, London  
*Summer Exhibition*, Royal Academy of Arts, London  
*Winter Solstice Showcase* in aid of Terrence Higgins Trust
- 1988 Leicester Collection for Schools and Colleges  
 Solo show, Sue Williams Gallery, London  
 Group show, Pelter/Sands Fine Art, Bristol

## David Bickerstaff (b. 1957)

- 1986 Solo show, Rhumbarallas Gallery, Melbourne  
 Group show, Rhumbarallas Gallery, Melbourne
- 1987 Solo show, Rhumbarallas Gallery, Melbourne
- 1988 Solo show, Grande Masse Des Beaux-Arts, Paris  
 Group show, Giray Gallery, London
- 1989 Group show, Sparts Gallery, Paris

## John Bischoff (b. 1963)

- 1986 Solo show, Polish Cultural Centre, London
- 1987 Mural for Tottenham Council, London  
 Exhibited at Wimbledon School of Art, Goldsmiths' College and Forum Hotel  
 Work in collections in England, Germany, Switzerland and USA

## Sarah Blec (b. 1962)

- 1983-86 Birmingham Polytechnic, BA(Hons) Fine Art
- 1987 Leicester Education Authority Exhibition
- 1988 Solo show, 50-52 Rivington Street, London
- 1989 Group show, Smiths Galleries, London  
*Art and Nature*, Flaxman Gallery, London
- 1989-91 Royal College of Art, MA

## Sheila Bryan

- 1987 *Docklands Art '87*, London
- 1988 *Summer Exhibition*, Royal Academy of Arts, London  
*Whitechapel Open*, Whitechapel Art Gallery, London  
*Royal Overseas League*, Mall Galleries, London
- 1989 *Artlife*, Norwich Union, Norwich  
 Group show, Peterborough Museum and Art Gallery

## Catherine Clover (b. 1963)

- 1986 Two person show, University of Reading
- 1987 Initiated, organised and exhibited in *Art Works Two*, London University  
 Initiated, organised and exhibited in *Heaven*, London  
 Official opening of 'St. Mary of the Angels' Studios
- 1988 Solo show, Grove Gallery, London
- 1989 Group show, Smiths Galleries, London

## Tim Corby (b. 1966)

- 1984 Munnings Award, British School in Rome
- 1984-87 Middlesex Polytechnic, BA (Hons) Fine Art

Exhibited at The British School in Rome, Whittington School of Art, Wimbledon School of Art and Goldsmiths' College

## Stephen Elson (b. 1963)

- 1985 Elizabeth Greenshields Foundation Award
- 1986 *4th International Ice Carving Competition*, France  
*ILEA Class of '86*, Royal Festival Hall, London  
*Fresh Art*, Concourse Gallery, Barbican Centre, London

1986-88 Rome Scholar in Sculpture

- 1988 Group show, The British School in Rome

## Ann Menpes Gavin (b. 1940)

- 1986-87 *The South Bank Picture Show*, Royal Festival Hall, London
- 1987 Bloomsbury Gallery, London  
 Heaven Club, London
- Exhibited at Westham Town Hall, Tom Allen Centre and Stratford Theatre

## Dominique Ann Grantham (b. 1964)

- 1985 *Nine Printmakers*, Intaglio Printmaker, London
- 1986 Group show, London University

- 1987 *20th Century Prints*, Cadogan Contemporary Gallery, London  
*National Student Show*, Cornerhouse, Manchester
- 1988 *1988 Print Show*, Angela Flowers, London  
*1988 Leicester Exhibition*

## Adam Gray (b. 1963)

- 1985 *Whitworth New Contemporaries*, Whitworth Art Gallery, Manchester
- 1987 Solo show, Anderson O'Day Gallery, London  
*Athena Art Awards*, Barbican Centre, London (under 25 prizewinner)
- 1988 *Whitechapel Open*, Whitechapel Art Gallery, London
- 1989 *Small is Beautiful*, Flowers East, London  
 Solo show, Anderson O'Day Gallery, London

## Alison Harper (b. 1964)

- 1981-85 Glasgow School of Art, BA (Hons) Fine Art
- 1985 *New Generation*, Compass Gallery, Glasgow
- 1986 Group show, Kunsternes Hus, Oslo  
 Solo show, Oslo Kunst Akadami
- 1988 Solo show, Oslo Kunst Akadami  
 Solo show, McGavigan's Gallery, Glasgow

## Teri-Jane Harris (b. 1964)

- 1983-86 Cardiff School of Art, BA (Hons) Fine Art
- 1985 Group show, Chapter Arts Centre, Cardiff
- 1986-88 Slade School of Fine Art, London
- 1988 Group show, Royal Academy of Arts, London
- 1989 Group show, Smiths Galleries, London

## Adrian Hemming (b. 1945)

- 1970-75 Brighton Polytechnic
- 1980-82 Goldsmiths' College, London
- 1982 Arts Council of Great Britain Award  
 Solo show, Edward Totah Gallery, London
- 1986 Solo show, Jablonski Gallery, London
- 1989 Solo show, Esmeralda National School of Art, Mexico City

## Nicky Hirst (b. 1963)

- 1982-85 Maidstone College of Art, BA (Hons) Fine Art
- 1986 Solo show, Artspace Gallery, Leeds  
*Open Art '86*, Mappin Art Gallery, Sheffield
- 1987 Solo show, Artspace Gallery, Leeds
- 1988 Solo show, The Hawksworth Gallery, Ilkley



**Smiljana Kudic**

- 1975-82 Faculty of Fine Arts, Belgrade  
 1984 *Cité des Arts*, Paris  
 1986 *Pokajnica*, Velika Plana  
 1987 Solo show, *Carmine and Vermilion*, Belgrade  
 1988 Group show, Pancevo  
 1989 Group show, Cacak

**Leo** (b. 1963)

- 1987 New Art in Yorkshire  
 1988 *Eclectic Chairs Exhibition*, St. Pauls Gallery, Leeds  
 Artist in Residence, Wakefield 100 Festival  
 1989 Kunstlerhaus Dortmund, Germany  
 Work in collection of Bleeker Street Gallery, New York  
 Visiting lecturer, Jacob Kramer College, Leeds

**Caroline List** (b. 1964)

- 1983-86 Portsmouth Polytechnic BA (Hons) Fine Art  
 1987-88 Chelsea School of Art, MA  
 1988 *The Future Famous*, Century Gallery, London  
 1989 *Images of Paradise*, Harewood House, Yorkshire

Work in collection of Contemporary Art Society

**Philippa Van Loon** (b. 1964)

- 1984-87 Chelsea School of Art, BA (Hons) Fine Art  
 1985 Portland Quarry Sculpture Park  
 1987 Two person show, The London Institute  
 Draughtsman on archeological excavation in Syria  
 Designed and painted bottom of swimming pool in France

**Mary MacLean** (b. 1962)

- 1982-85 Glasgow School of Art, BA (Hons) Fine Art  
 1985-86 Amsterdam Rijksacademie, Postgraduate Study  
 1986-88 Royal College of Art, London  
 1989 *Young Artists in Focus*, Business Design Centre, London  
 The Scottish Gallery, Edinburgh  
*Artist of the Day*, Flowers East, London

**Jane McCourt**

- 1980-81 Harrow School of Art  
 1981-84 West Surrey College of Art and Design, BA (Hons) Fine Art  
 1985-87 Academia de San Carlos, Mexico, Postgraduate Scholarship Fine Art

**Neil Miller**

- 1983-86 Duncan of Jordanstone College of Art, BA (Hons) Fine Art  
 1985 John Milne Purvis travel scholarship  
 1986 Elizabeth Greenshields Foundation Award  
 1986-87 Chelsea School of Art, MA  
 1988 Solo show, Creaser Gallery, London  
 1989 McGrigor Donald Sculpture Prize

**Sarah Parker** (b. 1964)

- 1984-87 Leeds Polytechnic, BA (Hons) Fine Art  
 1987 Group show, Leeds Polytechnic Gallery  
 1988 Solo show, Shipley's Bookshop, London  
 Group show, Debbie Bowen Gallery, USA

Work in private collections in England and USA

**Matthew Roberts** (b. 1960)

- 1980-83 South Glamorgan Institute of Higher Education, Cardiff  
 1986 Welsh Arts Council travel grant  
 French Government Scholarship  
*Wish You Were Here*, Chapter Arts Centre, Cardiff  
 1987-88 Ecole des Beaux Arts, Paris  
 1988 Galerie Bernanos, Paris

**Katy Sayers** (b. 1961)

- 1981-84 Ruskin School of Drawing, BA (Hons) Fine Art  
 1982 Group show, Museum of Modern Art, Oxford  
 1983 Summer scholarship to Skowhegan School of Painting and Sculpture, USA  
 1985 Group show, Winchester School of Art  
 1986 Mural commission for Camden Council

**Katy Shepherd** (b. 1961)

- 1980-83 Sheffield Polytechnic, BA (Hons) Fine Art  
 1985 Solo show, Mall Galleries, London  
 1987 Solo show, Poole Arts Centre  
 1989 *Inner Language*, Ikon Gallery, Birmingham and tour  
*Pacesetters*, Peterborough Art Gallery  
 1989 Royal College of Art, MA

# Barbican Arts Group

12-14 Hertford Road, London N1  
 Telephone: 01-241 0651  
 29 September-1 October/ 11 am-6pm  
 (preview 29 September 6.30-8.30pm)

**Coral Blackburn** (b. 1961)

- 1980-83 Manchester Polytechnic, BA (Hons)  
 1985 *Hull Artists Association Exchange Exhibition*, Hull  
 Solo show, Wolseys Bar, London  
 1986 Group show, Artworks Space, London  
 1987 Solo show, Artworks Space, London  
 1988 Solo show, Artworks Space, London



Barbican Arts Group Studios

**Colleen Buzzard** (b. 1958)

- 1981-82 The Front Yard Gallery, Berkeley, California  
 1982 Gaslight Gallery, California  
 1984 Boston University, USA  
 1986 *Ceramics on Sycamore Street*, Artworks Space, London  
 1987 *Inside/Outside*, Artworks Space, London  
 1988 *Uncommon Places*, Artworks Space, London

**Sheila Clark** (b. 1960)

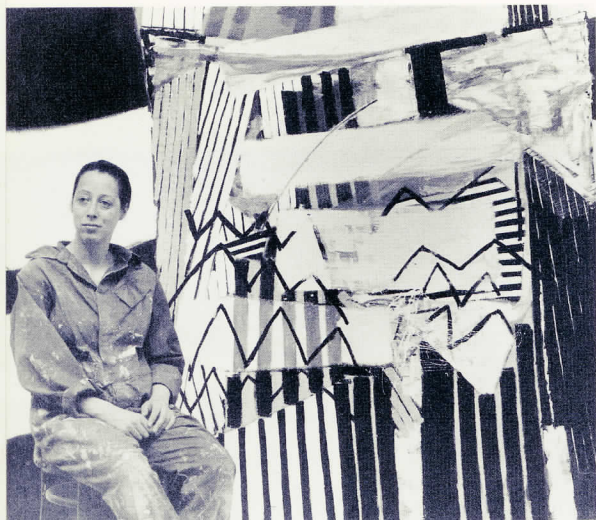
- 1980-83 Middlesex Polytechnic, BA (Hons) Fine Art  
 1984-86 Royal College of Art

- 1987 Artist in Residence, Durham School  
Solo show, Durham School
- 1988 *Spirit of London*, Royal Festival Hall, London
- 1989 *Two Artists*, Endell Street Gallery, London

**Liz Clifford** (b. 1961)

- 1981-85 Fine Art and Education, Homerton College, Cambridge
- 1987 *Mount San Jacinto Open*, California
- 1988 Solo show, Hardware Gallery, London  
Group show, Blast R-101, London  
Group show, Diorama, London

Work in collections of Claire College, Cambridge and St. Thomas Hospital, London



Rosamond Hatton in her studio at the Barbican Arts Group Studios

**Jane Cunningham** (b. 1958)

- 1976-77 North Staffordshire Polytechnic
- 1977-80 Loughborough College of Art Design, BA (Hons) Ceramics
- 1982-84 Texas Christian University, MFA Ceramic Sculpture
- 1985 *Hull Artists Association Exchange Exhibition*, Hull
- 1987 *Inside/Outside*, Artworks Space, London
- 1988 Penny Bank Gallery, London

**Lesley Dalton** (b. 1957)

- 1976-77 Loughborough College of Art and Design
- 1977-80 Leicester Polytechnic, BA (Hons) Painting
- 1982 Solo show, St. Martin's Gallery, Leicester
- 1984 Solo show, Magazine Workspace, Leicester  
Solo show, Loseby Gallery, Leicester
- 1986 Solo show, Artworks Space, London

**Barry Edwards** (b. 1952)

- 1972-75 Middlesex Polytechnic, BA (Hons) Fine Art
- 1975-78 Royal College of Art, MA
- 1983 Cheltenham Park Gallery  
*Evening Standard Awards*  
*South Bank Exhibition*, Royal Festival Hall, London
- 1988 Penny Bank Gallery, London

**Barbara Fennick** (b. 1957)

- 1975-79 Lafayette College in Easton, BA Biology
- 1976 Rhode Island School of Design
- 1980-83 School of the Museum of Fine Arts, Boston, MA
- 1985 Group show, EMBL, Heidelberg, West Germany
- 1986 Solo show, Keramik und Kunst, Heidelberg, West Germany
- 1987-89 Heidelberg University, West Germany, Art History

**Trevor Flynn** (b.1955)

- 1975-78 Leicester Polytechnic graduation travel award
- 1984 *Whitechapel Open*, Whitechapel Art Gallery, London
- 1985 *A London Reflected*, Artworks Space, London
- 1986 Solo show, Mario Flecha Gallery, London
- 1987 *The South Bank Picture Show*, Royal Festival Hall, London
- 1989 *MA Degree Show*, Goldsmiths' College, London

**Susan Goldblatt** (b. 1947)

- 1967-70 Liverpool University, Architectural Studies
- 1970-73 School of Architecture, Polytechnic of Central London
- 1979-83 Byam Shaw School of Art
- 1987 Solo show, Burgh House Gallery, London

- 1988 Open Studio, Barbican Arts Group  
*Society of Architect Artists Annual Exhibition*, London

**Rosamonde Hatton**

- 1972-76 St. Martin's School of Art
- 1982 Solo show, Tricycle Theatre, London
- 1984 Solo show, Collegiate Theatre, London
- 1986 Solo show, Vortex Gallery, London  
Work in collections of Leicestershire County Council and St. Bartholomews Hospital

**Timothy Hyman** (b. 1946)

- 1963-67 Slade School of Fine Art
- 1981/83/85 Solo shows, Blond Fine Art, London
- 1984 Lincoln Residency show and tour
- 1985 *A London Reflected*, Artworks Space, London  
Solo show, Westfield College, University of London
- 1988 Solo show, Contemporary Art Gallery, Ahmedabad, India

**Magnus Irvin** (b. 1952)

- 1969-70 Hornsey College of Art
- 1970-73 Walthamstow College, North East London Polytechnic
- 1988 Two person show, Redfern Gallery, London  
*Whitechapel Open*, Whitechapel Art Gallery, London
- 1989 Solo show, Mostyn Gallery, Llandudno  
*Summer Exhibition*, Royal Academy of Arts, London

Work in collections of Arts Council of Great Britain and The British Museum

**Lucille Montague** (b. 1950)

- 1967-69 Plymouth College of Art and Design
- 1971-74 Byam Shaw School of Art
- 1985 Solo show, Mario Flecha Gallery, London
- 1985/86/87 *Summer Exhibition*, Royal Academy of Arts, London
- 1988 *The Subjective City*, Small Mansion Arts Centre, London
- 1989 *Ways of Telling*, Mostyn Gallery, Llandudno and tour

**Terence Rosenberg** (b. 1954)

- 1973-74 Bristol University, Architecture
- 1975-76/77-78 Ruskin School of Drawing
- 1976-77 Massachusetts College of Art, Boston

- 1979-82 Royal College of Art, London
- 1982 Organiser and participant in Essex University Art and Literature Festival
- 1984 Amnesty International travelling exhibition
- 1987 Three person show, New York

**John Sexton** (b. 1944)

- 1966-67 Hammersmith College of Art
- 1972 Churchill Fellowship
- 1980-82 Goldsmiths' College, MA
- 1986 Solo show, Artworks Space, London
- 1987 *Three London Artists*, PS122 Gallery, New York
- 1989 Mario Flecha Gallery, London

**Dillwyn Smith** (b. 1958)

- 1983-86 Royal College of Art, MA
- 1986 Barclays Bank Painting Competition (award winner)
- 1987 Artist in Residence, Artists Unlimited, Bielefeld, Germany
- 1988 Solo show, Kunsthalle Bielefeld, Germany
- Solo show, Henry Moore Gallery, Royal College of Art, London
- 1989 Triangle Workshop, New York State

**Sally Stephens** (b. 1961)

- 1980-83 Roehampton Institute of Higher Education, BA (Hons) English and Art
- 1987 Last Chance Centre, London
- Women in the Arts* week, London Borough of Wandsworth
- 1987-89 Central School of Art and Design
- 1989 Crypt Gallery, London

**William Stok** (b. 1946)

- University of Architecture and Academy of Sculpture, Rome
- 1972-73 St. Martin's School of Art, Advanced Sculpture
- 1984 Solo show, Arnolfini, Bristol
- Solo show, Françoise Lambert, Milan
- 1987 Solo show, Albert Baronian, Knokke
- 1988 Solo show, Apollodoro, Rome



Magnus Irvin (Barbican Arts Group), 'World Without End', 213 x 213cm

**Shanti Thomas** (b. 1949)

- Camberwell School of Art and Crafts
- 1987 Solo show, *Paintings and Drawings*, Commonwealth Institute, London
- 1988 *Whitechapel Open*, Whitechapel Art Gallery, London
- 1988-89 *The South Bank Picture Show*, Royal Festival Hall, London
- 1988-90 *Inner Language*, Ikon Gallery, Birmingham and tour

Work in collection of Arts Council of Great Britain

**Mark Wainwright**

- 1973-76 Ruskin School of Drawing
- 1983-86 Royal College of Art
- 1984 Angela Flowers Gallery, London
- 1987 Curwen Gallery, London
- 1988 *The London Group Show*
- Scholarships from Mendelson Trust and John Minton

# Beck Road

## (ACME)

London E8  
29 September-1 October/1-6pm

**Peter Bunting** (b. 1947)

- Byam Shaw School of Painting, London
- 1985 TSWA touring exhibition
- 1986 *Walking and Falling* touring exhibition
- Contrariwise* touring exhibition
- 1987 *Athena Art Awards*, Barbican Centre, London
- 1988 *A Green Thought*, Pomeroy Purdy Gallery, London

**Helen Chadwick** (b. 1953)

- 1973-76 Brighton Polytechnic
- 1976-77 Chelsea School of Art
- 1984 *Aperto 84*, Venice Biennale
- 1986-87 *Of Mutability*, Institute of Contemporary Arts, London
- 1987 Short listed for Turner Prize
- 1989 *Lamps*, Marlene Eleini Gallery, London

**Mikey Cuddihy** (b. 1952)

- 1969-71 Central School of Art and Design
- 1971-74 Chelsea School of Art
- 1985 Three person show, Riverside Studios, London
- 1987 Solo show, Unit 7 Gallery, London
- Plan K Gallery, Brussels
- 1989 Flowers East, London

**David Hamilton** (b. 1954)

- 1972-76 Sheffield and Leeds Polytechnics
- 1978-81 Royal College of Art
- 1988 Group show, The Minories, Colchester
- BBC TV Open Space *Artists in Residence*
- South of Aswan* reproduction for Labi Siffre's album and poster
- 1989 *Surrealism*, Bury St. Edmunds Art Gallery

**Phyllis Mahon** (b. 1953)

- 1972-75 University of Ulster, BA (Hons) Painting
- 1975-76 University of Ulster, Higher Diploma

- 1988 *Women Embracing a Dream*, Kerlin Gallery, Dublin  
Solo show, Ayling Porteous Gallery, Chester
- 1989 *Dreams and Desires*, Octagon Gallery, Belfast  
*Open Print '89*, Bankside Gallery, London

**Elizabeth de Monchaux** (b. 1965)

- 1985-88 Central School of Art and Design, BA (Hons) Fine Art
- 1987 *Sculpture from a Box*, Trondheim, Norway  
Group show, Central School of Art
- 1988 *Whistler's Mother*, Anne French Warehouse, London

**Sandra Porter** (b. 1957)

- 1976-80 Stourbridge College of Art
- 1980-81 Chelsea School of Art
- 1985 Group show, Curwen Gallery, London
- 1986-88 Visiting lecturer, West Sussex College of Design, Birmingham Polytechnic, Cheltenham College of Art and Waltham Forest College
- 1988 *Black and White from Rouge Press*, Oriol Theatre, Clwyd
- 1989-90 *Tower 1986* front cover of *The Women Artists Diary 1990*

**Francis Quesnel**

- St. Martin's School of Art, History of Art and Graphics
- Brighton College of Art
- 1976 Solo show, Gardner Arts Centre, Sussex University
- 1977 Solo show, Air Gallery, London
- 1983-85 Travelled to galleries and museums in Europe and USA

**Marja-Leena von Ronkko** (b. 1948)

- 1965-67 School of the Finnish Academy of Fine Arts
- 1967-68 Helsinki University
- 1977-78 Putney School of Arts  
Morley College
- 1978-81 Chelsea School of Art
- 1980-84 The Open University
- 1982-87 University of Surrey

**Trevor Shearer** (b. 1958)

- 1976-77 Chelsea School of Art
- 1977-80 Bath Academy of Art

- 1989 *Colour in Context*, Serpentine Gallery, London  
*Interim Jeune II*, Interim Art, London

**Peter Smith** (b. 1955)

- 1971-73 West Sussex College of Design
- 1973-76 Wimbledon School of Art
- 1982 Spectro Gallery, Newcastle-upon-Tyne
- 1983 *From Gonzales to Tzara*, Bernard Jacobson Gallery, London
- 1984 'J' Warehouse, London
- 1987 *Eight by Eight*, Curwen Gallery, London

**Svar** (b. 1960)

- Chelsea School of Art, Foundation
- Central School of Art, BA (Hons) Sculpture
- 1988 *The Call of the Serpent*, Chisenhale Gallery, London and tour  
*We're Back*, Brixton Art Gallery, London
- 1989 *La Grande Ghizzo* (director and camerawork for film)

**Helen Sydney** (b. 1962)

- 1978-81 Amersham College of Art and Design, Textile Design
- 1981-84 Camberwell School of Arts and Crafts, Textile/Fashion
- 1989 Two person show, Aberystwith Arts Centre

**Alison Turnbull** (b. 1956)

- 1975-77 Academia Arjona, Madrid
- 1977-78 West Surrey College of Art and Design
- 1978-81 Bath Academy of Art
- 1988 Greater London Arts Award
- 1989 Solo show, Anne Berthoud Gallery, London

**Anne Wallace** (b. 1960)

- 1978-81 Amersham College of Art and Design, Textile Design
- 1981-84 Ravensbourne College of Art and Design, BA (Hons) Fine Art
- 1984 *Hunting Group Art Prizes*, Mall Galleries, London
- 1987 *Mile End Group Exhibition*, International Maritime Organisation  
*Ayling Porteous Christmas Exhibition*, *Chester Group Show*, Patricia Brown, London

# Belsham Street (SPACE)

First Floor, 16 Belsham Sreet, London E9  
Telephone: 01-985 4891  
30 September-2 October/12-6pm  
(preview 29 September 6-9pm)

**Tim Gardner** (b. 1958)

- 1976-77 Camberwell School of Arts and Crafts
- 1978-81 Wimbledon School of Art, BA (Hons) Fine Art

**Siobhan Liddell** (b. 1965)

- 1982-86 St. Martins School of Art  
Exhibited at Rundell Tower, London and River Cafe, London

**Simon Nicholas** (b. 1954)

- 1982 Group show, Newcastle Polytechnic Gallery
- 1983 Group show, Anne Berthoud Gallery, London
- 1987 Solo show, Bergens Kunstforening, Norway
- 1988 Group show, Brighton Polytechnic Gallery
- 1989 Solo show, Drammen Kunstforening, Norway  
Solo show, Galleri Garmer, Gothenburg, Sweden

**Jane Ostler** (b. 1958)

- 1976-80 Bath Academy of Art, BA (Hons) Fine Art
- 1982 *5 British Artists*, Syracuse, New York
- 1987 *Whitechapel Open*, Whitechapel Art Gallery, London
- 1988 *Riverside Open*, Riverside Studios, London  
*Everyone a Winner*, Hackney Museum, London

**David Ryan** (b. 1956)

- 1975-78 Coventry Polytechnic, BA (Hons) Fine Art
- 1980 Painting scholarship in Lubeck, Hamburg and Berlin, West Germany  
Galerie Thomas Gaulin, Lubeck, West Germany
- 1988 Cleveland College of Art Gallery
- 1989 *Diversities and Distances*, Woodlands Art Gallery, London

# Berry Street

## (SPACE)

8 Berry Street, London EC1  
Telephone: 01-253 0389  
14-15 October (preview 13 October 6-9pm)

### Philippa Beale (b. 1946)

- 1965-69 Goldsmiths' College, Sculpture/Photography
- 1969-70 University of Reading, Psychology and Philosophy of Education  
Goldsmiths' College, MA
- 1982 *Baby Love*, Angela Flowers Gallery, London
- 1983 Artist in Residence, Southampton City Art Gallery

Exhibited in group shows at the Institute of Contemporary Arts, London and in Arts Council of Great Britain touring shows

### Slavomir Blatton (b. 1943)

- The Warsaw Academy of Fine Arts, MA Painting
- Received scholarship from Polish Ministry of Culture
- 1970 Settled in London
- Exhibited in many group and solo shows in Great Britain and abroad
- Work in private collections

### Robert Bramwell-Jones (b. 1947)

- 1980-84 Byam Shaw School of Art
- 1987 *New Art in Exeter*, Spacex Gallery, Exeter
- 1987 *Athena Art Awards*, Barbican Centre, London
- 1988 *New Art in Exeter*, Spacex Gallery, Exeter
- 1989 *Ways of Telling*, Mostyn Gallery, Llandudno and tour  
*Critics Space 5*, Air Gallery, London

### Joanna Buxton

- 1986 *Tapestry — Contemporary Imagery/Ancient Tradition*, Washington Artist/Weaver in Residence, Barbican Art Gallery, London
- 1988 Solo show, *Intrepid Woman — A Celebration of Women Travellers*, Contemporary Textile Gallery, London  
Carpet Design Commission, Ritz Casino, London  
Tapestry commission for member of Royal Ballet, London

- 1989 Winner of Open Competition for Tapestry Commission, Cardiff

### Graça Coutinho

- 1967-71 Lisbon Fine Art School, Sculpture
- 1974-77 St. Martin's School of Art, Advanced Painting
- 1986 Solo show, Bertrand Gallery, Lisbon
- 1987 Solo show, The Showroom, London
- 1988 Solo show, Todd Gallery, London
- 1989 Calouste Gulbenkian Museum, Lisbon

### Susan Gamble (b. 1957)

- 1974-75 Winchester School of Art, Foundation
- 1976-79 Goldsmiths' College, BA (Hons) Fine Art
- 1983 Formation of partnership of Wenyon and Gamble
- 1984 Solo show, Galerie Peter Ludwig, Cologne  
*Wenyon and Gamble: New Holograms*, Glynn Vivien Gallery, Swansea
- 1985 *Speckle Holograms*, Goldsmiths' College Gallery, London

### Ronald Greaves (b. 1916)

- Penzance School of Art
- St. Martin's School of Art
- Birmingham College of Art
- Courtauld Institute
- 1986 Group show, City of London, Guildhall
- 1986/87-88 Open studio, Berry Street

### Bé van de Heide

- 1956 Academy of Fine Arts, Enschede, Holland
- 1976 Solo show, A Space, Toronto
- 1987 Solo show, The Showroom, London
- 1988 Solo show, Endell Street Gallery, London
- 1989 Solo show, Galerie Biervliet, Amsterdam  
*Ways of Telling*, Mostyn Gallery, Llandudno and tour

### Alyson Hunter

- 1986 *Back Thoughts*, Lamont Gallery, London
- 1987 *Black Paintings 1985-87*, Slaughterhouse, London  
*Erewon*, New Zealand House, London
- 1988 *Prints 1988*, Angela Flowers Gallery, London  
Solo show, Litvanoff Gallery, London

Work in collections in Australia, Canada, Great Britain, New Zealand and USA

### Deanna Jackson (b. 1941)

- 1987 Leicester County Council Purchase Scheme

*Summer Exhibition*, Royal Academy of Arts, London

- 1988 *Pacesetters*, Peterborough Museum
- Solo show, Lewisham Town Hall, London
- 1989 *Critics Space 5*, Air Gallery, London

### Lisa James (b. 1949)

- 1967-72 Edinburgh College of Art
- 1984-86 Goldsmiths' College, MA
- 1988 Solo show, Creaser Gallery, London  
*PNL UK Cypriot Exhibition*, Famagusta Gate, Nicosia, Cyprus
- 1989 Solo show, Creaser Gallery, London  
*Kontakt 2 Kontakt*, Galeria E1, Elblag, Poland

### Audrey Jenkinson (b. 1936)

- 1957-63 Theatre costumes for Theatre Quotidien de Marseille
- 1971 Costumes for Antoine Bourseiller's *The Brigands*
- 1976 Costumes for The Mama Company of New York's *As You Like It*
- 1977 Scenery for Jean Mercure's *Cosi Fan Tutte*
- 1980 Exhibited designs in Brussels
- 1986/88 *Le Genie de la Bastille*, Paris

### Thalia Laird (b. 1967)

- 1986 Worked with Vogue Magazine, London
- 1986-89 University of Newcastle-upon-Tyne, Architecture
- 1988 Worked for Press Office, Edinburgh International Festival  
Architectural project trip to Portugal

### Colette Morey de Morand

- 1987 Solo show, Stephen Bartley Gallery, London  
Solo show, Crown Reach Gallery, London
- 1988 Solo show, Todd Gallery, London  
Solo show, Janne Land Gallery, Wellington, New Zealand
- 1989 *Idylls of '89*, Todd Gallery, London  
*Critics Choice 5*, Air Gallery, London

### Suzanne O'Driscoll (b. 1955)

- 1974-77 Central School of Art and Design
- 1977-79 Slade School of Fine Art
- 1980 Boise travelling scholarship to Mexico and Guatemala
- 1987 Solo show, Anderson O'Day Gallery, London

- Solo show, South Hill Park Gallery, Bracknell
- 1989 Solo show, Anderson O'Day Gallery, London

**Mary Plant** (b. 1943)

- 1976-80 Chelsea School of Art BA (Hons) Painting
- 1980-81 Chelsea School of Art, MA, Painting
- 1983 Solo show, Jenny Stein's House Gallery, London
- 1988 *Le Genie de la Bastille*, Paris
- 1989 *PNL UK Cypriot Exhibition*, Famagusta Gate, Nicosia, Cyprus
- Critics Space 5*, Air Gallery, London

**Debbie Thompson**

- Harrow School of Art, Painting and Architecture
- London Polytechnic, Printing and Illustration
- Chelsea School of Art, Printing and Illustration
- Exhibited at the Rotunda Gallery, The Roundhouse, The Place, Studio Space, Royal Academy of Arts and Sadlers Wells

A long-standing preoccupation with dancers and performers and the depiction of architectural, landscape and figurative themes

**Rhonda Whitehead**

- 1986 Solo show, Minorities Gallery, Colchester
- Group show, Lamont Gallery, London
- 1987 Group show, Curwen Gallery, London
- 1988 Solo show, Crown Reach Gallery, London
- 1989 *Ways of Telling*, Mostyn Gallery, Llandudno and tour
- Critics Space 5*, Air Gallery, London

**Rosalind Whitman**

- 1970-73 Sheffield School of Art, BA (Hons) Fine Art
- 1973-75 Slade School of Fine Art, Printmaking
- 1987 *Humberstone Print Exhibition*, Hull
- The Leicestershire Exhibition*, Loughborough
- Valpariso School of Law, Indiana
- 1989 *New Orientalists*, Chelsea Manor Studios, London

Other exhibitors include Chris Bledowski, Ian Breakwell, Robert Britten, Michael Buhler, Anne Cloudeley-Thompson, John Keane, Peter Liddell, Alison Neville, Harry Philbrick, Paula Rego, Perry Roberts, Andrew Ryder and Julian Williams

# Britannia Works (SPACE)

Dace Road, London E3  
Telephone: 01-985 0664  
14-15 October/1-8pm  
(preview 13 October 7-10.30pm)

**Julie Allen** (b. 1960)

- 1977-79 Hertfordshire College of Art and Design
- 1979-82 North East London Polytechnic, BA (Hons) Fine Art
- 1985 *Whitechapel Open*, Whitechapel Art Gallery, London
- 1986 *Camden Annual*, Camden Arts Centre, London
- Works on Paper*, Carlile Gallery, London
- 1987 Solo show, Carlile Gallery, London

**Saleem Arif** (b. 1949)

- 1969-72 Birmingham College of Art
- 1972-75 Royal College of Art
- 1987 Solo show, Winchester Art Gallery
- Solo show, Axiom Gallery, Cheltenham
- 1988 Solo show, Plymouth Arts Centre
- Solo show, Anderson O'Day Gallery, London

**Maurice Blik**

Exhibitions include group and solo shows in Great Britain and USA

Work is bronze ranging in size from domestic to large heroic pieces

**Martyn Brewster** (b. 1952)

- 1970-71 Hertfordshire College of Art and Design
- 1971-75 Brighton Polytechnic
- 1977 Eastern Arts Award
- 1987 Solo show, Woodlands Art Gallery, London
- 1988 *Shadows and Light*, Thumb Gallery, London
- Solo show, Bede Gallery, Jarrow

**Sandra Buckett**

- 1985 Solo show, Art Show, London
- Solo show, Prescotts, Sussex

- 1988 *Women and Water*, Odette Gilbert Gallery, London
- Open studio, Norfolk House
- 1989 Solo show, Quay Arts Centre, Newport

**Rachel Garfield** (b. 1963)

- 1982-85 North East London Polytechnic, BA (Hons)
- 1987 Group show, Union Chapel, London
- Open Exhibition*, Ben Uri Art Society, London
- Group show, Patricia Knight Gallery, London
- 1988 *Vanda Garvey, Rachel Garfield, Art in the Park*, Walthamstow, London
- Arteast Collective Group Show*, Preston Arts Centre

**Simon Granger**

- 1973-79 Slade School of Fine Art
- 1984-85 Artists' Placement, Aycliffe Hospital, Co. Durham
- 1985-89 Visiting lecturer at Falmouth and Newcastle Polytechnic
- 1986-89 Commissions for Harold Wood Hospital and British Rail
- 1988 *Whitechapel Open*, Whitechapel Art Gallery, London

Work in collections of Arts Council of Great Britain, Northern Arts and Rank Zerox

**Paul Green** (b. 1951)

Educated at Maidstone, Cardiff and Slade School of Fine Art

**Susanna Heron** (b. 1949)

- 1977 Awarded UK/US Bicentennial Arts Fellowship
- 1985 Solo show, Whitechapel Art Gallery, London
- 1986 Solo show, Plymouth Arts Centre
- 1988 Solo show, The Showroom, London
- 1989 Solo show, Camden Arts Centre, London
- Awarded The Thornton Bequest (ACGB)

**Maggie Jennings** (b. 1955)

- 1979-82 Bristol Polytechnic BA (Hons)
- 1982-83 Chelsea School of Art, MA
- 1988 *5th Biennial of European Graphic Art*, Heidelberg, West Germany and tour
- Solo show, Kerrin Lyons Gallery, London
- 1989 *Ideas of Greece*, Fine Arts Society, London

**Ian Jones** (b. 1947)

- 1975-78 Birmingham Polytechnic, BA (Hons)  
 1979-82 Royal College of Art, MA  
 1988 Solo show, Camden Arts Centre, London  
*Athena Art Awards*, Barbican Centre, London  
 1989 Solo show, Anderson O'Day Gallery, London  
*Images of Paradise*, Harewood House, Yorkshire

**Tam Joseph**

- 1986 *Observers are Worried*, Shaw Theatre, London  
 1988 Solo show, Newlyn Orion, Penzance  
 Solo show, *Big Yellow*, Bedford Hill Gallery, London  
 1989 Solo show, Smith Art Gallery, Stirling  
 Work in collections of Arts Council of Great Britain and Contemporary Art Society

**Heather Lisbon** (b. 1960)

- 1979-82 Leeds University, BA (Hons)  
 1983-84 Chelsea School of Art, MA  
 1988 *Where the Flesh Meets Fruit*, Air Gallery, London  
*Life's Eye*, Ben Uri Art Society, London  
 1988-89 Air Gallery Printmaker in Residence, Islington Green School

**Paul Norton**

- 1984 Lowick House Printmakers Residency  
 1986 Solo show, Tom Allen Centre, London  
*Chimera*, Osborne Gallery, London  
 Christie's Contemporary Art Galleries Award  
*Summer Exhibition*, Royal Academy of Arts, London  
 1989 *Beasts*, Homerton Hospital, London

**Roy Pickering** (b. 1954)

- 1970-73 Mansfield College of Arts  
 1973-76 Birmingham Polytechnic  
 1984 Usher Gallery, Lincoln  
 Birmingham Polytechnic  
 1987-88 Artist in Residence, William Morris School, London  
 1989 Group show, Vortex Gallery, London

**Nicholas Snelling**

- 1974-78 Brighton Polytechnic, BA (Hons)  
 1979-80 Chelsea School of Art, MA  
 1987 *Drawings of Seville*, Everyman Cinema, London  
 1989 *Line-Art*, London

**Judith Symons**

- 1987 Union Chapel, London  
 Patricia Knight Fine Art, London  
 1988 Open studio, Britannia Works  
 Ben Uri Art Society, London  
 Work in collections in Great Britain, Japan and Switzerland

**Ruth Weinberg** (b. 1954)

- 1974-79 Falmouth School of Art  
 Winchester School of Art  
 1979 *Amnesty International Sculpture Exhibition*, Institute of Education, London  
 1987 *Small Works*, Patricia Knight Gallery, London  
 1988 *Life's Eye*, Ben Uri Art Society, London  
 1989 *3 Arrows in the Cheek*, The Winchester Gallery

**Emma Withers** (b. 1959)

- 1979-82 Middlesex Polytechnic, BA (Hons)  
 1986-88 Goldsmiths' College, MA  
 1986 *Winter Show*, Mercury Gallery, London  
 1988 *MA Degree Show*, Goldsmiths' College Gallery, London  
 1989 Knapp Gallery, London  
*Critics Choice 5*, Air Gallery, London

**Brian Wood** (b. 1954)

- 1973-76 Canterbury College of Art  
 1981 Solo show, Beauchamp College, Leicester  
 1983 *Three Midland Artists*, Derby  
 1988 Solo show, Vortex Gallery, London  
 1989 Group show, Vortex Gallery, London  
*Critics Choice 5*, Air Gallery, London

**Frederick Yocum** (b. 1955)

- 1986 *The Spirit of London Painting Competition*, London  
 Two person show, Southwark Gallery, London  
 1988 *New Realists*, Berkeley Square Gallery, London  
 Open studio, Britannia Works  
 1989 *Ways of Telling*, Mostyn Gallery, Llandudno and tour  
*Critic's Choice 5*, Air Gallery, London

Other exhibitors include Anne Tockwell

# Cable Street Studios

Thames House, 566 Cable Street, London E1  
 Telephone: 01-790 0674/790 1390  
 21-24 September/2-8pm  
 (preview 20 September 6-9pm)

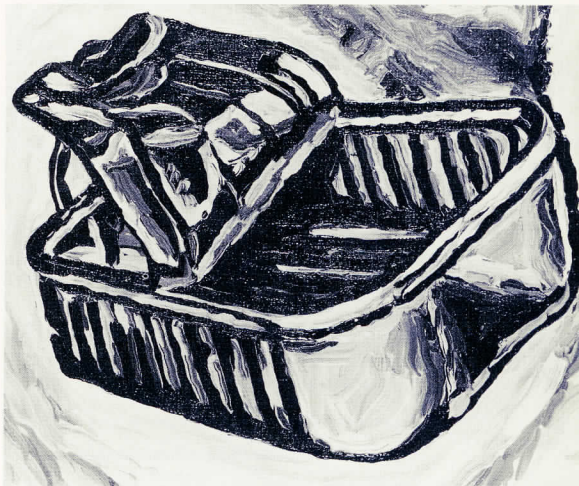
**Brian Ayling** (b. 1956)

- 1975-76 Exeter School of Art and Design  
 1976-79 Birmingham Polytechnic, BA (Hons)  
 1978 Sir Whitworth Wallis Trust (1st prize winner)  
 1979 Sir Whitworth Wallis Trust (1st prize winner)  
 1982 *John Moores Liverpool Exhibition*, Walker Art Gallery  
 1985 Solo show, Air Gallery, London

**Peter Bond** (b. 1961)

- 1981-83 Wimbledon School of Art, BA (Hons)  
 1985-88 Director of Diverse Alternatives Multi Media Workshop  
 1986 Group show, Kimberlin Hall, Leicester  
 Gallery Imago, San Francisco  
 1988 Costume and set designer for *Ubu Roi*, Latchmere Theatre, London  
 1988-89 Part-time lecturer at Leicester Polytechnic

*Simon Granger (Britannia Works), 'Can', oil on paper, 16 x 14cm*



**Louise Cattrell** (b. 1957)

- 1975-80 Dundee College of Art  
 1980-83 Royal College of Art  
 1980 Solo show, Dudhope Arts Centre, Dundee  
 1983 John Minton Award  
 1985 Solo show, Peterborough City Art Gallery  
 1989 Group show, Christopher Hull Gallery, London

**Simon Crawford** (b. 1959)

- 1978-81 Nottingham University, BA (Hons)  
 1981 Nottingham University Jubilee Salon  
 1985 Graduated from Byam Shaw School of Art  
 James Byam Shaw Painting Prize

**Lucille Dweck** (b. 1963)

- 1981-82 St. Martin's School of Art  
 1982-85 Byam Shaw School of Art  
 1983-85 Awarded scholarship place at Byam Shaw School of Art  
 1986 Group show, The Crypt Gallery, London  
 1986-87 Group shows, Mario Flecha Gallery, London  
 1988 *The Immaculate Conception*, The Young Unknowns Gallery, London

**Stewart Ganley** (b. 1946)

- 1968-74 Hammersmith College of Art, London  
 1980 Solo show, 161 Gallery, London  
 1985 Solo show, Woodwharf Gallery, London  
 1986-87 Artist in Residence, Mile End Hospital, London  
 1987 *The South Bank Picture Show*, Royal Festival Hall, London  
 1988 Group show, Merz Contemporary Art Gallery, London

**James Judge** (b. 1958)

- 1982-85 Byam Shaw School of Art  
 1985 Richard Ford Award  
 1986 Group show, The Crypt Gallery, London  
*South London Open*, South London Art Gallery  
 1987 The Crypt Gallery, London  
 1988 *Constable Druce Exhibition*, Camden Arts Centre, London

**Putrisha Lawler** (b. 1959)

- 1979-82 Middlesex Polytechnic, BA (Hons)  
 1982 *British Drawing*, Hayward Gallery, London

- 1983 *Whitechapel Open*, Whitechapel Art Gallery, London  
 1983-86 Royal College of Art, MA  
 1988 *Romantic Visions*, Camden Arts Centre, London  
 1989 *Ways of Telling*, Mostyn Gallery, Llandudno and tour

**Richard Lewsey** (b. 1961)

- 1979-82 Camberwell School of Fine Art  
 1984 Group show, Royal Free Hospital, London  
 1986 BADA Exhibition  
 1988 Open studio, Cable Street Studios  
 Group show, Sedgwick Centre, London  
 1989 Campaign for Artistic Freedom

**Mary Mathieson** (b. 1963)

- 1983-86 Brighton Polytechnic, BA (Hons)  
 1984 *European Bookbinding*, Brighton Polytechnic  
 1985 *Readers Digest Young Illustrators*, Smiths Galleries, London  
 1986 *Well Travelled*, Gardner Centre, Sussex University  
 1986-89 Royal College of Art, MA  
 1987 *Folio Society Illustration Awards*, Royal College of Art, London

**Elisabeth Merriman** (b. 1963)

- 1982-85 Canterbury College of Art, BA (Hons)  
 1985-87 Slade School of Fine Art  
 1987 *Contemporary Art Society Art Market*, Smiths Galleries, London  
 Group show, Porl Porl Gallery, Leeds  
 1989 *Leicestershire Collection for Schools and Colleges Exhibition*, Loughborough  
*Interior Design International Exhibition*, Olympia, London

**Robert Milne** (b. 1964)

- 1982-83 Canterbury College of Art  
 1983 Group show, Kingston Village Hall  
 Group show, Wimbledon School of Art  
 1983-86 Wimbledon School of Art  
 1986 Group show, Wimbledon School of Art  
 1987 Solo show, Wapping Sports Centre, London

**Janet Owen** (b. 1965)

- 1983-84 Central School of Art  
 1984-87 Canterbury College of Art  
 1987 *Young Masters 1987*, The Showroom, London

- 1988 *Christmas Show*, The Solomon Gallery  
 1989 *Ways of Telling*, Mostyn Gallery, Llandudno and tour  
 Merz Contemporary Art, London

**Sarah Perritt** (b. 1961)

- 1980 The Kiln Gallery, Farnham Maltings  
 1984 *Spirit of London*, Royal Festival Hall, London  
 1985 *Athena Art Awards*, Barbican Centre, London  
 1984-86 Elizabeth Greenshields Awards for Painting  
 1986 *Young Masters*, The Solomon Gallery  
 1988 Open studio, Cable Street Studios

**Marianne Perry-Wells**

- 1984 Commission, Bellevue Hospital, New York  
 1987 Artist in Residence, Nyack College, New York  
 1988 Solo show, First Street Gallery, New York  
*Women and Watercolour*, Transco Energy Corporation, Texas  
 1988-89 Group show, Anna-Mei Chadwick Gallery, London  
 Work in collections of American Embassy, Dublin and in USA

**Jackie Staite**

- 1974-75 Norwich School of Art  
 1975-78 Middlesex Polytechnic, BA (Hons)  
 1985 Group show, Frame Factory, London  
 1988 Group show, Lauderdale House, London

**Paul Staite** (b. 1950)

- 1969-70 Isleworth Polytechnic  
 1971-72 Trinity and All Saints Colleges of Further Education  
 1982-85 Director of London Historic  
 1983 Solo show, Cockpit Theatre, London

**Tatiana de Stempel**

- 1977-80 Wimbledon School of Art  
 1980 Theatre Exhibition, Wimbledon School of Art  
 1983 Group show, Brixton Artists Collective, London  
 1985 Group show, Gallery Imago, San Francisco  
 1987 Group show, Gallery Imago, San Francisco  
 Commission, Berkeley, California

**Sandor Szenassy** (b. 1950)

- 1978-81 Stourbridge College of Art  
 1981 *New Contemporaries*, Ikon Gallery, Birmingham  
 1986 Solo show, Central Space Gallery, Olympia, London  
 Group show, Cable Street Studios



- 1987 Group show, Patricia Knight Gallery, London
- 1988 Participated in and organised highly successful Cable Street Open Studios

**Ivel Weihmuller** (b. 1954)

- 1972-75 University of Rosario, Argentina
- 1980 Solo show, Palatina Gallery, Argentina
- 1983 Solo show, Estevez Vilas Gallery, Cincinnati
- 1985 *Latin American Artists*, Sotheby Parke Bernet, New York
- 1987 *The Icon Show*, Mario Flecha Gallery, London

Work in many collections including Grande Rapids Art Museum, Michigan

**Lucie Winterson** (b. 1961)

- 1980-83 Central School of Art and Design, BA (Hons)
- 1985 Clarendon Gallery, London
- 1988 Belzaliel Gallery, London  
*Christmas Show*, Christopher Hull Gallery, London
- 1989 Solo show, Christie's Fine Arts College, London  
*Ways of Telling*, Mostyn Gallery, Llandudno and tour

**Jacqueline Wood** (b. 1961)

- 1981-84 Coventry Polytechnic, BA (Hons)
- 1984-86 Photographic Assistant/Painter, London
- 1986-87 Visiting Artist, Tokyo University Hospital Day Care Centre
- 1987-88 Travelled through Hong Kong, China, Russia, Romania, Turkey, India

Exhibited in *Midland View Two*, *The Leicestershire Exhibition*, *Stowells Trophy*, *Wolves Come to Coventry*, *Coventry Goes to Wolves*, *Coventry Open*

Other exhibitors include Joe Allen, Archer, Jonathan Barnes, David Barron, Ramona Belcher, Nick Bolton, Belinda Channer, John Coles, Jane Coulston, Claire Courtenay, Marissa Davies, Jane Deakin, Mario Demetriades, Everott, Debbie Frome, Jason Gibilaro, Daniel Gibson, Stephen Gillatt, Margaret Haddon, John Hall, Alan Hardcastle, Andrea Harrison, Karen Hirst, Wendy Hodge, Len Hodgson, Louisa Hutchinson, Ray Kilby, Sophie Knight, Francesca La Nave, Richard Lorrinan, Michael Lynch, Ian Macauley, Gordon McHarg, David Miles, Simon Morley, Nowers, Humphry Ocean, Ian Poulton, Amanda Prowse, Quinnell, Andrew Rowson, Giorgio Sadotti, Maggie Smith, Piyawan Suwendecho, Andrew Torr, Arthur Turley, Deborah Vannozi, Mark Wahlwender, Rick Walker, Jo Walter and Rachel Winter

# Carpenters Road (ACME)

105 Carpenters Road, London E15  
Telephone: 01-519 5240/01-519 5808/01-519 8991/01-981-6811  
20-22 October/Friday 2-6pm, Saturday/Sunday 11am-6pm (preview 20 October 6-9pm)

**Ines Amado**

- 1975-79 Winchester School of Art
- 1979 Guildhall, Winchester  
Havant Arts Centre
- 1980 St. John's Gallery, Portsmouth
- 1981-87 Taught at Lisbon School of Art, Portugal
- 1989 Commission, Residential Development, London

**Justin Bailey**

- 1987 *The Icon Show*, Mario Flecha Gallery, London
- 1988 Solo show, Actors Institute Gallery, London

My work is green

**Sue Baker** (b. 1958)

- 1974-79 Harrow School of Art
- 1984 *Fertile Eye*, Brixton Art Gallery, London
- 1985 *Cheek by Jowl*, The Showroom, London
- 1986 *Icons, Portraits and Colours*, Smiths Galleries, London
- 1988 *Devils in Skirts*, Krok O Dil Gallery, London  
*Women Artists Slide Library 1989 Diary Show*, London

**Fiona Banner** (b. 1966)

- 1985-86 Camberwell School of Arts and Crafts
- 1986-88 Kingston Polytechnic
- 1988 Jointly created *Whose Afraid of Nicola Jacobs*, Unit 17, London
- 1989 Research into nuclear submarines for *Silent Warriors* project  
Group show, TDA, London

**Philip Berczuk** (b. 1962)

- 1980-84 Duncan of Jordanstone College of Art, BA (Hons)
- 1985-86 Chelsea School of Art, MA

- 1988 *Prima Materia*, Flaxman Gallery, London  
*Royal Overseas League Annual Exhibition*, London  
*A Celebration of the Winter Solstice*, Creaser Gallery, London
- 1989 *Art '89*, Design Centre, London

**James Blundun** (b. 1957)

- 1976-77 Chelsea School of Art
- 1977-80 Canterbury College of Art
- 1980 *Stowells Trophy*, Royal Academy of Arts, London
- 1981 Festival Theatre, Malvern
- 1984 Unit 7, London
- 1986 Diorama, London

**Allan Boston** (b. 1951)

- 1975 *Serpentine Summer Show 1*, Serpentine Gallery, London
- 1976/80/85 *John Moores Liverpool Exhibition*, Walker Art Gallery (prizewinner 1985)
- 1978/84/86/87/88 *Whitechapel Open*, Whitechapel Art Gallery, London
- 1979 *Tolly Cobbold Eastern Arts National Exhibition*
- 1985 *Cleveland International Drawing Biennale* (prizewinner)
- 1988 Solo show, Chisenhale Gallery, London

**Jean Buckland** (b. 1950)

- 1982-85 Chelsea School of Art
- 1979 *Uses of Drawing*, Whitechapel Art Gallery, London
- Solo show, Camden and Westminster Teachers Centre
- 1985 Included in *Exploring Female Imagery* by Annabel Nicholson, Battersea Arts Centre, London
- 1986 Group show, Gallery 111, London
- 1988 Open studio, Carpenters Road

**Jose Buitrago** (b. 1954)

- 1982 National Art Fuenlabrada Award, Madrid
- 1984 *Madrid, Madrid, Madrid*, Centro Cultural de la Ville, Madrid
- 1985 Group show, Reynold Keer Gallery, New York  
Travelling scholarship to New York
- 1986 Solo show, Lis House, Salamanca
- 1988 Solo show, Exhibition Room, Clock House, Madrid



Julie Umerle (*Carpenters Road*), 'Reality', oil on canvas, 152 × 137cm

**Stephen Buller** (b. 1958)

- 1980-83 Manchester Polytechnic, BA (Hons)
- 1987 Solo show, Sayat Nova Gallery, London
- Solo show, Actors Institute, London
- Solo show, Dance Attic Studios, London
- 1988 Solo show, Framers Gallery, London
- Solo show, Wigmore Hall, London

**Henny Burnett** (b. 1962)

- 1982-85 Edinburgh College of Art, BA (Hons)
- 1985-86 Edinburgh College of Art
- 1987 The Blenheim Gallery, London
- 1988 Bezzalieu Gallery, London
- Brewhouse Theatre and Arts Centre, Taunton
- Andrew Grant travel scholarship, New York

**Charles Burns** (b. 1961)

- 1981-84 Wolverhampton Polytechnic, BA (Hons)
- 1983-84 Tim Turner travelling scholarship
- 1985 *The Wolverhampton Artists Group*, Wolverhampton Art Gallery
- 1986 *The Waterfall*, Merridale, Wolverhampton
- 1987 *Two Views*, Wapping Sports Centre, London

- 1989 *Easter Exhibition*, Blackheath Gallery, London

**Jane Bustin** (b. 1964)

- 1986 Group show, Aspex Gallery, Portsmouth
- 1987 *Hunting Group Art Prizes*, Mall Galleries, London
- Group show, Women's Eye Gallery, London
- Solo show, MGM Studios, London
- 1989 Group show, Blenheim Gallery, London
- The Sacred in Art*, Long and Ryle Art International, London

**Judy Clark**

- 1968-71 Portsmouth Polytechnic, Dip AD
- 1971-73 Slade School of Fine Art
- 1972 *British Drawing 1952-72*, Angela Flowers Gallery, London
- 1973 *Platform '73*, Museum of Modern Art, Oxford
- 1974 *Critics Choice*, Arthur Tooth and Sons, London
- 1984 *View from my Window*, Angela Flowers Gallery, London

**Niki Collier** (b. 1963)

- 1984-87 Camberwell School of Art and Crafts, BA (Hons)
- 1985 *Thames and Hudson Book Prize Exhibition*, South London Art Gallery
- 1988 *Leicestershire County Education Authority Painting Exhibition*
- 1988 Open studio, Carpenters Road
- 1989 *Women's Eye*, Lauderdale House, London
- Solo show, Everyman Cinema, London

**Denise de Cordova** (b. 1957)

- 1977-80 Brighton Polytechnic, BA (Hons)
- 1980-83 Royal College of Art, MA
- 1988 *Sculpture in the Cloister*, Jesus College, Cambridge
- Solo show, The Showroom, London
- Contemporary Portraits*, Flowers East, London
- 1988-89 Public sculpture for council buildings, Bury St. Edmunds

**Kate Davis** (b. 1960)

- 1979-82 Falmouth School of Art
- 1983-86 Slade School of Fine Art
- 1988 Artists Award, Whitechapel Art Gallery, London

- 1989 *Sculpture Open*, The Minorities, Colchester
- Sculpture in Paradise*, Chichester Cathedral
- Solo show, Whitechapel Art Gallery, London

**Heather Deedman** (b. 1960)

- 1981-84 Stourbridge College of Art, BA (Hons)
- 1984-86 Slade School of Fine Art
- 1986 *New Contemporaries*, Institute of Contemporary Arts, London and tour
- 1986-87 Artist in Residence, Ravenor School, London
- 1988 *Death*, Cambridge Darkroom/Kettles Yard, Cambridge
- Two person show, Towner Art Gallery, Eastbourne

**Harrison Dix** (b. 1941)

- 1967 *New Arts Centre Exhibition*, London
- 1987 *Riverside Open*, Riverside Studios, London
- State of the Nation Exhibition*, Herbert Art Gallery, Coventry
- 1988 *Public Arts Projects*, The Planning Shop, Leeds
- Six Painters*, Pyramid Arts, London
- 1989 Bristol – Bath Railway Commission

**Robert Doswell** (b. 1960)

- 1979-85 Slade School of Fine Art
- 1980 Sir William Coldstream Prize
- 1982 Maria Reischitz Award
- 1987 *The Icon Show*, Mario Flecha Gallery, London
- 1988 Group show, Hampstead Theatre, London
- Group show, Diorama, London

**Frances Edmonds** (b. 1953)

- 1982 *Whitechapel Open*, Whitechapel Art Gallery, London
- 1983 *Cleveland 6th International Drawing Biennale*
- 1984 *Midland View 3 Exhibition*, Midland Group, Nottingham
- 1985 *Spirit of London*, Royal Festival Hall, London
- 1987 *Athens Art Awards*, Barbican Centre, London
- 1989 Solo show, Whitechapel Library, London

**Gethin Evans** (b. 1954)

- 1979 David Murray Landscape Award
- 1982 *British Drawing*, Hayward Gallery, London
- 1983 *Cleveland 6th International Drawing Biennale*

- 1987 *Summer Show of Gallery Artists*, New Academy Gallery, London
- 1988 National Eisteddfod of Wales (prizewinner)
- 1989 *Ways of Telling*, Mostyn Gallery, Llandudno and tour

**Sharon Fuller**

- 1985-86 Placement at Brockwell Park, London
- 1986 *Photography – Class of '86*, Mall Galleries, London
- 1987 *Breathing Spaces*, Camerawork, London
- 1988 *There are more ways through the woods than one*, The London Ecology Centre, London
- Cartier Foundation Finalist, Lynne Ster Gallery, London
- 1989 *Tweede Biennale van Kunstscholen in Europa*, Hessunhuis, Antwerp

**Marcus Grey** (b. 1960)

- 1977-79 Ontario College of Art, Toronto
- 1979-84 Slade School of Fine Art
- 1984 *Canadian Artists in London*, Royal College of Art, London
- 1985 *Leicester Schools Show*
- 1988 Group show, Brinkstraße Gallerie, Cologne

**David Griffiths** (b. 1961)

- 1981-84 Falmouth School of Art, BA (Hons)
- 1984-86 Slade School of Fine Art
- 1987 *Riverside Open*, Riverside Studios, London
- 1988 *Make You Believe*, Screenworks Gallery, Portsmouth
- 1989 *Proportionate Play*, Third Eye Centre, Glasgow
- New Works April '89*, London Film Makers Co-op

**David Gryn** (b. 1963)

- 1983-86 St. Martin's School of Art
- 1986 *Summer Show*, Osbourne Gallery Los Angeles Art Fair
- 1987 Bath Contemporary Art Fair (Rebecca Hossack Gallery)
- 1988 *Big Heads*, Diorama Gallery, London
- Ben Uri Art Society, London

**Paula Haughney** (b. 1950)

- 1978-81 Portsmouth Polytechnic, BA (Hons)
- 1981-82 Eastern Illinois University
- 1983-84 Middlesex Polytechnic

- 1989 Solo show, Dannlann De Bairread Gallery, London
- Commission for Homerton Hospital, London

**Michael Hempstead** (b. 1956)

- 1975 Sir Alfred Munnings Award
- 1975-78 Camberwell School of Art, BA (Hons)
- 1978-80 Slade School of Fine Art
- 1988 Chigago Art Fair, USA
- Solo show, Janus Avivson Gallery, London

Work in private collections in England, Germany and USA

**Stephen Hepworth** (b. 1963)

- 1981-84 Southwark College, London
- 1984-87 Brighton Polytechnic
- 1987 Jacob Mendleson Scholarship
- 1988 *Outlook*, Diorama, London
- 1988-90 Goldsmiths' College
- 1989 *Six British Artists, Selected Work*, Rijksakademie Gallery, Amsterdam

**Tim Higgins** (b. 1961)

- 1980-83 Middlesex Polytechnic
- 1985 Vortex Gallery, London
- 1987 Galerie Endart, Berlin
- Galerie Klenzstrabe, Munich
- 1988 Islington Art Festival, London

**Shareena Hill** (b. 1964)

- 1982-85 Trent Polytechnic, Nottingham, BA (Hons)
- 1985-86 Chelsea School of Art, MA
- 1987 Elizabeth Greenshields Foundation Award
- Solo show, The Marriott Rooms, Cheshire
- Small Works*, Patricia Knight Gallery, London
- 1988 *Summer Exhibition*, Royal Academy of Arts, London

**John Hooper** (b. 1939)

- 1958-62 Camberwell School of Art and Crafts
- 1962-65 Royal College of Art
- 1965-69 French Government Scholarship, Paris
- 1985 *The Last Wapping Show*, London
- 1987 Solo show, Central Space, London
- Summer Show*, Jariwala Gallery, London

**Anthony Hull** (b. 1964)

- 1983-86 Chelsea School of Art, BA (Hons)
- 1986 *Class of '86, London Institute Show*, Royal Festival Hall, London
- Chelsea Box Print*, Angela Flowers Gallery, London
- 1986-88 Slade School of Fine Art
- 1987 *Whitworth New Contemporaries*, Whitworth Art Gallery, Manchester
- National Printmakers Exhibition*, *Printmakers Council and Whatman Papers*, Royal Festival Hall, London

**Charlie Jeffries** (b. 1960)

- 1984-88 Canterbury College of Art, BA (Hons)
- 1986-88 *St. Augustine's Gardens Sculpture Show*, Canterbury
- 1987 *3 Sculptors*, Darwin College Gallery, Canterbury
- 1989 *Dress Dance Drawings*, The Place Theatre, London
- En Catalunya*, Galeria Tom Maddock, Barcelona
- Collaboration with Aletta Collins on *Forbidden Fruit*, The Place Theatre, London

Philip Berczuk (*Carpenters Road*), 'Fission', oil on canvas, 183 × 152 cm



**Lucy Jones** (b. 1955)

- 1977-79 Camberwell School of Art and Crafts, BA (Hons)  
1979-82 Royal College of Art, MA  
1982-84 Rome Scholarship  
1986 *Canvass*, John Hansard Gallery, Southampton  
1987 Solo show, Angela Flowers Gallery, London

Work in collections of Arts Council of Great Britain and Metropolitan Museum of Art, New York

**Michael Jones** (b. 1955)

- 1970-75 Rochdale College of Art  
1975-78 Camberwell School of Arts and Crafts, BA (Hons)  
1980 *Ten Abstract Artists*, Picture Gallery, London  
1986 The Crypt Gallery, London  
1987 *Triangle Exhibition*, Pine Plains, USA  
1988 *Christmas and New Year Exhibition*, The Cafe Gallery, London

**Roger Kite** (b. 1947)

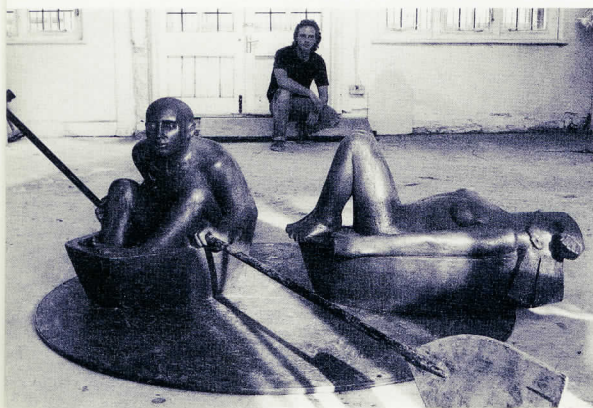
- 1970-74 Hornsey College of Art, Dip AD  
1974-75 Chelsea School of Art, MA  
1983 Galleria Katariina, Helsinki, Finland  
1987 *Athena Art Awards*, Barbican Centre, London  
1988 *Death*, Cambridge Darkroom/Kettles Yard, Cambridge

Work in collections of Arts Council of Great Britain and Leicestershire Education Authority

**Katharine MacCarthy** (b. 1957)

- 1977-88 Brighton Polytechnic

*André Wallace in his studio at Carpenters Road*



- 1979 *New Contemporaries*, Institute of Contemporary Arts, London  
1980-83 Royal College of Art  
1985-86 Artist in Residence, Thomas Fairchild School, London  
1988 Group show, Royal Institute of British Architects, London  
1988/89 *Whitechapel Open*, Whitechapel Art Gallery, London

**Rose Ann McGreevy**

- 1976-79 Ulster College of Art, BA (Hons)  
1979-80 Chelsea School of Art, MA  
1986 *Drawings*, City Artists Gallery, London  
1987 *Off the Map*, Chisenhale Gallery, London  
*Big Drawings*, Radio City, Coventry  
1989 *Jouvert* travelling print show

**Elizabeth Murry**

- Camberwell School of Art and Crafts, BA (Hons)  
1984 Thames and Hudson Drawing Prize  
1987 *South London Open Show*, South London Art Gallery  
Group show, Woodlands Art Gallery, London

**David Oates** (b. 1954)

- 1985-86 Founder member of City Artists' Association  
1986 Solo show, East Gallery, London  
1987 *Art After Hours*, Limelight Club, London  
*Whitechapel Open*, Whitechapel Art Gallery, London  
1989 Group show, The Chapter House, London  
Teaching at Berkshire College of Art

**Bill Parker**

- 1973-76 Wolverhampton Polytechnic  
1977-89 Working and teaching in East London  
Sporadic visits to USA

**Jacqueline Pennell** (b. 1961)

- 1981-84 Goldsmiths' College, BA (Hons)  
1984 *Pick of the Graduates*, Christie's Inaugural Show, London  
1986 *New Contemporaries*, Institute of Contemporary Arts, London and tour  
*Fresh Art*, Barbican Centre, London  
1988 Commission for Coca-Cola and Schweppes building, Uxbridge  
1988-89 Visiting lecturer at Bedford College of Higher Education

**Julian Petrie** (b. 1945)

- 1983 Matilda Street Gallery  
1988 Group show, 15 Eaton Square, London

**Gillian Potkins** (b. 1961)

- 1980-83 Central School of Art and Design, BA (Hons)  
1981 Bursary to study painting, Nancy, France  
Queen Mary Scholarship Award  
1983 *Hunting Group Art Prizes*, Mall Galleries, London  
1987 *The Icon Show*, Mario Flecha Gallery, London  
1988 *The Invisible Man*, Goldsmiths' College Gallery, London

**Catherine Purves**

- 1980-84 Central School of Art and Design, BA (Hons)  
1984 *Pick of the Graduates*, Christie's Inaugural Show, London  
1988 *Direct Design Show*, Horticultural Halls, London  
1989 *Light Fantastic Exhibition*, Geffrye Museum, London

**Anita Ronke**

- 1979-81 Gloucester College of Art and Design  
1986 Exhibited at Dartington College of Art and Design, Devon  
1988 *Homage to a Square*, Flaxman Gallery, London  
Open studio, Carpenters Road

**Rosemary Smith**

- 1972 Serpentine Gallery, London  
Sculpture in Holland Park, London  
1975 Warwick Gallery  
1985 *Summer Exhibition*, Royal Academy of Arts, London  
1987 *The London Group*, Royal College of Art, London  
Square Gallery, London

**Pete Smithson** (b. 1956)

- 1975-78 Goldsmiths' College, BA (Hons)  
1984 *Paper Trails*, Bluecoat Gallery, Liverpool  
1984-88 *Whitechapel Open*, Whitechapel Art Gallery, London  
1986 *Pete Smithson — Sculpture*, Dean Clough Contemporary Art Gallery, Halifax  
1987 *Charioteers and Arabian Nights*, Wrexham Library Arts Centre  
1988 *Gathering Rites*, The Pitt Rivers Museum, Oxford

**Andrew Stahl**

- 1973-79 Slade School of Fine Art  
1981/83 Solo shows, Air Gallery, London  
1984/88 Solo shows, Paton Gallery, London  
Also exhibited at Laing Art Gallery, Newcastle and in group shows in Great Britain and abroad

Work in collections of Arts Council of Great Britain and Metropolitan Museum of Art, New York

**Andrew Stiff** (b. 1964)

- 1983-86 Chelsea School of Art and Design
  - 1986 Holland Gallery, London
  - 1987 Henley Exhibition Centre
- Several private commissions in New York

**Lawrence Sullivan** (b. 1959)

- 1978-81 Preston Polytechnic
- 1982 North West Arts Award
- 1985 *White Space Open Competition*, London Cleveland Drawing Competition
- 1987 Group show, British Centre, Berlin
- 1988-89 Working as Community Artist

**Margaret Sutton** (b. 1932)

- 1951-54 University of London
- 1983-88 St. Martin's School of Art, BA (Hons)
- 1984 Solo show, Crotchets Chamber Music Club, London
- 1988 Solo show, *Platform*, Palmers Green Library, London
- Solo show, Marylebone Library, London
- 1989 *Underground People*, London Transport Museum, London

**Deb Thomas**

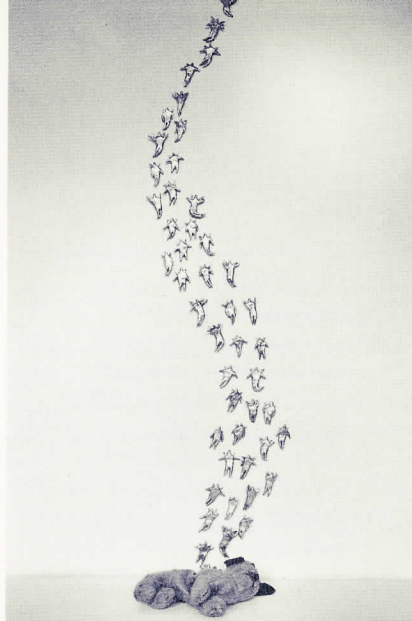
- 1985 *Sculptures into Dance*, Battersea Arts Centre, London
- 1986 GLA Award for performance/installation *Hobbyhorse*
- 1987-88 *Hobbyhorse*, Ikon Gallery, Birmingham and tour
- 1989 *Chandeliers*, Themes and Variations, London

**Janet Tod** (b. 1948)

- 1968-72 Duncan of Jordanstone College of Art
- 1974-75 British Council Award, Belgrade University, Yugoslavia
- 1988 *Identity*, Chisenhale Gallery, London
- Open studio, Carpenters Road
- Group show, Gallery by the Park, Nelson
- 1989 Group show, Printmakers Council, Manchester

**Julie Umerle**

- 1975-78 Falmouth School of Art, BA (Hons)
- 1983 Greater London Arts Award
- 1987 Solo show, Submarine Gallery, London



Heather Deedman (*Carpenters Road*), 'The Death of Albert', installation with cloth, clay and paint

- 1988 Greater London Arts Award
- Solo show, South Hill Park Arts Centre, Bracknell
- Solo show, Barbican Centre, London

**André Wallace**

My concerns are with human images and the combination of human and formal relationships. I would like the viewer to imagine what has, is, or is about to happen in the work.

The series of sculptures I am presently working on are based upon drawings done at the Serpentine boating lake; these sculptures can be situated on land or floated on water.

**Jonathan Waller**

- 1980-83 Lanchester Polytechnic
- 1984-85 Chelsea School of Art
- 1986 Solo show, Paton Gallery, London
- 1988 Solo show, Paton Gallery, London
- The New British Painting*, Cincinnati and tour
- 1989 *Artistic Freedom*, The Young Unknowns Gallery, London

**Robert West** (b. 1962)

- 1982-85 Leeds Polytechnic
- 1986 Solo show, Phoenix Arts Centre, Leicester
- Royal Overseas League Exhibition*, London
- 1987 Solo show, Castle Museum, Nottingham
- 1988 Solo show, Stamford Arts Centre
- Sport in Print*, Printmakers Council touring exhibition

**Stella Whalley** (b. 1958)

- 1977-80 Harrow School of Art

- 1981-82 Central School of Art
- 1985 *Codes of Practise*, Pentonville Gallery, London
- 1987 Miami Print Biennale Revisited
- The Day Book Exhibition*, Smiths Galleries, London
- 1988 *The Maginot Line*, Riverside Studios, London

**Rachel Whiteread** (b. 1963)

- 1982-85 Brighton Polytechnic, BA (Hons)
- 1985-87 Slade School of Fine Art
- 1988 Solo show, Carlile Gallery, London
- 1989 *Concept '88, Reality '89*, University of Essex Gallery
- 1989 Teaching on education workshops at Serpentine Gallery
- Part-time teaching on degree courses

**Jane Williams** (b. 1964)

- 1982-83 Bedford College of Higher Education
- 1983-86 Norwich School of Art, BA (Hons)

Other exhibitors include Steven Alley, Greg Catlin, Randal Cooke, Liz Davis, Nepomuk Galler, Laura Godfrey Issiacs, David Johnson, Hiroshi Kinjo, Mike Roff, Paul Rosenbloom, Alistair Skinner, Andrew Smith, Colin Smith, Donald Smith, Dinny Turner, Vee Williams and Michael Windle

# Chilton Street Studios

52 Chilton Street, London E2  
21-22 October/ 11am-5pm (preview 20 October 7-9pm)

**Sarah Hooker** (b. 1962)

- 1986 *Mid Art Open*, Dudley Art Gallery, West Midlands
- 1987 *Manchester Academy of Art Annual Exhibition*, Atheneum Gallery
- Current Work*, Margaret Harvey Gallery, Hertfordshire College of Art and Design
- 1988 *The Small Art Show*, The Square Gallery, London
- 1989 *Third Dimension*, Watermans Art Centre, London

Other exhibitors include Guy Bennington, Corinna Durie, Tommy Gleeson, James O'Dwyer, Anna Park, Ramo Ravella and Louise Soloway

# Chisenhale Studios

64-84 Chisenhale Road, London E3  
 Telephone: 01-981 4518  
 14-15 October/11am-6pm  
 (preview 13 October 2-4pm and 6-8pm)

## Patricia Austin (b. 1954)

- 1973-77 St. Martin's School of Art, BA (Hons)
- 1979-81 Goldsmiths' College, MA
- 1982-85 *Whitechapel Open*, Whitechapel Art Gallery, London
- 1984 *The London Group*, Royal College of Art, London
- 1986 Solo show, Summer Street, Boston  
 Artist in Residence, Boston University

## Edward Chell (b. 1958)

- 1977-81 University of Newcastle-upon-Tyne
- 1985 Placement, Grizedale Forest, Cumbria
- 1987-89 Royal College of Art, MA
- 1988 Solo show, Lanchester Gallery, Coventry  
*Summer Exhibition*, Royal Academy of Arts, London
- 1989 Opening group show, Raab Gallery, London

## Fran Cottell

- 1973-77 University of Reading, BA (Hons)
- 1979-81 Goldsmiths' College, MA
- 1984-86 Research and organisation of *Conceptual Clothing*
- 1986-88 *Conceptual Clothing*, Ikon Gallery, Birmingham and tour
- 1987/88 *Whitechapel Open*, Whitechapel Art Gallery, London
- 1988-89 *Subversive Stitch*, Cornerhouse, Manchester

## Jan Dowman (b. 1942)

- 1975-76 University of New Brunswick, Canada
- 1979-86 Hertfordshire College of Art and Design, BA (Hons)
- 1982 *The London Group*, Camden Arts Centre, London and tour
- 1983 *Six Sculptors*, Great Linford Arts Centre, Milton Keynes
- 1986-87 *In the Making*, Hertfordshire Open Exhibition, Watford Museum

- 1987 *Exhibition One*, University of London Institute of Education

## Mark Fairnington (b. 1957)

- 1986 *Tower blocks, dogs teeth and hot red fire*, Pentonville Gallery, London
- 1987 *Critical Realism* touring exhibition  
*The back garden of earthly delights*, Sue Williams Gallery, London
- 1988 *MA Degree Show*, Goldsmiths' College
- 1989 *Six British Artists, Selected Work*, Rijksakademie Gallery, Amsterdam  
*Territories*, Chisenhale Gallery, London

## John Fuller (b. 1954)

- 1972-73 St. Albans School of Art
- 1973-76 Goldsmiths' College, BA (Hons)
- 1975 *Sculpture '75 ILEA*, Whitechapel Art Gallery, London
- 1976 Paul-Louis Weiller Sculpture competition, Académie des Beaux Arts, Paris
- 1979 Solo show, Hertfordshire College of Art and Design, St. Albans
- 1988 *Contemporary Printmakers Council Print Fair*, Arnolfini, Bristol

## Jon George (b. 1944)

- 1965-68 Falmouth School of Art, BA (Hons)
- 1986 Solo show, Oxford House, London  
 The Furness Museum, Barrow
- 1987 Artist in Residence, Chisenhale Primary School, London  
 Haworth Art Gallery
- 1989 *Landscapes*, Limehouse Library, London

## Joy Girvin (b. 1961)

- 1981-84 Newcastle-upon-Tyne Polytechnic, BA (Hons)
- 1984-87 Royal Academy Schools, London
- 1987/88 *Summer Exhibition*, Royal Academy of Arts, London
- 1988 *The London Group*, Royal College of Art, London  
*The South Bank Picture Show*, Royal Festival Hall, London
- 1989 Solo show, Newcastle Polytechnic Gallery

## John Guest (b. 1955)

- 1985 Moved into Chisenhale Studios  
 ... just putting some more colour into the world

## Emma Gunningham (b. 1957)

- 1976-80 University of Reading, BA (Hons)
- 1980 Solo show, South Hill Park Arts Centre, Bracknell



Chisenhale Studios

- 1982 *Four Painters*, Waterloo Gallery, London
- 1984 *Whitechapel Open*, Whitechapel Art Gallery, London
- 1988 *Identity*, Chisenhale Gallery, London  
 Woodlands Gallery, London

## Sharon Hall (b. 1954)

- 1979-81 Slade School of Fine Art
- 1981 French Government Scholarship
- 1987 Greater London Arts Award
- 1988 *Artist of the Day*, Angela Flowers Gallery, London  
 Chisenhale Gallery, London
- 1989 Picker Lectureship, Kingston Polytechnic

## Kevin Harrison (b. 1953)

- 1971-74 Norwich School of Art
- 1974-75 Chelsea School of Art
- 1984 *International Garden Festival*, Liverpool  
 Commission, Grizedale Forest, Cumbria
- 1985-89 Exhibited several times at Nicholas Treadwell Gallery
- 1987 Air Gallery, London

## Pierre Imhof (b. 1956)

- 1983-86 Middlesex Polytechnic, BA (Hons)
- 1986 Group show, The Mansion House, London  
 Solo show, Sec 52 Gallery, Zurich
- 1988 Solo show, Roevekamp Gallery, Zurich
- 1989 *The Regents Park Boat Show*, New Art Gallery, London  
 Solo show, Sec 52 Gallery, Zurich

## Charlie Johnson (b. 1949)

- 1970-74 University of Reading, BA (Hons)

- 1977-78 Garnett College of Education  
 1978 Solo show, Downshire House, Roehampton  
 1984 *100 Artists*, The Showroom, London  
 1986 *Recent Diversions*, Pennybank Gallery, London  
 1988 *Voluntary Discharge*, Assembly Rooms, Norwich

**Malcolm Jones**

- 1968-71 University of Reading, BA (Hons)  
 1972-73 Chelsea School of Art  
 1973 Group show, Stedelijk Museum, Amsterdam  
 1980 Group show, National Portrait Gallery, London  
 Solo show, ACME Gallery, London  
 1984 *Dreams and False Alarms*, Riverside Studios, London

**Ingrid Kerma**

- 1972-76 University of Reading  
 1982 *Hayward Annual*, Hayward Gallery, London  
 Solo show, Air Gallery, London  
 1985 *Thirty London Painters*, Royal Academy of Arts, London  
 1986 *New Acquaintances*, Fabian Carlsson Gallery, London  
 1987 Solo show, Richard Pomeroy Gallery, London

**Pete Lewis** (b. 1954)

- 1973-76 Hornsey College of Art, BA (Hons)  
 1976-77 Chelsea School of Art, MA  
 1977 *Stowells Trophy*, Mall Galleries, London  
 1987 Solo show, Chisenhale Gallery, London  
 1988 *Riverside Open*, Riverside Studios, London  
 1989 The Showroom, London

**Di Livey** (b. 1946)

- 1964-67 Chelsea School of Art  
 1967-70 Royal College of Art  
 1974 Solo show, La Sala Vincon Gallery, Barcelona  
 1981 *Summer Show 2*, Serpentine Gallery, London  
 1985 *Empty Vessels*, The Winchester Gallery and tour  
 1989 *Sculpture in a Rose Garden*, The Royal National Rose Society, St. Albans

**Penny Machin** (b. 1955)

- 1975 *Northern Young Contemporaries*, Whitworth Art Gallery, Manchester  
 1977 *One Degree Over*, Air Gallery, London  
 1979 *Recent British Painting*, Dallas University, Texas  
 1985 *Out of Time*, Tom Allen Arts Centre, London  
 1988 *Changing Places*, Cafe Gallery, London  
 1988/89 *Whitechapel Open*, Whitechapel Art Gallery, London

**Diane Martin** (b. 1951)

- 1974-77 Central School of Art and Design, BA (Hons)  
 1976 *Stowells Trophy Exhibition*, Royal Academy of Arts, London  
 1984 *Summer Exhibition*, Royal Academy of Arts, London  
 1985 *Heads*, Women's Eye Gallery, London  
 1986 *East End Women Artists*, Lamont Gallery, London  
 1988 *Whitechapel Open*, Whitechapel Art Gallery, London

**Louise McLaren** (b. 1959)

- 1981-84 Canterbury College of Art, BA (Hons)  
 1985 Group show, The Orangery, London  
 1987 Group show, Frame Express, London

I look for the simplest means to express myself and hope to capture some of the 'child' in me and my work

**Vincent Milne**

- 1972-76 Goldsmiths' College, BA (Hons)  
 1976-79 Royal Academy Schools  
 1985 *Whitechapel Open*, Whitechapel Art Gallery, London  
 Galleries d'Art, Plouguerneau, France  
 1986 Danielle Harrison Gallery, London  
 1987 *Hunting Group Art Prizes*, Mall Galleries, London

**Kathleen Mullaniff** (b. 1957)

- 1987 Two person show, Castlefield Gallery, Manchester  
*Summer Show*, Christopher Hull Gallery, London  
 1988 *The Drawing Show*, Thumb Gallery, London  
 1989 *Summer Show*, Thumb Gallery, London  
 Sandra Higgins Fine Art, London  
*Images of Paradise*, Harewood House, Yorkshire

**Nigel O'Neill** (b. 1957)

- 1975-78 Stourbridge College of Art, BA (Hons)  
 1982-84 Goldsmiths' College, MA  
 1986 Visiting Artist, Fort Point Arts Community, Boston funded by the Massachusetts Council on the Arts and Humanities  
 1988 Commission for Coca Cola/Schweppes

**Vincenza Orofino** (b. 1955)

- St. Martin's School of Art  
 1979 Drawing in Whitechapel  
 1983 Exhibited in Rome  
 1984 *One Hundred Artists Show*  
 1987 Open studio, Chisenhale Studios

**Stuart Reid** (b. 1950)

- 1973 Group show, Institute of Contemporary Arts, London  
 1981 Group show, Ikon Gallery, Birmingham  
 1985 *Whitechapel Open*, Whitechapel Art Gallery, London  
 1986 Group show, The Crypt Gallery, London

Edward Chell (Chisenhale Studios), 'Self-Portrait 1', mixed media on paper, 115 x 152cm



- 1988 Solo show, Vortex Gallery, London  
 1988 Group show, Artworks Space, London

#### Hilary Rosen

- 1984 *Women's Images - Pandora's Box*  
 1985-86 *Tolly Cobbold Eastern Arts, The Fitzwilliam Museum, Cambridge and tour*  
 1986/88 *Whitechapel Open, Whitechapel Art Gallery, London*  
 1987 Solo show, Galerie Rose, Hamburg  
 1988 *Exhibition of Nudes, Galerie Rose, Hamburg*

#### Jo Stockham (b. 1961)

- 1980-83 Falmouth School of Art, BA (Hons)  
 1985-86 Chelsea School of Art, MA  
 1986 *New Faces at the Warwick, Warwick Arts Trust, London*  
 1987/88/89 *Whitechapel Open, Whitechapel Gallery, London*  
 1988 *Fragments of False Houses, Pomeroy Purdy Gallery, London*  
 1989 *3D '89, Watermans Art Centre/ Small Mansion Arts Centre, London*

#### Madeleine Strindberg

- 1982-85 Royal College of Art, MA  
 1984 *New Contemporaries, Institute of Contemporary Arts, London*  
 1986 Art Place Trust, Chisenhale Works, London  
 1987 Two person show, Warwick Arts Trust, London  
 1987-89 Associate lecturer at Brighton Polytechnic  
 1988-89 Artist in Residence, National Gallery, London

#### Richard Swift (b. 1958)

- 1976-80 University of Reading, BA (Hons)  
 1982 *Four Painters, Waterloo Gallery, London*  
 1985-86 *Tolly Cobbold Eastern Arts, The Fitzwilliam Museum, Cambridge and tour*  
 1987 *Two Painters, The Showroom, London*  
 1988 *The Invisible Man, Goldsmiths' College Gallery, London*  
 1989 *Woodlands Group Show, Woodlands Gallery, London*

#### Amikam Toren (b. 1945)

Exhibitions include solo shows at Anthony Reynolds Gallery, London and Victoria Miro Gallery, London

## Deborah House (SPACE)

Retreat Place, London E9  
 Telephone: 01-986 2646  
 29 September-1 October/Friday 12-6pm,  
 Saturday 12-9pm, Sunday 12-6pm

#### Felicity Allen (b. 1952)

- 1973-77 Exeter University, BA (Hons)  
 1982-84 Slade School of Art  
 1984-85 *Cafe Royal* installation, Institute of Contemporary Arts, London  
 1986 *The Naked City: Durham Effigy, Air Gallery, London*  
 1989 *A Spiritual Dimension, Peterborough Museum*  
 Solo show, Mario Flecha Gallery, London

#### Andy Cole (b. 1960)

- 1982-84 Slade School of Fine Art  
 1984 Boise award and scholarship  
*Pick of the Graduates, Christie's Inaugural Show, London*  
 1985 Group show, Universiade, Kobe, Japan  
 1987 *Quadroons Wraith: Vanitas Series, Sherkat Gallery, New York*  
 1988 Solo show, Bloomsbury Theatre Gallery, London

#### Annie Johns (b. 1945)

- 1983-88 St. Martin's School of Art, BA (Hons)  
 1986 Placement at Claremont Primary School, Nottingham  
 1987 Installation, Cahill and Grebler Gallery, London  
 1988 Installation, Watermans Arts Centre, London  
*Fragments of False Houses, Pomeroy Purdy Gallery, London*

#### Jo Madden

Corcoran School of Art, Washington  
 Included in group shows in California, New York and Washington

#### Jenny Polak (b. 1957)

- 1977-80 Cambridge University, BA (Hons)  
 1985-88 St. Martin's School of Art, BA (Hons)  
 1986 *London Institute Photography Show, Mall Galleries, London*  
 1987 *Constitutional Journeys, Cahill and Grebler Gallery, London*

- The Animal Show, The Young Unknowns Gallery, London*  
 1989 *Critics Space 5, Air Gallery, London*

#### James Rosenthal (b. 1956)

- 1978 Rhode Island School of Design  
 1983 Syracuse University  
 1984 *The Armed Show, Interim Art, London*  
 1986 SoHo Centre for the Visual Arts, New York  
 1988 Chisenhale Gallery, London  
*Playing for Real, Southampton City Art Gallery and tour*

#### Christopher Stevens (b. 1956)

- 1974-78 University of Reading  
 1984 Calouste Gulbenkian Foundation Artist as Printmaker award  
 1984-85 Artist in Residence, Birmingham International Airport  
 1989 Solo show, Sue Williams Gallery, London  
 Solo show, Black Bull Gallery, London  
*Fußball in der Kunst, Pfalzgalerie Kaiserlautern, West Germany*

#### Michael Williams (b. 1963)

- 1982-85 Wolverhampton Polytechnic & Ecole des Beaux Arts, Angers, France  
 1985 BA (Hons) Fine Art  
 Presently SPACE Studios Manager, London  
 My paintings are about power and the way people use it  
 Other exhibitors include Simon Betts, Clair Joy, Caroline Russell, Rebecca Scott and Jessica Shamash

*Eilis O'Connell (Delfina Studios), 'Orixa', painted and polished steel and canvas, 138 x 68 x 206cm*





# Delfina Studios

Unit H, Maryland Works,  
22 Grove Crescent Road, London E15  
Telephone: 01-519 8841  
18-22 October/12-7pm



Justin Jones (Delfina Studios), 'Barracoon for the Drowned', oil on canvas, 193 x 144cm

## Alexander Guy (b. 1962)

- 1980-84 Dundee College of Art
- 1985 Elizabeth Greenshields Foundation Award
- 1985-87 Royal College of Art
- 1986 Solo show, The Seagate Gallery, Dundee
- 1987 Solo show, Aberdeen Artspace
- 1989 Solo show, The Paton Gallery, London

## David Hugo (b. 1958)

- 1978-88 Sculptor in Residence, University of Warwick
- 1983 *A Frozen Moment*, Print Gallery, Royal College of Art, London
- 1984 Commission for Edward Cullinan Architects, Nationwide Conference Centre
- 1985 Solo show, Lanchester Gallery, Coventry
- 1987 *Between Scylla and Charybdis*, Mead Gallery, Warwickshire
- 1988 *Inaugural Exhibition*, Delfina Studios, London

## Justin Jones (b. 1961)

- 1980-81 Bournville School of Art
- 1981-84 Leeds Polytechnic
- 1986-87 St. Martin's School of Art
- 1987 Elizabeth Greenshields Foundation Award
- 1988 Academy of Fine Art, Warsaw, Poland
- 1989 Merz Contemporary Art, London

## Sally Moore (b. 1962)

- 1981-84 Ruskin School of Drawing
- 1986-87 City of Birmingham Polytechnic, MA
- 1988 Solo show, The Bridge Gallery, Polytechnic of Wales
- Royal Overseas League Exhibition* (Lucy Morrison Memorial prizewinner)

- 1989 *Inner Language*, Ikon Gallery, Birmingham and tour
- Christie's New Contemporaries*, Royal College of Art, London

## Eilis O'Connell (b. 1953)

- 1974-75 Massachusetts College of Art, Boston
- 1975-77 Crawford School of Art, Cork
- 1982 Group show, Paris Biennale
- 1984 *ROSC: Quadrennial International Exhibition*, Dublin
- 1986 *Steel Quarry*, Douglas Hyde Gallery, Dublin
- 1989 *Studio Artists: P.S.1*, Institute of Contemporary Art, New York

## Lucy Ross (b. 1961)

- 1982-85 Wimbledon School of Art, BA (Hons)
- 1986-88 Royal College of Art, MA
- 1989 Solo show, 369 Gallery, Edinburgh
- Group show, Chicago International Art Exposition
- Two person show, Berkeley Square Gallery, London
- Two person show, Terrain Gallery, San Francisco

## Jian Jun Xi (b. 1962)

- 1987 *Ink and Watercolour on Paper*, China National Gallery of Art
- 1988 Snug Harbour Cultural Museum, Staten Island
- Contemporary Chinese Works*, Ohio and tour
- Contemporary Chinese Painting*, Royal Festival Hall, London
- 1989 Group show, Nielson Gallery, Boston
- Solo show, October Gallery, London

# Leyton Artists Group (ACME)

Colville Road, Fillebrooke Road, Grove Green Road, London E11  
Telephone: 01-539 1889/237 5716/521 8423  
29 September-1 October/12-7pm

## Catherine Baker (b. 1959)

- 1979-82 Kingston Polytechnic, BA (Hons)
- 1983 *Whitechapel Open*, Whitechapel Art Gallery, London
- 1987 *Pictures from Wapping*, Tom Allen Centre, London
- The Moving City*, The 39 Steps, London
- 1987-88 *The South Bank Picture Show*, Royal Festival Hall, London
- 1988 Group show, The Challoner Club, London

## Julia Barton (b. 1959)

- 1986 *British Women Artists*, Battersea Arts Centre, London
- 1987 *Spain 1936 & on ...* touring exhibition
- 1987-89 Worker at the Women Artists Slide Library
- 1988 *The Demonstration*, Transport House, London for TGWU
- Residency, Sir George Monoux Secondary School, London
- 1988-89 Community Artist including Wandsworth Arts Sculpture Project

## Christine Chittock (b. 1952)

- 1975-78 North East London Polytechnic, Diploma in Fine Art
- 1984-85 Art skills sessions in Suffolk
- 1987-89 Visiting artist in Suffolk schools
- 1988 *Sixth Annual Artists in Essex*
- Art Activities Organiser, Sebert Road After School Club, London
- 1989 *Seventh Annual Artists in Essex*

## Jane Embleton (b. 1964)

- 1983-86 St. Martin's School of Art, BA (Hons)
- 1987 Creative therapy sessions, Castledean Special School, Brighton
- Environmental gardening project, Queens School Further Education Group
- 1988 Design for *Miss Donningthorpe's Maggot*, Almeida Theatre, London
- 1989 *A Room of One's Own*, William Morris Gallery, London

**Jennifer Hawkes**

- 1977-81 Newcastle-upon-Tyne University, BA (Hons)  
 1982-84 University of Reading, MA  
 1984-85 Sculpture Fellow, GlosCAT, Cheltenham  
 1989 Sculpture residency, William Morris Gallery, London  
 Co-ordinator of borough-funded community arts workshops  
 Wandsworth Arts community arts project for Balham

**Valerie Large**

- 1974 *Young London Sculptors* travelling exhibition  
 1978 *Paperworks*, Studio 7, Barbican Arts Group, London  
 1982 Usher Gallery, Lincoln  
 Aspex Gallery, Portsmouth  
 1984 Szombathely Museum, Hungary  
 1989 *New Fibre Art* postal exhibition

**Gavin Maughling** (b. 1960)

- 1979-82 Ruskin School of Drawing, BA (Hons)  
 1984 *Bluecoat Invitational*, Bluecoat Gallery, Liverpool  
*A View from my Window*, Angela Flowers Gallery, London  
 1986 Solo show, Carlile Gallery, London  
 1988 Group show, Angela Flowers Gallery, London  
 1990 Solo show, Burgh House Gallery, London

**Steve Rushton** (b. 1959)

- 1979-82 Kingston Polytechnic, BA (Hons)  
 1985 *Whitechapel Open*, Whitechapel Art Gallery, London  
 1986-87 *The Miners*, The Young Unknowns Gallery, London  
 1987-89 *The South Bank Picture Show*, Royal Festival Hall, London  
 1988 *The Outlook*, Oval House Arts Centre, London  
 1989 *Britain in the Eighties*, Janus Avivson Gallery, London

**William Stok** (b. 1946)

- University of Architecture and Academy of Sculpture, Rome  
 1972-73 St. Martin's School of Art, Advanced Sculpture  
 1984 Solo show, Arnolfini, Bristol  
 Solo show, Françoise Lambert, Milan  
 1987 Solo show, Albert Baronian, Knokke  
 1988 Solo show, Apollodoro, Rome

**Caroline Wadley** (b. 1963)

- 1981-85 St. Martin's School of Art, BA (Hons)  
 1987 *Dragon Dancers* with mentally-handicapped teenagers, Leyton Carnival  
 Pantomime with and for mentally-handicapped children  
 1988 Set up Abacus to do community and commercial projects  
 Co-ordinated workshops for International Women's Week  
 Workshops at Haywards Playground culminating in carnival parade

# Martello Street (SPACE)

10 Martello Street, London E8  
 Telephone: 01-254 9414  
 16-17 September

**Kimberley Bennett** (b. 1954)

- 1975-77 St. Martin's School of Art, BA (Hons)  
 1987 *The South Bank Picture Show*, Royal Festival Hall, London  
 1988 *Three Cities*, London and tour  
 Foundry Group Show  
*Sun Totem*, Clissold Park, London  
 Chartist Sculpture for Newport

**Peter Lloyd Bennett** (b. 1950)

- 1968-70 Plymouth College of Art  
 1970-73 Camberwell School of Art and Crafts  
 1985 Solo show, New Gallery, London  
 1986 Solo show, University College, London  
 1988 Solo show, Barbican Artworks Space, London  
 1989 Group show, Air Gallery, London

**Hervé Constant** (b. 1951)

- 1971-73 Ecole Nationale Supérieure des Arts et Techniques du Théâtre, Paris  
 1980-83 Beaux Arts de Toulon  
 1989 Solo show, Endell Street Gallery, London  
 Solo show, Galerie la Tête d'Obsidienne, France

- 1990 Solo show, Knapp Gallery, London  
 Solo show, Bercovy Fugier, Paris

**James Faure Walker** (b. 1948)

- 1966-70 St. Martin's School of Art  
 1970-72 Royal College of Art  
 1985 Solo show, Whitworth Art Gallery, Manchester  
 1987 Solo show, Vortex Gallery, London  
 1989 Group show, Gallery North  
 Group show, Air Gallery, London

**Maggie Jamieson** (b. 1956)

- 1976-79 University of Wales, BA (Hons)  
 1978 Oriel Gallery, Aberystwyth  
 1980/82 Open studio, Metropolitan Wharf  
 1983 Cherry Orchard Restaurant, London  
 1984 *Whitechapel Open*, Whitechapel Art Gallery, London  
*British Designers Exhibition*, Harrods, London

**Alison Jones** (b. 1962)

- 1981-82 Goldsmiths' College  
 1982-86 Slade School of Art  
 1985 *Whitworth Young Contemporaries*, Whitworth Art Gallery, Manchester (prizewinner)  
 1987 Artist in Residence, Yorkshire Art Circus, Sheffield  
 1989 *Critics Space 5*, Air Gallery, London  
*Idylls in '89*, Todd Gallery

**Coffin Price**

- Winchester School of Art  
 Chelsea School of Art  
 City & Guilds of London Art School  
 1988 *Gathering Rites*, The Pitt Rivers Museum, Oxford  
 1989 *Critics Choice 5*, Air Gallery, London  
 1990 *Gathering Rites*, Natural History Museum, London

**Mark Rushton** (b. 1942)

- Manchester College of Art and Design  
 Royal College of Art  
 1989 *Critics Choice 5*, Air Gallery, London

Other exhibitors include Roger Bates, Jane Boyd, Chris Christophorou, Martin Crawley, John Fassolas, Pete Johnson, Dennis Jones, Halbo Kool, Mandy McCartin, Jim Morrison, Robert Read, Shirley Read, Robert Russell, John Swarbrick, Christine Watson and Carl von Weiler

# Metropolitan Wharf

Wapping Wall, London E1  
Telephone: 01-481 3994  
22-26 September/2-9pm

## Christopher Banahan (b. 1958)

- 1978-79 Liverpool Polytechnic
- 1979 *Themism*, Centre Gallery, Liverpool
- Nottingham Castle Local Artists Exhibition
- 1979-81 Trent Polytechnic, BA (Hons)
- 1982-84 Goldsmiths' College, MA
- 1983 *Camden Annual*, Camden Arts Centre, London

## Mark Foulds (b. 1963)

- 1982-83 Maidstone College of Art, BA
- 1983-85 Trent Polytechnic, Nottingham, BA (Hons)
- 1987-88 Solo show, Dean Clough Contemporary Art Gallery, Halifax
- Chelsea School of Art, MA
- 1988 Barclays Young Painter of the Year

## Nigel Freake (b. 1959)

- 1978-81 Exeter University, BA (Hons)
- 1982 Solo show, Exeter University Library
- 1983 Solo show, Exe Gallery, Exeter
- Games*, Spacex Gallery, Exeter
- 1987 *CAF Group Exhibition*, Lion Yard Library, Cambridge
- 1988 Group show, Bezzaliel Gallery, London

## Bernadette Kerr (b. 1958)

- 1978-81 Trent Polytechnic, BA (Hons)
- 1981 *New Contemporaries*, Institute of Contemporary Arts, London
- 1982-84 Slade School of Fine Art, Higher Diploma
- 1984 Boise travelling scholarship to Italy
- 1988 *Domus Aurea*, The Winchester Gallery
- 1989-90 Rome Award

## Tina McCallan

- 1985 *Actually Physically Touching Me*, Mountbatton Gallery, Portsmouth
- 1986 *Women's Work*, Mountbatton Gallery, Portsmouth
- 1987 Group show, Mountbatton Gallery

- 1988 Solo show, Wapping Deli Cafe, London
- Open Submission*, Cafe Gallery, London
- 1989 Group show, The Dance Attic, London

## Simon Purins (b. 1964)

- 1984-87 Gloucestershire College of Arts & Technology, BA (Hons)
- 1987 Group show, Axiom Centre, Cheltenham
- Art for Ethiopia*, Cheltenham Town Hall
- 1988 Group show, Stroud Subscription Rooms
- 1989 One week residency, Gloucestershire College of Arts & Technology
- Group show, Gloucestershire College of Arts & Technology

## Rachael Reeves (b. 1960)

- 1981-85 Coventry Polytechnic, BA (Hons)
- 1985 Herbert Art Gallery, Coventry
- 1986 *Expo '86*, Stoke-on-Trent Festival
- 1987 *Art at the Canal, Work in Progress*, Coventry Canal Basin
- 1987-88 Chelsea School of Art, MA
- 1989 *Leicestershire Exhibition for Schools and Colleges*

## Ivan Riches (b. 1959)

- 1984-87 Gloucestershire College of Arts & Technology, BA (Hons)
- 1986 *New Contemporaries*, Institute of Contemporary Arts, London
- GlosCAT travel bursary
- 1987 *Prints & Drawings*, Axiom, Cheltenham
- 1987-88 Birmingham Polytechnic, MA
- 1989 *The Leicestershire Exhibition*, Beaumanor Hall, Loughborough

## Lesley Smailes (b. 1965)

- 1985 Group show, Rhumarallas Gallery, Melbourne
- 1986 Group show, Melbourne Fringe Festival
- 1986-87 *Battery Hens*, Melbourne and Adelaide Arts Festivals
- 1987 Group show, Bad Gallery, Melbourne
- Costume and Mask Display, Seaman's Mission, Melbourne
- 1988 *Tunnel of International Art*, Wuppertal, West Germany and tour

## Andy Stewart (b. 1963)

- 1981-82 Barnfield College, Luton
- 1982-85 Gloucestershire College of Arts & Technology, BA (Hons)
- 1986 Mural commission CEGB, Oldbury-on-Severn
- 1987 Group show, Park Gallery, Cheltenham



Metropolitan Wharf Studios

## Michael Stubbs (b. 1961)

- 1984-87 Bath Academy of Art, BA (Hons)
- 1986 Group show, Corsham Court, Wiltshire
- 1987 *Art Matters*, Bath Reference Library
- Docklands Art*, Metropolitan Wharf, London
- Group show, Solihull Library, Birmingham
- 1988-90 Goldsmiths' College, MA

## Adrian Taylor (b. 1959)

- 1979-83 Bath Academy of Art, BA (Hons)
- 1986-88 Royal College of Art
- 1985 Solo show, South Square Gallery, Bradford
- 1989 Bath Art Fair (Creasers Gallery)
- Group show, Viridian Gallery, New York
- 1989-90 *Touvert*, Paddington Print touring exhibition

## Barbara Tyrrell (b. 1956)

- 1978-79 Dress designer and illustrator to Zandra Rhodes
- 1979-84 Part-time lecturer, Chelsea School of Art
- 1983 *Riverside*, BBC1 (short film)
- 1987 *Dockland Art*, Metropolitan Wharf, London
- Riverside Open*, Riverside Studios, London
- 1988 Oppenheim John Downes Award

## Paul Walker (b. 1960)

- 1984-87 Birmingham Polytechnic, BA (Hons)
- 1986 Group show, Royal Birmingham Society of Artists
- 1987 Solo show, Solihull Library Gallery
- The Young Unknowns Gallery, London
- 1987-88 Chelsea School of Art, MA
- 1988 *Floor to Ceiling*, Pomeroy Purdy Gallery, London

Other exhibitors include Rebecca Crow, Ashley Davis, Colin Naylor, Lance Smith and Vitamin B12.

## Milborne Street (SPACE)

15 Milborne Street, London E9  
Telephone: 01-985 3990  
30 September-1 October/1-7pm

### Lesley Barnes (b. 1951)

I paint because I have to. I paint symbols of people, emotions and feelings... Each painting is a combined struggle of working through feelings and the difficulties and joys of painting

### Krystyna Dzieszko

- 1967-70 Manchester School of Art
- 1970-71 Manchester Polytechnic
- 1983 *Synthesis*, Camden Arts Centre, London
- 1986 *Hampstead Artists (1946-86)*, Camden Arts Centre, London
- 1989 *Critics Space 5*, Air Gallery, London  
*Artists of Polish Origin*, Warsaw and tour

### Priscilla Golush

Abstract and figurative work relating to the female body plan. Sculpture, reliefs and drawings in a variety of materials

### Guy Hetherington (b. 1948)

- 1968-72 Kingston College of Art
- 1980 Solo show, House Gallery, London
- 1982 *Contemporary Choice*, Serpentine Gallery, London
- 1986 Group show, Contemporary Art Society Market
- 1988 *Whitechapel Open*, Whitechapel Art Gallery, London
- 1989 *Critics Space 5*, Air Gallery, London

### Diana Sellers

A shape, longer vertically than diametrically, allows in length a *duplication* over and over, again and again, and the other way, *uninterrupted continuing succession*. These *patterns* are *imitations* and copies and this repetition of an action is one guess at finding an answer

Other exhibitors include Jane Gifford, Patrick Lasalle, Susan Moodie, Kitty Reford, Graham Revell and John Shennan

## New Hoxton Workshops

27-29 New North Road, London N1  
Telephone: 01-251 2791  
13-15 October/Friday 12-6pm, Saturday  
11am-6pm, Sunday 11am-5pm (preview  
13 October 6-9pm)

### Mandy Bonnell (b. 1957)

- 1976-79 Gloucestershire College of Arts & Technology, BA (Hons)
- 1980-83 Royal College of Art, MA
- 1985 Chicago Art Fair
- 1987 *150 Years of Printmaking at the Royal College of Art*, Barbican Centre, London
- 1988 Solo show, Anderson O'Day Gallery, London  
*'Into the Further Horizon' - The British Artist as Traveller*, Brighton

### Nicola Tassie (b. 1960)

- 1979-83 Central School of Art, BA (Hons)
- 1983 *Pick of the Graduates*, Christie's, London
- 1987 Group show, Cottage Place Gallery, London
- 1988 *Art for Youth*, Mall Galleries, London
- 1988-89 Founded New Hoxton Ceramics
- 1989 *Whitechapel Open*, Whitechapel Art Gallery, London

### Michael Taylor (b. 1958)

- 1978-81 Newport School of Art, BA (Hons)
- 1981-82 Central School of Art
- 1982-86 Studio assistant to Anthony Benjamin
- 1986 Founded Paupers Press
- 1988 Co-founder Tricorne Publications
- 1986-89 Part-time tutor, Central School of Art

Other exhibitors include New Hoxton Ceramics, New North Press, Paupers Press and Tricorne Publications

## Norfolk House Studios (SPACE)

Norfolk House, Brookmill Road, London SE8  
Telephone: Block A: 01-692 4947/  
Block B: 01-692 3597/Block C: 01-692 4170  
14-15 October/1-6pm (preview 13 October  
7.30-9pm)

### Block 'A'

#### Aurora Bengoechea (b. 1948)

- 1981-85 Chelsea School of Art, BA (Hons)
- 1986 *Camden Annual*, Camden Arts Centre, London
- 1986-88 Royal College of Art, MA
- 1987 Solo show, Flaxman Gallery, London
- 1988 Solo show, G. Comte Gallery, Valencia
- 1989 Two person show, Cadogan Contemporary Gallery, London

#### Sophie Horton

- 1982/88 *Whitechapel Open*, Whitechapel Art Gallery, London
- 1983/87  
/89 *Leicestershire Exhibition for Schools and Colleges*
- 1985 *Tolly Cobbold Eastern Arts*, The Fitzwilliam Museum, Cambridge and tour
- 1986 *Hats Off Exhibition*, Loseby Gallery, Leicester and tour
- 1989 *Critics Space 5*, Air Gallery, London  
Group show, Goldsmiths' Gallery, London

#### A. J. Rylands

- 1981-85 The City & Guilds of London Art School
- 1984 City & Guilds Sketch Book Prize  
Philip Conrad Travelling Award
- 1988 *Art in Business*, Cambridge, for Arthur Young  
Two woman show, Moreton Hall School, Shropshire  
IAC Certificate of Excellence,  
International Art Competition, New York

### Block 'B'

#### Erminio Schieppati (b. 1944)

- 1982 *Essex Festival of Contemporary Art*
- 1985 Brixton Art Gallery, London
- 1987 Group show, Tricycle Theatre

- 1988 *The London Group 75 Anniversary Show*  
*Homage to the Square*, Flaxman Gallery, London
- 1989 *Critics Choice 5*, Air Gallery, London

**Michael Shaw** (b. 1959)

- 1981-84 Slade School of Fine Art
- 1982 *Medical Aid for Vietnam*, Roundhouse, London
- Artists in Middlesborough*, Washington and tour
- 1988 *Whitechapel Open*, Whitechapel Art Gallery, London
- 1989 *Summer Exhibition*, Royal Academy of Arts, London

*Block 'C'*

**Matthew Carey**

- 1985-86 Northern Arts Artist in Residence, Durham Cathedral
- 1986 DLI Museum & Art Centre, Durham
- 1987 York City Art Gallery, York
- Group show, Camden Arts Centre, London
- 1989 *Art Fair*, Air Gallery, London
- Critics Space 5*, Air Gallery, London

**Michael Greene** (b. 1949)

- 1966-68 Sutton School of Art
- 1968-72 Epsom School of Art
- Exhibited at the Royal Academy of Arts and New English Art Club

**Gerda Rubinstein**

- 1948 Wessel Couzyn's studio, Amsterdam
- 1949-53 Rijksakademie, Amsterdam and Grande Chaumière, Paris
- 1964 Solo show, Holland Park Gallery, London
- 1978/88 Group show, Hannah Peshar Gallery, Surrey
- 1983 Solo show, South London Art Gallery
- 1986 Solo show, Galerie Petit, Amsterdam
- NMB Bank, Amsterdam

**Lou Smith** (b. 1955)

- 1978-81 Ravensbourne College of Art and Design, BA (Hons)
- 1982 *John Moores Liverpool Exhibition*, Walker Art Gallery
- 1984 Solo show, Centre 181, London
- 1989 *Critics Space 5*, Air Gallery, London
- Two person show, Greenwich Theatre Gallery, London
- Two person show, 369 Gallery, Edinburgh

Other exhibitors include

- Block 'A'*  
Suzie Bazaks, Victoria Threadfell and Pippa Tuck
- Block 'B'*  
Phil Baird, Aurora Bengoechea, Philip Hodgetts, Robert Koenig and Austen Pinkerton
- Block 'C'*  
Paul Donnelly

# Pixley Street Studios

14 Pixley Street, London E14  
Telephone: 01-555 1672  
22-24 September/12-6pm  
(preview 21 September 6-9pm)

**Liz Ellis** (b. 1960)

- 1983-88 St Martin's School of Art, BA (Hons)
- 1983- Visual arts workshop leader with SHAPE
- 1986- ILEA Adult Education Arts Tutor, East London Day Centre
- 1988 Member of Editorial Collective of Feminist Art News
- Workshops on Demand* (funded by GLA), Whitechapel Art Gallery, London
- 1989 Group show, Tom Allen Centre, London

**Jonathan Hatt** (b. 1961)

- 1981-85 Camberwell School of Art and Crafts
- 1985-86 New Mexico State University
- 1987 *Closed Circuits*, Old Knowes Gallery, Nottingham
- 1988 *Showhome*, Abbey Park Show, Leicester
- Locomotion*, Milton Keynes Exhibition Gallery

**Vanessa Johnson** (b. 1963)

- 1982-85 Lanchester Polytechnic
- 1986 Solo show, Fiction Gallery, Southampton
- The South Bank Picture Show*, Royal Festival Hall, London
- 1987 Solo show, The Gantry, Southampton
- 1988 Solo show, Freuds, London
- Solo show, The 39 Steps Gallery, London

**D.H. Lockett** (b. 1958)

- 1976-77 Bath Academy of Art
- 1979-82 Westhill Teacher Training College
- Taught at various secondary schools in England
- 1987-88 Teaching in Mozambique

**Duncan MacArthur**

- 1983 *New Contemporaries*, Institute of Contemporary Arts, London
- 1984 *Today's Contemporaries are Tomorrow's Yesterdays*, AEG Bau, Berlin
- 1985 *Waterfall* installation, Formine, Lago Maggiore, Italy
- 1986 Courtyard installation, Galerie Waschsalon, Frankfurt, West Germany
- Ateliers*, Galerie Haus am Luetzowplatz, Berlin
- 1988 *Inside America from the outside — where have all the heroes gone* San Pedro Studios, Los Angeles

**Beth Mitchell** (b. 1963)

- 1983-86 Goldsmiths' College, BA (Hons)
- 1987 Group show, The Crypt, St. George's Church, London
- South London Open*, South London Art Gallery
- 1988 Bronze commission from British Telecom for Stablehand of the Year
- Bursary from Joseph Mendelson Trust
- 1989 *3D'89*, Watermans Arts Centre, London

**Tessa Rawcliffe**

- 1973-74 St. Albans College of Art
- 1974-77 Liverpool College of Art, BA (Hons)
- 1984-85 St. Albans Post-Graduate Diploma in Art Therapy
- 1986-87 *Realizing Power*, Women's Work Artists Collective Group exhibition
- 1987- *Bloomin' Wimin!*, Women's Eye Artists Co-operative Group exhibition
- 1988- Open studio, Pixley Street Studios

**Kevin Rowe** (b. 1952)

- 1982-84 Middlesex Polytechnic, Dip.Ed.
- 1984 Solo show, The Mansion, Trent Park
- 1984-86 Middlesex Polytechnic, BA (Hons)
- 1986 Rank Xerox touring exhibition
- 1988 Rank Xerox touring exhibition

**Harald Smykla** (b. 1961)

- 1981-86 Karlsruhe Academy of Fine Arts

**Robert Talbot** (b. 1956)

- 1976-79 Lanchester Polytechnic

- 1978 *Northern Young Contemporaries*, Whitworth Art Gallery, Manchester
- 1981 *Hampstead Artists' Group*, Camden Arts Centre, London
- 1982 Casa Colonoca Antonini, Perugia, Italy
- 1983 *Whitechapel Open*, Whitechapel Art Gallery, London
- 1987 *East End Street Scenes*, Homerton Hospital, London

**Lisa Wooding** (b. 1965)

- 1984 Cartrefle College
- 1984-87 Duncan of Jordanstone College of Art, BA (Hons)
- 1988 *London Festival Open Exhibition*, Alexandra Palace, London
- Newport International Eisteddfod, Wales
- 1989 *Animal Rights & Wrongs*, Community Copy Art Centre, London
- Scottish Contemporary Art Show*, Symondsburry Art Gallery, Dorset

**Elaine Yhip** (b. 1963)

- 1983-86 Central School of Art, BA (Hons)
- 1986 *Class of '86 London Institute Exhibition*, Royal Festival Hall, London
- Young Finalists' Exhibition*, Escape Gallery, London
- 1987 *Leicestershire Annual Collection*, Beaumanor Hall, Loughborough
- 1988 Artist in Residence, Beaumanor Hall, Loughborough
- Open studio, Limehouse, London

Other exhibitors include Sally Barker, Mark Darbyshire, Ashley Greaves, Ron Harris, Philip Howard, Sofia Kelly, Paul Noble, Ian Osborne and Chris Purnell

*Red Cow Studios*



# Red Cow Studios Cooperative

Larnaca Works, Grange Walk, London SE1  
 Telephone: 01-237 9360  
 13-15 October/ 12-6pm  
 (preview 13 October 12-8pm)

**Anna Best** (b. 1965)

- 1984-87 Coventry Polytechnic, BA (Hons)
- 1986 *Sculpture*, Whitefriars Gallery, Coventry
- 1987 Reflections of Technology award (1st prize)
- 1988 *Featured Artist*, The Young Unknowns Gallery, London
- Art Market '88*, Smiths Galleries, London
- 1989 *The Leicestershire Exhibition*, Beaumanor Hall, Loughborough

**Andrea Carr**

- 1981-84 Trent Polytechnic, BA (Hons)
- 1984-86 Slade School of Fine Art, MA
- 1988-89 *What is Seized* set design, Drill Hall, London
- Through a Glass Onion* set design, Duke of Cambridge, London
- Christie in Love* set design, Open Plan Theatre, London
- Set Designer, ALRA Drama College, London

**Amanda Duncan** (b. 1963)

- 1983-87 Ravensbourne College of Art & Design, BA (Hons)
- 1989 The Princes Youth Business Trust Award

Member of The Society of Designer Craftsmen, The London Potters Association and The Kent Potters Association

**Nick Gurney**

- 1984-85 Gwent College of Higher Education, BA (Hons)
- 1989 Theatre photography for *What is Seized*, Drill Hall, London; *Long Time Gone*, Lyric Studio, London; *Duchess of Malfi*, Duke of Cambridge, London;

*Karna, Child of Sun God*, Tara Arts Centre, London; and *Gladrag Dolls*, Edinburgh Festival

**Sara Jane Harper** (b. 1959)

- 1979-82 Coventry Polytechnic, BA (Hons)
- 1985-87 University of Reading, MFA
- 1982 Ikon Gallery, Birmingham and tour
- 1986 *Artist of the Day*, Angela Flowers Gallery, London
- 1987 *Four Women Show*, South Hill Park Arts Centre, Bracknell
- Whitworth Young Contemporaries*, Whitworth Art Gallery, Manchester

**Clifton Jones**

- University of Reading, BA (Hons)
- Slade School of Art
- My recent concerns are with developing surfaces and using these surfaces with imagery that reflects my personal and political place in this vast amoebic civilisation that has swallowed up so many other civilisations

**Jules Mylius** (b. 1963)

- 1981-83 Chelsea School of Art
- 1983-86 Loughborough College of Art and Design, BA (Hons)
- 1986-87 Manchester Polytechnic, MA
- 1987 *Architecture Association Exhibition*, Manchester
- Monolith, London
- 1988 Group show, Boundary Studios, London

**Clare Palmier**

- 1981-82 Wimbledon School of Art
- 1983-86 Goldsmiths' College, BA (Hons)
- 1984 *Life into Art*, Riverside Studios, London
- 1985 *Rooms to View*, Battersea
- 1986 *Underwater* installation, King George's Park, London
- 1988 *Watchers* performance, Derry City Centre

**Catherine Vass** (b. 1963)

- 1982-86 Slade School of Fine Art, BA (Hons)
- 1984-85 Hochschule der Kunst, Berlin
- 1984 *New Contemporaries*, Institute of Contemporary Arts, London
- 1986-87 Boise travelling scholarship
- 1988 *Pathway*, Rosary Cemetery, Norwich (commission)
- 1988-89 Goldsmiths' College, MA

# Richmond House Studios (SPACE)

199-205 Richmond Road, London E8  
Telephone: 01-985 4772  
16-18 September/Saturday 12-6pm,  
Sunday 12-6pm, Monday 2-6pm

## Amanda Benson (b. 1962)

- 1981-84 North East London Polytechnic, BA (Hons)
- 1985 Aspects Gallery, London
- 1986 *Camden Annual*, Camden Arts Centre, London
- 1988 *The Bastille Opens Its Doors To Europe*, Paris
- 1989 MM Arts, Skillions Business Centre, London  
Submarine Gallery, London

## Zbigniew Buday (b. 1944)

- 1963-65 Camberwell School of Art and Crafts
- 1965-68 Hornsey College of Art, BA (Hons)
- 1971 Solo show, Losin Winn Gallery, Austin, Texas
- 1972 *Contemporary Southwest Art*, Fort Worth Arts Center, Texas
- 1988 Solo show, Souyun Yi Gallery, New York
- 1989 Group show, Souyum Yi Gallery, New York

## Zoe Callaghan

- 1977 Solo show, Tower Theatre, London  
*Summer Exhibition*, Royal Academy of Arts, London
- 1981 Solo show, New Style Gallery, London
- 1983 Solo show, Cellar Gallery, London
- 1988 Group show, Richard De Marco Gallery, Edinburgh
- 1989 Group show, Air Gallery, London

## Steven Copus (b. 1956)

- 1980-83 Camberwell School of Art and Crafts, BA (Hons)
- 1983 *New Contemporaries*, Institute of Contemporary Arts, London  
*New Graduates*, Christie's Fine Art, London

- 1986 *South London Open*, South London Art Gallery  
*Drawing Open*, Cafe Gallery, London
- 1989 *Critics Space 5*, Air Gallery, London

## Richard Crawford (b. 1945)

- 1963-67 Hornsey College of Art
- 1979-80 Goldsmiths' College
- 1984 *Whitechapel Open*, Whitechapel Art Gallery, London
- 1987 *Art Now: Surreal Tendency*, Space Studios, London
- 1989 *Critics Space 5*, Air Gallery, London  
*Summer Exhibition*, Royal Academy of Arts, London

## James Dunkley (b. 1944)

- 1960-64 Birmingham College of Art
- 1987 *Athena Art Awards*, Barbican Centre, London  
*MM Arts Inaugural Exhibition*, Butler's Wharf, London
- 1988 *Heads & Figures*, Anderson O'Day Gallery, London
- 1989 Solo show, Albemarle Gallery, London  
*Critics Choice 5*, Air Gallery, London

## Jim Jack (b. 1955)

- 1975-78 North East London Polytechnic
- 1981-83 Working Mens College
- 1985/86 /87 Vortex Gallery, London
- 1988-89 *Art Fair*, Air Gallery, London
- 1989 *All at Sea* group show  
*Critics Choice 5*, Air Gallery, London

## Yumi Katayama (b. 1955)

- 1979-82 Goldsmiths' College, BA (Hons)
- 1983-84 Central School of Art
- 1984-86 Royal College of Art, MA
- 1987 Solo show, Creaser Gallery, London
- 1988 *One Hundred Years of the Royal College of Art*, Barbican Art Gallery, London
- 1989 *Acid Mix*, Heritage Centre, London

## Garth Lewis

- 1964-67 Hornsey College of Art
- 1967-69 University of New Mexico
- 1969-71 Queens College, City University, New York
- 1980 Solo show, Air Gallery, London
- 1988 *Whitechapel Open*, Whitechapel Art Gallery, London
- 1989 *Critics Choice 5*, Air Gallery, London

## Priscilla Manthey (b. 1944)

- 1980-84 Camberwell School of Art and Crafts, BA (Hons)
- 1984-86 Slade School of Fine Art
- 1984 Richard Ford Award for Painting in Spain
- 1986 *Open Drawing Exhibition*, South London Art Gallery  
*Contemporary Art Society Show*, Smiths Galleries, London
- 1989 Concourse Gallery, Sir John Cass School of Art, London

Other exhibitors include Roberta Kravitz, Brian Nicol and Richard Plank

# Robinson Road (ACME)

15 Robinson Road, London E2  
Telephone: 01-980 0189  
30 September-1 October/11am-6pm  
(preview 29 September 4-8pm)

## Gary Anderson (b. 1952)

- 1976-79 Manchester Polytechnic, BA (Hons)
- 1979-81 Slade School of Fine Art
- 1983 Solo show, Haworth Gallery, Lancashire
- 1984 Solo show, The New Gallery, London
- 1985 Solo show, Tom Allen Centre, London
- 1986 Solo show, Vortex Gallery, London

## Kerry Andrews (b. 1956)

- 1976-79 Ruskin School of Drawing
- 1981-83 Goldsmiths' College, MA
- 1984 *Islanders, A Picture Drama*, The Showroom, London
- 1986 *From the Field*, The Showroom, London
- 1987 *Installment, 5 British Installation Artists*, Plan K Gallery, Brussels
- 1988 *Untitled (Rather let it be named from the fish that swim in it)*, Unit 7 Gallery, London

## Paul Argent (b. 1959)

- 1978-81 Chelsea School of Art
- 1981-83 Slade School of Fine Art
- 1983 *15 British Contemporaries*, California
- 1985 Woodlands Gallery, London

- 1987 Solo show, London College of Furniture  
 1988 Open Studios Group Show, The Showroom, London

**Fiona Carson** (b. 1947)

- 1976-80 St. Martin's School of Art  
 1981-83 Goldsmiths' College, MA  
 1982 *The London Group*  
 1984 *New Contemporaries*, Institute of Contemporary Arts, London  
 1986 *Dialogues*, Art Research Group, Haworth Gallery, London  
 1989 *A Clue of Thread*, Dixon Gallery, London



*Ben Joiner (Robinson Road)*, installation at Woodlands Gallery, London

**James Cowan** (b. 1948)

- 1981 *The London Group*  
 1983 Peterborough City Art Gallery  
 1984 Aspex Gallery, Portsmouth  
 1985 Woodlands Art Gallery, London  
 1986 *Camden Annual*, Camden Arts Centre, London  
 1988 *The Warehouse Exhibition*

**Antonia Dewhurst** (b. 1953)

- 1975-78 West Surrey College of Art and Design  
 1985 Group show, The Showroom, London  
 1986 *Music Sketches*, Whitechapel Library, London

- 1987 *Colour, Rhythm and Sound*, Spitalfields Workspace, London

- 1989 Group show, Woodlands Gallery, London

Works in private collections in Germany, Great Britain, Holland and USA

**Richard Ducker** (b. 1959)

- 1977-82 University of Reading, BA (Hons)  
 1985 The Showroom, London  
 1986 Brixton Art Gallery, London  
 Coracle, London  
 1987 Short-listed for British Rail sculpture commission

**Debbie Duffin** (b. 1953)

- 1972-76 Lanchester Polytechnic, BA (Hons)  
 1987 Publication of *Organising Your Own Exhibition — A Guide for Artists*  
 1988 Solo show, Unit 7 Gallery, London  
 1989 3D'89, Watermans Arts Centre, London  
 Co-ordinator of *East End Open Studios*, Whitechapel Art Gallery, London

Work in private collections in Denmark, France, Germany, Great Britain and USA

**Jan Gage** (b. 1955)

- 1975-78 Cardiff College of Art, BA (Hons)  
 1978-79 Chelsea School of Art, MA  
 1979 *Uses of Drawing*, Whitechapel Art Gallery, London  
*Cleveland Drawing Biennale*  
 1980 *Heads and Tails*, Newcastle University Gallery  
 1986 Solo show, Howard Gardens Gallery, Cardiff

**Fiona Hamley**

- 1972-76 Central School of Art  
 1986 *PMC Birthday Exhibition*, Royal Festival Hall, London  
 Spitalfields Workspace, London  
 1987 *Rouge Press*, Curwen Gallery, London  
 1988 *Three Women Artists*, Ayling Porteous Gallery, Chester  
 1988 *Rouge Press*, Oriel Gallery, Clywd and tour

**Ben Joiner** (b. 1952)

- 1977-80 Chelsea School of Art, BA (Hons)  
 1980-81 Chelsea School of Art, MA  
 1986 *Camden Annual*, Camden Arts Centre, London  
 1988 Malcolm Puttick Commission  
 1989 Teaching, Harrow School of Art

Work in collections of Crafts Council, Arts Council of Great Britain and Contemporary Art Society

**Alex Julian** (b. 1962)

- 1985 Artshow, London  
 1986 *Contemporary Art Fair*, Olympia, London  
*South East London Open Exhibition*  
*Riverside Open*, Riverside Studios, London  
 1988 *Three Women Artists*, Islington Arts Factory, London  
 Solo show, The Groucho Club

**Dave King** (b. 1946)

- 1965-68 Leeds College of Art  
 1968-70 Slade School of Fine Art  
 1986 *Artsite — Sculpture in the City*, Bath  
 1988 *Sculptors Working*, London Island City, New York  
*Eight British Artists*, Gallery Sapet, Valance, France

**Hilary Kirby** (b. 1964)

- 1983-86 Chelsea School of Art, BA (Hons)  
 1985 *On Paper*, Battersea Arts Centre, London  
 1986 *London Institute Exhibition*, Royal Festival Hall, London  
 1986-87 Chelsea School of Art, MA  
 1987 Bird Street Gallery, London  
 1989 *Idea Books*, Milan, Italy

**Elaine Kowalsky** (b. 1948)

- 1973-74 Canada Council Arts Award  
 1987 Henry Moore Fellowship  
 1988 *Hearts and Vessels*, Leeds City Art Gallery  
 1989 Solo show, Redfern Gallery, London  
*Wood and Lino*, Anderson O'Day Gallery, London  
 1990 Group show, Oxford Gallery, Oxford

**Janet Ludlow** (b. 1950)

- 1984 *Summer Exhibition*, Royal Academy of Arts, London  
 1985 Group show, Galerie Breteau, Paris  
 Solo show, The Playhouse Gallery, Harlow  
 1986 *Harrowgate in Colour*, Royal Baths, Harrowgate  
 1987 *Leicestershire Schools Exhibition*  
 Solo show, Hardware Gallery, London



**Kay MacLaurin** (b. 1947)

- 1963-68 Sheffield College of Art  
1968-69 Chelsea School of Art  
1969-70 French Government Scholarship  
1970-73 Lived and worked in Tunisia  
1974-75 Fellowship, South Devon Technical College  
1983 *Summer Show*, Kruithuis, s'Hertogenbosch, Holland

**Stephen Naylor** (b. 1957)

- 1976-80 University of Reading  
1983 *4 Artists*, The Showroom, London  
Tower Hamlets Arts Committee Grant  
1987 *Greenwich Open Exhibition*, Woodlands Gallery, London  
1988 Whitechapel Library, London  
1989 One One Nine Gallery, London

**Keith Passingham** (b. 1957)

- 1976-79 Stourbridge College of Art, BA (Hons)  
1979-80 Chelsea School of Art, MA  
1987 Review, Barrie Cook, *Artscribe International*  
Exhibition Catalogue, *John Mitchell*, Ikon Gallery, Birmingham  
1988-89 Part-time lecturer, Wimbledon School of Art  
Visiting lecturer at Birmingham Polytechnic and Kingston Polytechnic

**Carol Robertson** (b. 1955)

- 1980-81 Chelsea School of Art, MA  
1981-82 Boise scholarship to Italy  
1982 *Three Artists*, New Art Centre, London  
1984 *Industrial Sponsors*, Warwick Arts Trust, London  
1985 Solo show, The Showroom, London  
1987 Solo show, London College of Furniture

**Kate Smith**

- 1980-83 Sunderland Polytechnic, BA (Hons)  
1984 *Ambient Azione Poetica*, Crema and Salerno, Italy  
1984-86 Goldsmiths' College, MA  
1987 Crypt of St. Georges Church, London  
*Smoke Trail/Smoke Screen*, Matt's Gallery, London  
1988 Joint curator of *The Invisible Man*, Goldsmiths' College Gallery, London

**Anthony Whishaw** (b. 1930)

- 1987-89 *Reflections after Las Meninas*, Royal Academy of Arts, London and tour

- 1988 *The Romantic Tradition in Contemporary British Painting*, Madrid and tour

**Sharon White** (b. 1948)

- 1966-69 Illinois Wesleyan University, BA (Hons)  
1984/86 /88 Open studio, Robinson Road  
Murals for Sultan of Brunei, George Walker Leisure, Colofax and Fowler

**Richard Wise**

- 1979-82 London College of Printing  
1982-84 Slade School of Fine Art  
1985 *Double Elephant Exhibition*, Barbican Centre, London  
*Camden Annual*, Camden Arts Centre, London  
1987 Solo show, Soho Poly Theatre Gallery, London  
1989 Solo show, Freuds, London

## Unit 7

1st Floor, 36-38 Peckham Road, London SE5  
Telephone: 01-703 6824  
20-22 October/12-8pm

**Mark Baxter** (b. 1958)

- 1977-80 North East London Polytechnic, BSc (Hons)  
1980-81 Sir John Cass' School of Art, London  
1988 Solo show, Sue Williams Gallery, London  
1989 Solo show, Vortex Gallery, London  
Also exhibited at Royal Academy of Arts, Mall Galleries and Camden Arts Centre

**Jon Bradley** (b. 1960)

- Reading University, BA (Hons)  
1987 Bedford Hill Gallery touring exhibition  
1988 *Meta Incognita*, Cafe Gallery, London  
*Cafe Gallery Open*, London  
*Print Exhibition*, Pomeroy Purdy Gallery, London  
1989 *What No Words Can Paint; Wonders of the World*, St. James Church, London

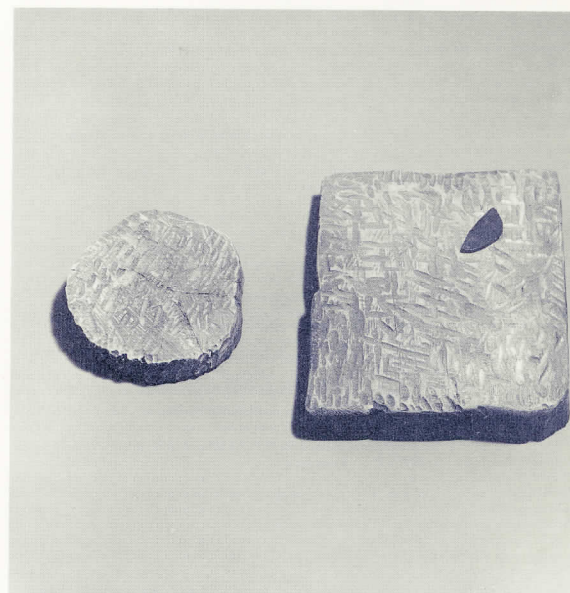
**David Foster** (b. 1961)

- 1981-84 Goldsmiths' College

- 1984 *Pick of the Graduates*, Christies, London  
1986 *New Contemporaries*, Institute of Contemporary Arts, London  
1987 Camden Arts Centre, London  
1989 *Six British Artists, Selected Work*, Rijksakademie Gallery, Amsterdam  
*MA Degree Show*, Goldsmiths' College

**Elli Lestas** (b. 1959)

- 1979-80 Medway College of Design  
1980-84 Camberwell School of Art and Crafts, BA (Hons)  
1986 *London Fashion Centre Exhibition*



*Kay MacLaurin (Robinson Road), 'Nanzenji Stones', wood, 53 x 31 x 7cm*

*London Pride*, Lamont Gallery, London

*Body Adornment Show*, Adam Gallery, London

Published work in AOI Magazine

**Anne Michie** (b. 1959)

- 1980-83 Kingston Polytechnic, BA (Hons)  
1985-87 Goldsmiths' College, MA  
1988 *Subversive Stitch*, Cornerhouse Gallery, Manchester  
*Baggage* (short film by Peter Carlton)  
*Fragments of False Houses*, Pomeroy Purdy Gallery, London  
*Homage to the Square*, Flaxman Gallery, London

**Cathy de Monchaux** (b. 1960)

- 1980-83 Camberwell School of Art, BA (Hons)  
1985-87 Goldsmiths' College, MA  
1988 *Riverside Open*, Riverside Studios, London  
Solo show, Mario Flecha Gallery, London  
1989 *It's a Still Life*, Arts Council of Great Britain touring exhibition  
*Promises Promises*, Serpentine Gallery, London and tour

**Anna Mossman**

- 1981-85 Camberwell School of Art and Crafts, BA (Hons)  
1986 Solo show, Salisbury Art Centre  
1986-88 Goldsmiths' College, MA  
1988 Rome Award in Sculpture, The British School in Rome  
1989 *Mostra*, The British School in Rome  
*Copyart*, ART/London 89, Olympia, London

**John Plowman** (b. 1953)

- 1977-80 Leicester Polytechnic  
1986 *New British Sculpture*, Air Gallery, London  
1986-87 Goldsmiths' College  
1987 *Whitechapel Open*, Whitechapel Art Gallery, London  
1987/88 Solo shows, Mario Flecha Gallery, London  
1988 *Second Wave*, Bluecoat Gallery, Liverpool

**Claire Scanlon** (b. 1962)

- 1981-84 Brighton Polytechnic, BA (Hons)  
1987-89 Goldsmiths' College, MA  
1988-89 *Interim Show*, Goldsmiths' College Gallery, London  
1989 *Into the Nineties*, Mall Galleries, London

**Dean Whatmuff** (b. 1959)

- 1978-81 Newcastle Polytechnic, BA (Hons)  
1983-85 Slade School of Fine Art  
1984 *New Contemporaries*, Institute of Contemporary Arts, London  
1985 *Prelude*, Kettles Yard, Cambridge  
1987/89 *Whitechapel Open*, Whitechapel Art Gallery, London  
1988 *Riverside Open*, Riverside Studios, London

Other exhibitors include Alain Miller and Christian Williams

# Victor House (SPACE)

282A Richmond Road, London E8  
Telephone: 01-985 5674  
16-17 September/12-7pm

**Peter Abrahams**

- 1978-81 Camberwell School of Art and Crafts, BA (Hons)  
1981-84 Royal Academy Schools  
1985 Solo show, Galeria Propuestas, Asuncion, Paraguay  
1987 Solo show, Hanover Gallery, Liverpool  
1988 Solo show, Creaser Gallery, London  
1989 *Critics Space 5*, Air Gallery, London

**Andrea Finn**

- 1967-70 University of Reading, BA (Hons)  
1987 Group show, University of Surrey, Guildford  
1988 *Art, Artists and Education* touring exhibition  
Open studio, Victor House  
1989 Group show, Vadhera Gallery, New Delhi, India  
*Critics Space 5*, Air Gallery, London

**Karen Gregory** (b. 1951)

- 1969-72 University of East Anglia, BA (Hons)  
1974-77 St. Martin's School of Art, BA (Hons)  
1984-86 History of Somers Town mural, London  
1988 Hoardings mural, Sutton  
*Reflections*, CCA Galleries, London  
*Whitechapel Open*, Whitechapel Art Gallery, London

**Leslie Hakim-Dowek** (b. 1960)

- 1980-83 Camberwell School of Art, BA (Hons)  
1983-85 Slade School of Fine Art  
1987 Greater London Arts Grant  
1988 *Narrative Painting*, Castlefield Gallery, Manchester  
*Air Mail*, Air Gallery, London  
1989 Solo show, Spacex Gallery, Exeter

**Andrew Holligan**

- 1976-78 Portsmouth School of Architecture  
1979-83 Freelance photographer's assistant in London and New York



Karen Gregory (*Victor House*) working on Somers Town mural

- 1984-85 *Street Life in Hackney*, BJP Annual 1986  
1986-87 *Man & Land*, Australia  
1988 Midland Bank project, East Midlands  
1989 Modern Architecture in London project

**Ann-Marie Le Quesne**

- 1969-72 University of Iowa, BA (Hons)  
1976 Solo show, Thumb Gallery, London  
Solo show, Ina Broerse, Amsterdam  
1988 *Time and Time Again*, Grape Lane Gallery, York  
*Private Lives*, Todd Gallery, London  
1989 *Critics Space 5*, Air Gallery, London

**Tony Mott** (b. 1950)

- 1969-72 Goldsmiths' College  
1972-74 Slade School of Fine Art  
1974 Salisbury Award  
1975 Arts Council of Great Britain Award  
1985 *Camden Annual*, Camden Arts Centre, London  
1989 *Critics Space 5*, Air Gallery, London

**Andrew Pepper** (b. 1955)

- Trent Polytechnic, Nottingham  
University of Reading  
1980-82 Museum of Holography, New York  
1988-90 Lionel Robbins Memorial Scholarship  
Solo show, Living and Learning Centre, University of Vermont  
Solo show, Interference Gallery, Toronto

**Suzanne Roles** (b. 1951)

- 1979-84 Camberwell School of Art and Crafts  
1986-87 *The South Bank Picture Show*, Royal Festival Hall, London  
1988 *Art, Artists & Education*, Air Gallery, London and tour  
MoMart Fellowship, Tate Gallery, Liverpool  
1989 *Critics Space 5*, Air Gallery, London

**Rebecca Salter** (b. 1955)

- 1974-77 Bristol Polytechnic
- 1979-81 Kyoto City University of Arts, Japan
- 1983 Cleveland Drawing Biennale award
- 1984/87 Curwen Gallery, London
- 1986-89 *Chicago International Art Exposition*
- 1988 *Six Artists on Paper*, Oxford Gallery

**Suzy Willey**

- 1981-84 Bath Academy of Art, BA (Hons)
- 1985 *Whitechapel Open*, Whitechapel Art Gallery, London
- 1986-88 Goldsmiths' College, MA
- 1987 *Interim Show*, Goldsmiths' College Gallery, London
- 1989 *Summer Show*, Anderson O'Day Gallery, London

**Paul Winstanley**

- 1978 Boise travel scholarship to Egypt
- 1979 Solo show, Riverside Studios, London
- 1980 Whitechapel Art Gallery, London
- 1981 British Council award to exhibit in Belgium  
*Group of Four*, Stavelot, Belgium
- 1987 *Paintings and Drawings*, Watermans Arts Centre, London

Other exhibitors include Ray Brouitt, Chris Dorley-Brown, Diana Hobson, Alexis Hunter, Chris Plytas, Joanna Price, Philip Ruben, S.J. Scullion and Peter Stanley

## Vyner Street Arts

43 Vyner Street, London E8  
29 September-1 October and 6-8 October/  
10.30am-8pm (preview 29 September 6-9pm)

**Javiad Alvi** (b. 1957)

- 1975 Solo show, Essex University
- 1982 *New Contemporaries*, Institute of Contemporary Arts, London
- 1983 Hornsey School of Art, BA (Hons)
- 1986 Royal Academy Schools  
Dutch Government Scholarship
- 1987 Group show, The Square Gallery, London

**Andrew Farrow** (b. 1966)

- 1984-85 Chesterfield College of Technology and Arts
- 1985-88 Norwich School of Art, BA (Hons)
- 1987 Artist in Residence, Fakenham Festival of Music & Arts
- 1987-88 Work reproduced in *The Rialto* poetry magazine  
Location work in Amsterdam, Edinburgh and St. Ives
- 1988 Stage environment for Design Market fashion show, Norwich

**Martin Marshall** (b. 1960)

- 1979-80 Cleveland College of Art and Design
- 1980-83 Winchester School of Art, BA (Hons)
- 1984 Group show, City Artists, London
- 1985 Group show, Pyramid Arts Centre, London
- 1987 Group show, City Artists, London
- 1988 Group show, Cleveland College of Art and Design

**Sarah Pasquali** (b. 1965)

- 1984-85 Chelsea School of Art
- 1985-88 Chelsea School of Art, BA (Hons)
- Published work in *The Nursing Times*

**Fiona White** (b. 1965)

- 1984-85 Buckinghamshire College of Further Education
- 1985-88 Chelsea School of Art, BA (Hons)
- Published work in *The Observer*, *The Nursing Times* and *AOI Magazine*

Other exhibitors include Frances Burden and Tatashi Suzuki

## Vyner Street Studios

23 Vyner Street, London E8  
29 September-1 October and 6-8 October/  
10.30am-8pm (preview 29 September 6-9pm)

**Bonieventure I Bagalue** (b. 1954)

- Hackney Technical College
- Kings College, London, BSc (Hons)
- Member of The Association of Fashion & Editorial Photographers

**Rachel Budd** (b. 1960)

- 1983-86 Royal College of Art, MA
- 1986-87 Picker Fellowship, Kingston Polytechnic, London
- 1987 *The London Group Show*, Royal College of Art, London (Henry Moore Prize)  
*Athena Art Awards*, Barbican Centre, London
- 1988 Mark Rothko Memorial Trust travel bursary

**Laura Hamilton** (b. 1964)

- 1983-84 Byam Shaw Art School
- 1984-87 Kingston Polytechnic, BA (Hons)
- 1988 Open studio, Vyner Street Arts  
*Open Show*, Cafe Gallery, London
- 1989 *Pieces of Eight*, Pyramid Arts Centre, London  
Group show, Chelsea School of Art, London

**Alison Hoynes** (b. 1965)

- 1983-87 University of Newcastle-upon-Tyne, BA (Hons)
- 1985 Group show, Hatton Gallery, Newcastle University
- 1989 Group show, Dance Attic Studios, London

**Alistair Hughes** (b. 1956)

- Epsom School of Art
- Worked 3 years assisting fashion photographers
- 1980 Set up own studio
- Worked in Milan and included in exhibition sponsored by Italian Vogue

**Bridget Jones** (b. 1959)

- 1984 Worked at Vortex Gallery, London
- 1985 Assisted Gilbert & George
- 1986 Started work as a black and white hand printer

**Heidi Jukes** (b. 1963)

- 1985 *Tyne Tees Northern Open*, Laing Gallery, Newcastle  
*Northern Young Contemporaries*, Whitworth Art Gallery, Manchester
- 1985-86 Chelsea School of Art, MA
- 1987 Leicestershire Collection and Exhibition  
*The London Group Exhibition*, Henry Moore Gallery, London
- 1988 Solo show, Diorama Gallery, London

**Nygel Packett** (b. 1963)

- 1983-86 Newcastle Polytechnic, BA (Hons)
- 1986 *Rosebury Group Show*, Newcastle
- 1988 *Here Comes Everybody*, The Young Unknowns Gallery, London  
Open studio, Cromwell Lodge Studios  
Open studio, Vyner Street Arts
- 1989 *Pieces of Eight*, Pyramid Arts Centre, London

## Index of Participating Artists

AS – Angel Studios  
 BAG – Barbican Arts Group  
 BR – Beck Road (ACME)  
 BelS – Belsham Street (SPACE)  
 BerS – Berry Street (SPACE)  
 BW – Britannia Works (SPACE)  
 CabSS – Cable Street Studios  
 CR – Carpenters Road (ACME)  
 ChiSS – Chilton Street Studios  
 CS – Chisenhale Studios  
 DH – Deborah House (SPACE)  
 DS – Delfina Studios  
 LAG – Leyton Artists Group (ACME)  
 MS – Martello Street (SPACE)  
 MW – Metropolitan Wharf  
 MilS – Milborne Street (SPACE)  
 NHW – New Hoxton Workshops  
 NHS – Norfolk House Studios (SPACE)  
 PSS – Pixley Street Studios  
 RCS – Red Cow Studios Cooperative  
 RHS – Richmond House Studios (SPACE)  
 RR – Robinson Road (ACME)  
 U7 – Unit 7  
 VH – Victor House (SPACE)  
 VSA – Vyner Street Arts  
 VSS – Vyner Street Studios

**Abrahams** Peter (VH)  
**Allen** Felicity (DH)  
**Allen** Joe (CabSS)  
**Allen** Julie (BW)  
**Alley** Stephen (CR)  
**Alvi** Javaid (VSA)  
**Amado** Ines (CR)  
**Anderson** Gary (RR)  
**Andrews** Kerry (RR)  
**Archer** (CabSS)  
**Argent** Paul (RR)  
**Arif** Saleem (BW)  
**Attlesley** Mark Gill (AS)  
**Austin** Patricia (CS)  
**Ayling** Brian (CabSS)  
**Bagaloe** Bonaventure I. (VSS)  
**Bailey** Justin (CR)  
**Baird** Phil (NHS)  
**Baker** Catherine (LAG)  
**Baker** Sue (CR)  
**Banahan** Christopher (MW)  
**Banner** Fiona (CR)  
**Barker** Sally (PSS)  
**Barnes** Jonathan (CabSS)  
**Barnes** Lesley (MilS)  
**Barron** David (CabSS)  
**Barton** Julia (LAG)  
**Bates** Roger (MS)  
**Baxter** Mark (U7)  
**Bazaks** Suzie (NHS)  
**Beale** Philippa (BerS)  
**Belcher** Ramona (CabSS)  
**Bengochea** Aurora (NHS)  
**Bennett** Kimberley (MS)

**Bennett** Peter Lloyd (MS)  
**Bennington** Guy (ChiSS)  
**Benson** Amanda (RHS)  
**Berczuk** Philip (CR)  
**Best** Anna (RCS)  
**Betts** Simon (DH)  
**Bickerstaff** David (AS)  
**Bischoff** John (AS)  
**Blackburn** Coral (BAG)  
**Blatton** Slavomir (BerS)  
**Bledowski** Chris (BerS)  
**Blee** Sarah (AS)  
**Blik** Maurice (BW)  
**Blundun** James (CR)  
**Bolton** Nick (CabSS)  
**Bond** Peter (CabSS)  
**Bonnell** Mandy (NHW)  
**Boston** Allan (CR)  
**Boyd** Jane (MS)  
**Bradley** Jon (U7)  
**Bramwell-Jones** Robert (BerS)  
**Breakwell** Ian (BerS)  
**Brewster** Martyn (BW)  
**Britten** Robert (BerS)  
**Brouitt** Ray (VH)  
**Bryan** Sheila (AS)  
**Buckett** Sandra (BW)  
**Buckland** Jean (CR)  
**Buday** Zbigniew (RHS)  
**Budd** Rachel (VSS)  
**Buitrago** Jose (CR)  
**Buller** Stephen (CR)  
**Bunting** Peter (BR)  
**Burnett** Henny (CR)  
**Burns** Charles (CR)  
**Bustin** Jane (CR)  
**Butler** Michael (BerS)  
**Buxton** Joanna (BerS)  
**Buzzard** Colleen (BAG)  
**Callaghan** Zoe (RHS)  
**Carey** Matthew (NHS)  
**Carr** Andrea (RCS)  
**Carson** Fiona (RR)  
**Catlin** Greg (CR)  
**Cattrell** Louise (CabSS)  
**Chadwick** Helen (BR)  
**Channer** Belinda (CabSS)  
**Chell** Edward (CS)  
**Chittock** Christine (LAG)  
**Christophorou** Chris (MS)  
**Clark** Judy (CR)  
**Clark** Sheila (BAG)  
**Clifford** Liz (BAG)  
**Cloudeley-Thompson** Anne (BerS)  
**Clover** Catherine (AS)  
**Cole** Andy (DH)  
**Coles** John (CabSS)  
**Collier** Niki (CR)  
**Constant** Hervé (MS)  
**Cooke** Randal (CR)  
**Copus** Steven (RHS)  
**Corby** Tim (AS)  
**Cordova** Denise de (CR)  
**Cottell** Fran (CS)  
**Coulston** Jane (CabSS)  
**Courtaney** Claire (CabSS)  
**Coutinho** Graça (BerS)  
**Cowan** James (RR)  
**Crawford** Richard (RHS)  
**Crawford** Simon (CabSS)

**Crawley** Martin (MS)  
**Crow** Rebecca (MW)  
**Cuddihy** Mikey (BR)  
**Cunningham** Jane (BAG)  
**Dalton** Lesley (BAG)  
**Darbyshire** Mark (PSS)  
**Davies** Marissa (CabSS)  
**Davis** Ashley (MW)  
**Davis** Kate (CR)  
**Davis** Liz (CR)  
**Deakin** Jane (CabSS)  
**Deedman** Heather (CR)  
**Demetriades** Mario (CabSS)  
**Dewhurst** Antonia (RR)  
**Dix** Harrison (CR)  
**Donnelly** Paul (NHS)  
**Dorley-Brown** Chris (VH)  
**Doswell** Robert (CR)  
**Downman** Jan (CS)  
**Ducker** Richard (RR)  
**Duffin** Debbie (RR)  
**Duncan** Amanda (RCS)  
**Dunkley** James (RHS)  
**Durie** Corinna (ChiSS)  
**Dweck** Lucille (CabSS)  
**Dzieszko** Krystyna (MilS)  
**Edmonds** Frances (CR)  
**Edwards** Barry (BAG)  
**Ellis** Liz (PSS)  
**Elson** Stephen (AS)  
**Embleton** Jane (LAG)  
**Evans** Gethin (CR)  
**Everott** (CabSS)  
**Fairnington** Mark (CS)  
**Farrow** Andrew (VSA)  
**Fassolas** John (MS)  
**Faure Walker** James (MS)  
**Fennick** Barbara (BAG)  
**Finn** Andrea (VH)  
**Flynn** Trevor (BAG)  
**Foster** David (U7)  
**Foulds** Mark (MW)  
**Freake** Nigel (MW)  
**Frome** Debbie (CabSS)  
**Fuller** John (CS)  
**Fuller** Sharon (CR)  
**Gage** Jan (RR)  
**Galler** Nepomuk (CR)  
**Gamble** Susan (BerS)  
**Ganley** Stewart (CabSS)  
**Gardner** Tim (BelS)  
**Garfield** Rachel (BW)  
**Gavin** Ann Menpes (AS)  
**George** Jon (CS)  
**Gibilaro** Jason (CabSS)  
**Gibson** Daniel (CabSS)  
**Gifford** Jane (MilS)  
**Gillatt** Stephen (CabSS)  
 **Girvin** Joy (CS)  
**Gleeson** Tommy (ChiSS)  
**Godfrey Issiacs** Laura (CR)  
**Goldblatt** Susan (BAG)  
**Golush** Priscilla (MilS)  
**Granger** Simon (BW)  
**Grantham** Dominique Ann (AS)  
**Gray** Adam (AS)  
**Greaves** Ashley (PSS)  
**Greaves** Ronald (BerS)  
**Green** Paul (BW)  
**Greene** Michael (NHS)  
**Gregory** Karen (VH)

**Grey** Marcus (CR)  
**Griffiths** David (CR)  
**Gryn** David (CR)  
**Guest** John (CS)  
**Gunningham** Emma (CS)  
**Gurney** Nick (RCS)  
**Guy** Alexander (DS)  
**Haddon** Margaret (CabSS)  
**Hakim-Dowek** Leslie (VH)  
**Hall** John (CabSS)  
**Hall** Sharon (CS)  
**Hamilton** David (BR)  
**Hamilton** Laura (VSS)  
**Hamley** Fiona (RR)  
**Hardcastle** Alan (CabSS)  
**Harper** Alison (AS)  
**Harper** Sara Jane (RCS)  
**Harris** Ron (PSS)  
**Harris** Teri-Jane (AS)  
**Harrison** Andrea (CabSS)  
**Harrison** Kevin (CS)  
**Hatt** Jonathan (PSS)  
**Hatton** Rosamonde (BAG)  
**Haughney** Paula (CR)  
**Hawkes** Jennifer (LAG)  
**Heide** Bè van de (BerS)  
**Hemming** Adrian (AS)  
**Hempstead** Michael (CR)  
**Hepworth** Stephen (CR)  
**Heron** Susanna (BW)  
**Hetherington** Guy (MilS)  
**Higgins** Tim (CR)  
**Hill** Shareena (CR)  
**Hirst** Karen (CabSS)  
**Hirst** Nicky (AS)  
**Hobson** Diana (VH)  
**Hodge** Wendy (CabSS)  
**Hodgeson** Len (CabSS)  
**Hodgetts** Philip (NHS)  
**Holligan** Andrew (VH)  
**Hooker** Sarah (ChiSS)  
**Hooper** John (CR)  
**Horton** Sophie (NHS)  
**Howard** Philip (PSS)  
**Hoynes** Alison (VSS)  
**Hughes** Alistair (VSS)  
**Hugo** David (DS)  
**Hull** Anthony (CR)  
**Hunter** Alexis (VH)  
**Hunter** Alyson (BerS)  
**Hutchinson** Louisa (CabSS)  
**Hyman** Timothy (BAG)  
**Imhof** Pierre (CS)  
**Irvin** Magnus (BAG)  
**Jack** Jim (RHS)  
**Jackson** Deanna (BerS)  
**James** Lisa (BerS)  
**Jamieson** Maggie (MS)  
**Jeffries** Charlie (CR)  
**Jenkinson** Audrey (BerS)  
**Jennings** Maggie (BW)  
**Jian** Jun Xi (DS)  
**Johns** Annie (DH)  
**Johnson** Charlie (CS)  
**Johnson** David (CR)  
**Johnson** Pete (MS)  
**Johnson** Vanessa (PSS)  
**Joiner** Ben (RR)  
**Jones** Alison (MS)  
**Jones** Bridget (VSS)  
**Jones** Clifton (RCS)

**Jones** Dennis (MS)  
**Jones** Ian (BW)  
**Jones** Justin (DS)  
**Jones** Lucy (CR)  
**Jones** Malcolm (CS)  
**Jones** Michael (CR)  
**Joseph** Tam (BW)  
**Joy** Clair (DH)  
**Judge** James (CabSS)  
**Jukes** Heidi (VSS)  
**Julyan** Alex (RR)  
**Katayama** Yumi (RHS)  
**Keane** John (BerS)  
**Kelly** Sofia (PSS)  
**Kerma** Ingrid (CS)  
**Kerr** Bernadette (MW)  
**Kilby** Ray (CabSS)  
**King** Dave (RR)  
**Kinjo** Hiroshi (CR)  
**Kirby** Hilary (RR)  
**Kite** Roger (CR)  
**Knight** Sophie (CabSS)  
**Koenig** Robert (NHS)  
**Kool** Halbo (MS)  
**Kowalsky** Elaine (RR)  
**Kravitz** Roberta (RHS)  
**Kudic** Smiljana (AS)  
**La Nave** Francesca (CabSS)  
**Laird** Thalia (BerS)  
**Large** Valerie (LAG)  
**Lasalle** Patrick (MilS)  
**Lawler** Putrisha (CabSS)  
**Le Quesne** Ann-Marie (VH)  
**Leo** (AS)  
**Lestas** Elli (U7)  
**Lewis** Garth (RHS)  
**Lewis** Pete (CS)  
**Lewsey** Richard (CabSS)  
**Liddell** Peter (BerS)  
**Liddell** Siobhan (BelS)  
**Lisbon** Heather (BW)  
**List** Caroline (AS)  
**Livey** Di (CS)  
**Lockett** D. H. (PSS)  
**Loon** Philippa Van (AS)  
**Lorriman** Richard (CabSS)  
**Ludlow** Janet (RR)  
**Lynch** Michael (CabSS)  
**MacArthur** Duncan (PSS)  
**Macaulay** Ian (CabSS)  
**MacCarthy** Katharine (CR)  
**Machin** Penny (CS)  
**MacLaurin** Kay (RR)  
**MacLean** Mary (AS)  
**Madden** Jo (DH)  
**Mahon** Phyllis (BR)  
**Manthey** Priscilla (RHS)  
**Marshall** Martin (VSA)  
**Martin** Diane (CS)  
**Mathieson** Mary (CabSS)  
**Maughling** Gavin (LAG)  
**McCallan** Tina (MW)  
**McCartin** Mandy (MS)  
**McCourt** Jane (AS)  
**McGreevy** Rose Ann (CR)  
**McHarg** Gordon (CabSS)  
**McLaren** Louise (CS)  
**Merriman** Elisabeth (CabSS)  
**Michie** Anne (U7)  
**Miles** David (CabSS)  
**Miller** Alain (U7)

**Miller** Neil (AS)  
**Milne** Robert (CabSS)  
**Milne** Vincent (CS)  
**Mitchell** Beth (PSS)  
**Monchaux** Cathy de (U7)  
**Monchaux** Elizabeth de (BR)  
**Montague** Lucille (BAG)  
**Moodie** Susan (MilS)  
**Moore** Sally (DS)  
**Morey de Morand** Colette (BerS)  
**Morley** Simon (CabSS)  
**Morrison** Jim (MS)  
**Mossman** Anna (U7)  
**Mott** Tony (VH)  
**Mullaniff** Kathleen (CS)  
**Murry** Elizabeth (CR)  
**Mylius** Jules (RCS)  
**Naylor** Colin (MW)  
**Naylor** Stephen (RR)  
**Neville** Alison (BerS)  
**New Hoxton Ceramics** (NHW)  
**New North Press** (NHW)  
**Nicholas** Simon (BelS)  
**Nicol** Brian (RHS)  
**Noble** Paul (PSS)  
**Norton** Paul (BW)  
**Nowers** (CabSS)  
**Oates** David (CR)  
**Ocean** Humphry (CabSS)  
**O'Connell** Eilis (DS)  
**O'Driscoll** Suzanne (BerS)  
**O'Dwyer** James (ChiSS)  
**O'Neill** Nigel (CS)  
**Orofino** Vincenza (CS)  
**Osborne** Ian (PSS)  
**Ostier** Jane (BelS)  
**Owen** Janet (CabSS)  
**Packett** Nygel (VSS)  
**Palmier** Clare (RCS)  
**Park** Anna (ChiSS)  
**Parker** Bill (CR)  
**Parker** Sarah (AS)  
**Passingham** Keith (RR)  
**Paupers Press** (NHW)  
**Pennell** Jacqueline (CR)  
**Pepper** Andrew (VH)  
**Perritt** Sarah (CabSS)  
**Perry-Wells** Marianne (CabSS)  
**Petrie** Julian (CR)  
**Philbrick** Harry (BerS)  
**Pickering** Roy (BW)  
**Pinkerton** Austen (NHS)  
**Plank** Richard (RHS)  
**Plant** Mary (BerS)  
**Plowman** John (U7)  
**Plytas** Chris (VH)  
**Polak** Jenny (DH)  
**Porter** Sandra (BR)  
**Potkins** Gillian (CR)  
**Poulton** Ian (CabSS)  
**Price** Coffin (MS)  
**Price** Joanna (VH)  
**Prowse** Amanda (CabSS)  
**Purins** Simon (MW)  
**Purnell** Chris (PSS)  
**Purves** Catherine (CR)  
**Quesnel** Francis (BR)  
**Quinnell** (CabSS)  
**Ravella** Ramo (ChiSS)  
**Rawcliffe** Tessa (PSS)  
**Read** Robert (MS)

**Read** Shirley (MS)  
**Reeves** Rachael (MW)  
**Reford** Kitty (MilS)  
**Rego** Paula (BerS)  
**Reid** Stuart (CS)  
**Revell** Graham (MilS)  
**Riches** Ivan (MW)  
**Roberts** Matthew (AS)  
**Roberts** Perry (BerS)  
**Robertson** Carol (RR)  
**Roff** Mike (CR)  
**Roles** Suzanne (VH)  
**Ronke** Anita (CR)  
**Ronkko** Marja-Leena von (BR)  
**Rosen** Hilary (CS)  
**Rosenberg** Terence (BAG)  
**Rosenbloom** Paul (CR)  
**Rosenthal** James (DH)  
**Ross** Lucy (DS)  
**Rowe** Kevin (PSS)  
**Rowson** Andrew (CabSS)  
**Ruben** Philip (VH)  
**Rubinstein** Gerda (NHS)  
**Rushton** Mark (MS)  
**Rushton** Steve (LAG)  
**Russell** Caroline (DH)  
**Russell** Robert (MS)  
**Ryan** David (BelS)  
**Ryder** Andrew (BerS)  
**Rylands** A.J. (NHS)  
**Sadotti** Giorgio (CabSS)  
**Salter** Rebecca (VH)  
**Sayers** Katy (AS)  
**Scanlon** Claire (U7)  
**Schioppati** Erminio (NHS)  
**Scott** Rebecca (DH)  
**Scullion** S.J. (VH)  
**Sellers** Diana (MilS)  
**Sexton** John (BAG)  
**Shamash** Jessica (DH)  
**Shaw** Michael (NHS)  
**Shearer** Trevor (BR)  
**Shennan** John (MilS)  
**Shepherd** Katy (AS)  
**Skinner** Alistair (CR)  
**Smailes** Lesley (MW)  
**Smith** Andrew (CR)  
**Smith** Colin (CR)  
**Smith** Dillwyn (BAG)  
**Smith** Donald (CR)  
**Smith** Kate (RR)  
**Smith** Lance (MW)  
**Smith** Lou (NHS)  
**Smith** Maggie (CabSS)  
**Smith** Peter (BR)  
**Smith** Rosemary (CR)  
**Smithson** Pete (CR)  
**Smykla** Harald (PSS)  
**Snelling** Nicholas (BW)  
**Soloway** Louise (ChiSS)  
**Stahl** Andrew (CR)  
**Staite** Jackie (CabSS)  
**Staite** Paul (CabSS)  
**Stanley** Peter (VH)  
**Stempel** Tatiana de (CabSS)  
**Stevens** Sally (BAG)  
**Stevens** Christopher (DH)  
**Stewart** Andy (MW)  
**Stiff** Andrew (CR)  
**Stockam** Jo (CS)  
**Stok** William (BAG/LAG)

**Strindberg** Madeleine (CS)  
**Stubbs** Michael (MW)  
**Sullivan** Lawrence (CR)  
**Sutton** Margaret (CR)  
**Suwendcho** Piyawan (CabSS)  
**Svar** (BR)  
**Swarbrick** John (MS)  
**Swift** Richard (CS)  
**Sydney** Helen (BR)  
**Symons** Judith (BW)  
**Szenassy** Sandor (CabSS)  
**Talbot** Robert (PSS)  
**Tassie** Nicola (NHW)  
**Taylor** Adrian (MW)  
**Taylor** Michael (NHW)  
**Thomas** Deb (CR)  
**Thomas** Shanti (BAG)  
**Thompson** Debbie (BerS)  
**Threadfell** Victoria (NHS)  
**Tockwell** Anne (BW)  
**Tod** Janet (CR)  
**Toren** Amikam (CS)  
**Torr** Andrew (CabSS)  
**Tricorne Publications** (NHW)  
**Tuck** Pippa (NHS)  
**Turley** Arthur (CabSS)  
**Turnbull** Alison (BR)  
**Turner** Dinny (CR)  
**Tyrrell** Barbara (MW)  
**Umerle** Julie (CR)  
**Vannozi** Deborah (CabSS)  
**Vass** Catherine (RCS)  
**Vitamin B12** (MW)  
**Wadley** Caroline (LAG)  
**Wahlwender** Mark (CabSS)  
**Wainwright** Mark (BAG)  
**Walker** Paul (VH)  
**Walker** Rick (CabSS)  
**Wallace** André (CR)  
**Wallace** Anne (BR)  
**Waller** Jonathan (CR)  
**Walter** Jo (CabSS)  
**Watson** Christine (MS)  
**Weihmuller** Ivel (CabSS)  
**Weiler** Carl von (MS)  
**Weinberg** Ruth (BW)  
**West** Robert (CR)  
**Whalley** Stella (CR)  
**Whatmuff** Dean (U7)  
**Whishaw** Anthony (RR)  
**White** Sharon (RR)  
**Whitehead** Rhonda (BerS)  
**Whitread** Rachel (CR)  
**Whitman** Rosalind (BerS)  
**Willey** Suzy (VH)  
**Williams** Christian (U7)  
**Williams** Jane (CR)  
**Williams** Julian (BerS)  
**Williams** Michael (DH)  
**Williams** Vee (CR)  
**Windle** Michael (CR)  
**Winstanley** Paul (VH)  
**Winter** Rachel (CabSS)  
**Winterson** Lucie (CabSS)  
**Wise** Richard (RR)  
**Withers** Emma (BW)  
**Wood** Brian (BW)  
**Wood** Jacqueline (CabSS)  
**Wooding** Lisa (PSS)  
**Yhip** Elaine (PSS)  
**Yocum** Frederick (BW)

The Whitechapel Art Gallery opened in 1901 and is administered by a charitable trust. The trust has no endowment and the Gallery's existence and programme therefore depend wholly on financial assistance given by national and local authorities, companies (through sponsorship and donations), foundations, trusts and individuals. In 1984, the Whitechapel Art Gallery Foundation was established to stimulate support from the business community and charitable sector.

The Whitechapel gratefully acknowledges the financial assistance which it has been receiving from:

Arts Council of Great Britain  
Greater London Arts  
London Borough of Tower Hamlets  
London Docklands Development Corporation  
London Boroughs Grants Scheme  
Inner London Education Authority

#### **Foundations and Trusts**

Adeby Charitable Trust  
Aldgate and Allhallows, Barking Exhibition Foundation  
The Charterhouse Charitable Trust  
The Chase Charity  
City of London Polytechnic  
Cripplegate Foundation  
Draper's Company  
The Henry Moore Foundation  
Mercer's Company  
Ruskin's Guild of St. George  
Sir John Cass's Foundation  
Visiting Arts

#### **Sponsors**

Bankers Trust Company  
Barclays Bank plc.  
British Petroleum Company plc.  
CBS Music Video Enterprises  
Citicorp/Citibank  
Jamdani, Charlotte Street  
Midland Bank  
Montblanc  
Stanhope Properties plc.  
Unilever

#### **Donors**

Arthur Anderson & Co.  
Banca Commerciale Italiana  
Bovis Construction Ltd.  
British Airways  
British Gypsum Ltd.  
British Telecom  
Conder Group plc.  
Davis Langdon & Everest  
Gardiner Theobald  
Granada Group plc.  
Healy & Baker  
Herbert Smith  
Industrial Acoustics Company Ltd.  
Invest Limited  
John Laing Construction Limited  
McKenna & Co.  
Mercury International Group plc.  
Ove Arup Partnership  
The Peninsular & Oriental Steam Navigation Company  
Roy Properties Ltd.  
Save & Prosper Group

Sir Robert McAlpine & Sons Ltd.  
Sir Robert & Lady Sainsbury  
Mr Harold Schiff  
Trusthouse Forte plc.  
Virgin Communications Ltd.  
Waddington Galleries Ltd.  
Wolff Olins

#### **Corporate Patrons**

Arthur Anderson & Co. Foundation  
Blackburn Associates Ltd.  
Blackwall Green Ltd.  
Botts and Company Ltd.  
Cable and Wireless plc.  
Citicorp/Citibank  
City Acre Property Investment Trust  
Continental Bank  
Credit Suisse First Boston Ltd.  
Deutsche Bank AG London Branch  
Drexel Burnham Lambert  
Eagle Star  
Euromoney  
Fischer Fine Art Ltd.  
Fletcher King  
Friends Provident  
Granada Group plc.  
Grand Metropolitan Brewing Ltd.  
Hanover Acceptances  
Henry Ansbacher & Co. Ltd.  
House of Fraser plc.  
IBM United Kingdom Trust  
John Crowther Group plc.  
Jones Lang Wootton  
London & Edinburgh Trust plc.  
The Members of Lloyd's & Lloyd's Brokers  
Midland Bank  
JP Morgan  
Morgan Stanley International  
National Investment Group plc.  
National Westminster Bank plc.  
Nomura Bank International plc.  
Oppenheimer Charitable Trust  
Pearson plc.  
Pirelli UK  
Queen Mary College  
Romulus Construction Ltd.  
SJ Crowley Ltd.  
Saatchi & Saatchi Company plc.  
Salomon Brothers International Ltd.  
Save & Prosper Group  
Sedgwick Group plc.  
Sheppard Robson  
Sheraton Securities plc.  
Sotheby's  
Steggles Palmer  
Sun Life Assurance Society plc.  
Taylor Woodrow Group  
Thames Television plc.  
Trafalgar House plc.  
Waddington Galleries Ltd.  
Williams Lea & Co. Ltd.  
Grand Metropolitan Brewing Ltd.

#### **Corporate Associates**

Alex Reid & Lefevre Ltd.  
Annely Juda Fine Art  
Anthony d'Offay Gallery  
The Bank of England  
BET plc.  
Charrington & Company  
Christie, Manson & Woods Ltd.  
Coutts & Co.  
Deloitte, Haskins & Sells  
Edward Totah Gallery  
The Fine Art Society  
Friends Provident Life Office  
Galerie Maeght Lelong, New York  
Goldman Sachs International Corp  
Intercom Data Systems  
The International Stock Exchange  
Knoedler Kasmin Ltd.  
Lisson Gallery London Ltd.  
Marlborough Fine Art (London) Ltd.  
Mayor Gallery Ltd.  
Mayor Rowan Gallery  
Morgan Grenfell & Co. Ltd.  
MoMart Ltd.  
Nicola Jacobs Gallery  
Peat Marwick McLintock  
The Rank Organisation plc.  
Robert Fleming Holdings Ltd.  
Royal Life Holdings Ltd.  
SG Warburg & Co. Ltd.  
Singer & Friedlander Ltd.  
Thames and Hudson Ltd.  
Victoria Miro Gallery, London



### **Education Programme**

Full details of the Gallery's education programme relating to the Open and to the Open Studios are given in the September-October newsheet

Bus tours between the Whitechapel Art Gallery and East End Open Studios are sponsored by MoMart Ltd

### **Whitechapel Art Gallery**

Whitechapel High Street

London E1 7QX

Tel: 01-377 0107 (information) 01-377 5015 (administration)

Opening Hours: Tuesday-Sunday 11 am-5 pm

Wednesday 11 am-8 pm Closed Monday

Underground: Aldgate East

## WHITECHAPEL

Designed by Kate Stephens

Printed by Taylor Brothers, Bristol

Published by the Trustees of the Whitechapel Art Gallery © 1989